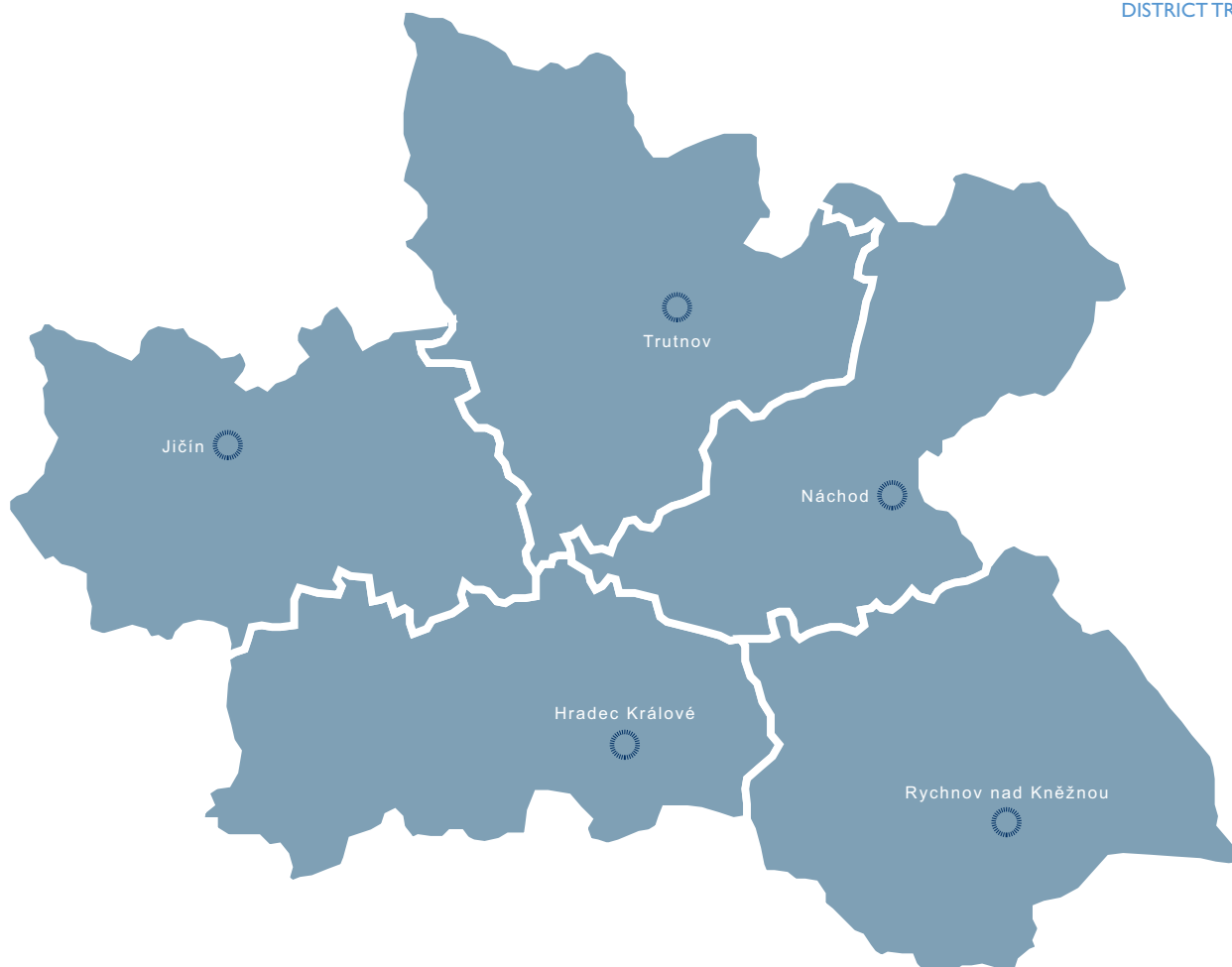


HRADEC KRÁLOVÉ REGION

DISTRICT HRADEC KRÁLOVÉ
 DISTRICT JIČÍN
 DISTRICT NÁCHOD
 DISTRICT RYCHNOV NAD KNĚŽNOU
 DISTRICT TRUTNOV



ABOUT REGION

The Hradec Králové Region is located in Eastern Bohemia. It is neighboring Pardubice, Central Bohemia and the Liberec Region, and it shares a long part of its boundary with Poland. It is divided among five regions: Hradec Králové, Jičín, Náchod, Rychnov nad Kněžnou and Trutnov.

The region's area is 4,758 km² which is about 6 percent of national territory. Hradec Králové is the 9th largest region in the country. - As of H1 2009 the population of the Hradec Kralove Region was 554,379, about 5.3 % of the Czech Republic population, 10th place among regions. There are 448 communities in the Hradec Králové Region (7.2 % of all Czech Republic communities).

Hradec Králové is the regional capital with a population of 94,255. The region has 22 towns with populations exceeding 5,000. Krkonošský národní park (National Park Krkonoše) is the most important preserved territory in this region. Protected areas in Jizerské hory, Český ráj and Broumovsko are also rather popular among tourists. There is no landmark belonging to the list of UNESCO in the region, although Kuks castle grounds with adjacent Betlém are getting very near to being qualified.

Urban sanctuaries are in the downtowns of Hradec Králové, Jičín, Nové Město nad Metují; other sanctuaries can be found in the fortress Josefov and in Kuks. Hrádek u Nechanic, Chlumeck nad Cidlinou, Ratibořice, Ná-

chod or Opočno are the most frequented castles in the region. Another of its tourist highlights is the Safari Zoo in Dvůr Králové. The region occupies a prominent place in tourism statistics.

There are quite a number of universities and colleges in the region. Hradec Králové University (UHK) with two colleges (Pedagogical College and Informatics and Management College) is seated in the region. There are also two colleges of Charles University Prague in Hradec Králové – Medicine and Pharmacy. There is also a military healthcare college of the University of Defense located in the city.

Region Hradec Králové is a rather important area in farming. The automotive and rubber industries are among the largest employers here. Many people work in the textile industry, as well. Two industry clusters focused on packing technologies and stone working have been created in the region.

The potential of the region is in intensive farming along the Labe River and the fields of contemporary medicine and pharmacy are well developed. There is a sufficient quantity of persons with academic erudition suitable for key local lines of business. The motorway to Prague is being finished, there are many landmarks attractive for tourists, parts of the territory are suitable for winter sports and there is a great capacity for accommodation.

BASIC DATA

Land Area	4,758 km ²
-----------	-----------------------

ACTUAL SITUATION ON LABOUR MARKET

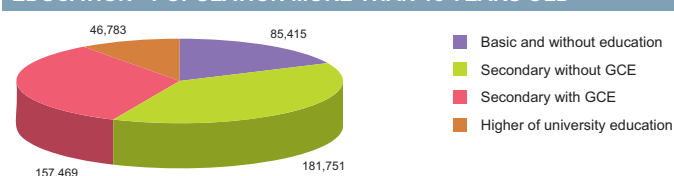
Population	554,379
Percentage in the total population of Czech Republic (%)	5.3
Population density (person/km ²)	116.5
Workforce	291,168
Number of job seekers	19,446
Unemployment rate (%)	6.5

Source: Czech Statistical Office, Ministry of Labour and Social Affairs

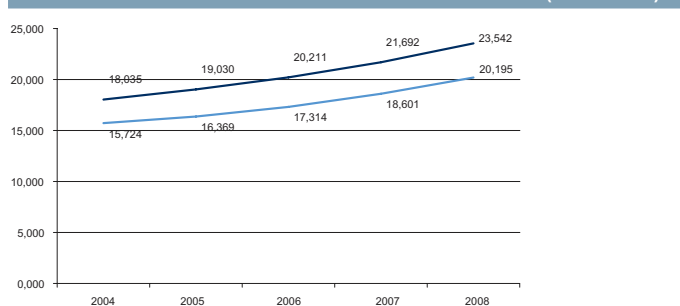
NUMBER OF ECONOMIC UNITS ACCORDING TO PREVAILING ACTIVITY

Total	130,544
Industry	18,119
Construction	16,220
Agriculture & forestry	10,530
Services	85,039

Source: Czech Statistical Office

EDUCATION - POPULATION MORE THAN 15 YEARS OLD


Source: Czech Statistical Office

AVERAGE GROSS MONTHLY WAGES - 5 YEAR TREND (CZK/YEAR)


Source: Czech Statistical Office

GDP BY REGIONS

Region	TOTAL		Per capita	
	mIn. CZK	mIn. EUR	Total CZK	Total EUR
Hradec Králové	160 462	6 433	291 472	10 497
Average GDP for Czech regions	252 161	10 110	341 989	13 711
Share in GDP of the Czech Republic	5%			

Source: Czech Statistical Office

ADMINISTRATIVE BREAKDOWN

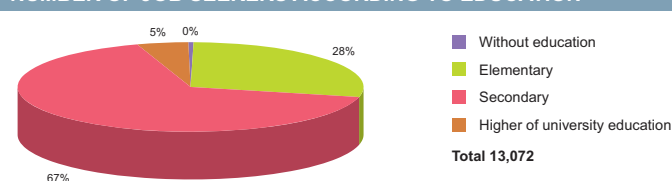
Number of districts	5
Number of municipalities	448
of that, number of towns	48

Source: Czech Statistical Office

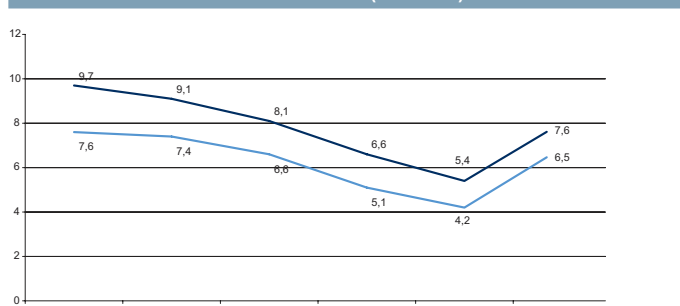
NUMBER OF EMPLOYEES AND GROSS MONTHLY WAGES IN MANUFACTURING ACCORDING TO NACE CLASSIFICATION

	Number of employees	Wages (EUR)
Manufacturing	45,878	828
Man. of food products, beverages and tobacco products	3,364	723
Man. of chemical, chemical products, pharmaceuticals, and chemical fibres	862	824
Man. of rubber and plastic products	4,720	743
Man. of basic metals and fabricated metal products	6,703	924
Man. and repairs of machinery and equipment	5,839	914
Man. of electrical and optical equipment	9,675	836
Man. of transport equipment	3,520	868

Source: Czech Statistical Office

NUMBER OF JOB SEEKERS ACCORDING TO EDUCATION


Source: Ministry of Labour and Social Affairs

UNEMPLOYMENT - 5 YEAR TREND (%/YEAR)


Source: Czech Statistical Office

FOREIGN DIRECT INVESTMENT

Region	FDI (CZK)	FDI (EUR)
min.	17 940 192	673 937
Hradec Králové	29 982 310	1 126 308
max.	1 049 062 899	39 408 824
Average	145 150 799	5 452 697

Source: Czech National Bank

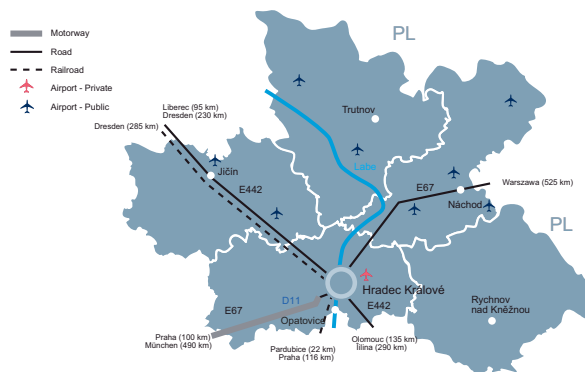
AVERAGE GROSS MONTHLY WAGES - 5 YEAR TREND

Year	2004		2005		2006		2007		2008	
	CZK	EUR	CZK	EUR	CZK	EUR	CZK	EUR	CZK	EUR
Hradec Králové	15,724	493	16,369	550	17,314	611	18,601	670	20,195	810
Average for Czech Republic	18,035	565	19,030	639	20,211	713	21,692	781	23,542	944

Source: Czech Statistical Office

	Specification		
	Public/Private	Civil/Military/Varied	International/Intranational
Broumov	Public	Civil	Intranational
Dvůr Králové nad Labem	Public	Civil	Intranational
Hořice	Public	Civil	Intranational
Hradec Králové	Private	Civil	International
Jaroměř	Public	Civil	Intranational
Jičín	Public	Civil	Intranational
Nové Město	Public	Civil	Intranational
Velké Poříčí	Public	Civil	Intranational
Vrchlabí	Public	Civil	Intranational

Source: Ministry of Transport, Aerobaze.cz



SCHOOL SYSTEM			
	Number of schools	Number of students	Number of graduates
Secondary schools			
Technical fields	n/a	9 030	2 178
Economic fields	n/a	7 281	1 764
ICT fields	n/a	3 160	707
Higher schools			
Technical fields	n/a	186	64
Economic fields	n/a	311	96
ICT fields	n/a	n/a	n/a
Universities			
Technical fields	1	87	17
Economic fields	1	919	164
ICT fields	1	1 493	208

Source: Institute for Information on Education, 2009

LABOUR OFFICE				
City	Address	Phone	Fax	E-mail
Hradec Králové	Wonkova 1142/1, 500 02 Hradec Králové 2	495 868 111	950 116 302	podatelna.up@hk.mpsv.cz
Jičín	Havlíčkova 56, 506 01 Jičín 1	493 580 249	493 532 259	posta@jc.mpsv.cz
Náchod	Kladská 1092, 547 01 Náchod 1	491 449 111	491 426 195	nachod.up@na.mpsv.cz
Rychnov nad Kněžnou	Štemberkova 1433, 516 01 Rychnov nad Kněžnou	950 1 59 111	494 534 496	posta.up@rk.mpsv.cz
Trutnov	Horská 5, 541 01 Trutnov 1	950 168 111	950 168 381	podatelna@tu.mpsv.cz

Source: Ministry of Labour and Social Affairs

SELECTED CZECHINVEST PROJECTS IN THE REGION					
Name	Location	Investor	Country	Sector	Year
AEG Componenets s.r.o.	Jičín	AEG	Germany	electronics, electrotechnics	1998
Alcan Packaging Skřivany s.r.o.	Nový Bydžov - Zábědov	Finnciére Europeenne D'emballages Pechiney S.A.	France	plastics, rubber	2007
Continental Teves Czech Republic, s.r.o.	Jičín	Continental Teves	Germany	manufacture of motor vehicles	2000
Dietfurt s.r.o.	Dvůr Králové nad Labem	Dietfurt	Italy	other	2007
JUTA a.s.	Dvůr Králové	JUTA	Czech Republic	plastics, rubber	2007
Kimberly-Clark, a.s.	Jaroměř	Kimberly Clark	USA	other	2001
Kingspan a.s.	Ploučov, Piletice	Kingspan Group plc	Ireland	other	2007
RONAL CR s.r.o.	Jičín, Pardubice	Ronal	Switzerland	manufacture of motor vehicles	2000
Saar Gummi Czech s.r.o.	Náchod	Saar Gummi	Germany	plastics, rubber	2000
SAINT-GOBAIN ORSILA s.r.o.	Rychnov nad Kněžnou	Orsil	Austria	other	1999
SQS Vláknová optika a.s.	Nová Paka	SQS Vláknová optika	Czech Republic	electronics, electrotechnics	2006
ŠKODA AUTO a.s.	Kvasiny, Mladá Boleslav	VOLKSWAGEN	Germany	manufacture of motor vehicles	2004
Škoda Auto a.s.	Kvasiny	Škoda Auto - SUV Kvasiny	Netherlands	manufacture of motor vehicles	2007
Wíkov MGI a.s.	Zbečnik	Wíkov MGI	Czech Republic	other	2007

Source: CzechInvest

IMPORTANT COMPANIES IN THE REGION ACCORDING TO TURNOVER							
Name of company	Location	Employees	Activity (Sector)	Turnover	Phone	E-mail	WWW
Continental Teves Czech Republic, s.r.o.	Jičín - Valdické Předměstí	1000 - 1499	Manufacture of parts and accessories for motor vehicles and their engines	10 471	493 589 135, 493 589 602	info.jicin@contiteves.cz	www.contiteves.com, www.contiteves.cz
Esab Vamberk, s.r.o.	Vamberk	n/a	Wire drawing	5 493	494 501 407, 494 501 435	obchod.marketing@esab.cz	www.esab.cz
Hradecká lesní a dřevařská společnost,	Hradec Králové	50 - 99	Wholesale of wood, construction materials and sanitary equipment	5 307	495 771 111, 495 516 049	info@hlds.cz	www.hlds.cz
Tyco Electronics EC Trutnov s. r. o.	Trutnov	1000 - 1499	Manufacture of electricity distribution and control apparatus	3 427	499 865 200, 499 865 610	job.trutnov@tycoelectronics.com	www.tycoelectronics-trutnov.cz, www.tycoelectronics.com
Nypro - hutní prodej, a.s.	Malé Svatoňovice	50 - 99	Wholesale of metals and metal ores	3 234	499 829 314, 499 829 311	info@nyprohutni.cz	www.nyprohutni.cz
Ammann Czech Republic, a.s.	Nové Město nad Metují	n/a	Manufacture of machinery for mining, quarrying and construction	2 869	494 590 002, 491 542 824	info@ammann-group.cz	www.ammann-group.cz, www.stavostroj.cz
Rubena a. s.	Hradec Králové - Věkoše	2000 - 2499	Manufacture of other rubber products	2 689	495 753 111, 491 447 564	rubena@rubena.cgs.cz	www.cgs.cz, www.rubena.cz
VČP Net, s.r.o.	Hradec Králové - Kukleny	25 - 49	Distribution and trade of gaseous fuels through mains	2 380	495 060 110, 495 060 000	info@rwe-vcvpcz.cz	www.rwe-vcvpcz.cz
Impress, a.s.	Skřivany	250 - 499	Manufacture of light metal packaging	2 336	495 019 111, 495 019 209		www.impressgroup.com
BAK, a.s.	Trutnov - Střední Předměstí	500 - 999	General construction of buildings and civil engineering works	2 303	499 800 111, 603 567 019	bak@bak.sk, bak.gr@bak.cz	www.bak.cz
Karsit, s. r. o.	Jaroměř - Jakubské Předměstí	500 - 999	Manufacture of parts and accessories for motor vehicles and their engines	1 841	491 845 142, 499 320 225	karsit@karsit.cz	www.karsit.cz, www.k-triumf.cz
Marius Pedersen, a.s.	Hradec Králové	250 - 499	Collection and treatment of other waste	1 786	495 500 550, 495 500 536	mpostrava@mariuspetersen.cz	www.mariuspetersen.cz
Cerea, a. s.	Hradec Králové 2	100 - 199	Manufacture of prepared feeds for farm animals	1 753	494 949 111, 494 949 112	cerea@cerea.cz	www.cerea.cz
Ametek elektromotory, s.r.o.	Náchod	250 - 499	Manufacture of electric motors, generators and transformers	1 641	491 433 115, 491 423 877		www.ametek.com
Saar Gummi Czech, s.r.o.	Červený Kostelec - Stolín	500 - 999	Manufacture of other rubber products	1 618	491 467 490, 491 467 411	sgc@sgc.cz	www.sgc.cz
Mlecoop východočeská divize - družstvo	Hradec Králové - Slezské Předměstí	10 - 19	Wholesale of dairy produce, eggs and edible oils and fats	1 581	495 546 690	brabec@mlecoop-hk.cz	www.mlecoop-hk.cz
FAB, s.r.o.	Rychnov nad Kněžnou	500 - 999	Manufacture of locks and hinges	1 527	494 532 054, 494 511 237	fab.rk@fab.cz	www.fab.cz
Východočeská plynárenská, a.s.	Hradec Králové - Kukleny	250 - 499	Distribution and trade of gaseous fuels through mains	1500 mil. a více	495 060 111, 495 060 427	info@rwe-vcvpcz.cz	www.rwe-vcvpcz.cz
Tomáš Brandejs- Planas	Hradec Králové - Třebeš	n/a	Manufacture of tools	1500 mil. a více	495 262 199		
Siemens Nizkonapěťová spínací technika	Trutnov - Horní Předměstí	250 - 499	Manufacture of electricity distribution and control apparatus	1500 mil. a více	499 903 509, 499 903 111	info.snst@siemens.com	www.siemens.cz

Source: Albertina Company Monitor

LIST OF UNIVERSITIES 2009				
Name of school	WWW	Orientation	Titles awarded	Students
Univerzita Hradec Králové	www.uhk.cz	Variety of programmes	Bc., Mgr., Ing., Ph.D.	8 291

Source: Institute for Information on Education

KNOWLEDGE OF FOREIGN LANGUAGES			
LANGUAGE	ALL SKILLS LEVEL (%)	LANGUAGE	ALL SKILLS LEVEL (%)
English	72.6	Spanish	8.8
German	44.2	Polish	15.9
French	23.9	Russian	46.0
Italian	4.4	Nordic languages	0.9

Source: Augur Consulting

RENTS IN INDUSTRIAL PREMISES IN CR REGIONS (EUR/sqm/month)

Hradec Králové Region	3,5-4,0
Note 1: Net effective rents for units ca 4,000 sq m which is average deal size in the market	
Note 2: Premises are immediately available only some regions.	

Source: CB Richard Ellis

PRIME RENTS IN SHOPPING CENTRES (EUR/sqm/month)

Hradec Králové Region	30-40
Note: for units ca 100 sqm.	

Source: CB Richard Ellis

**INDUSTRIAL PARKS IN THE CZECH REPUBLIC**

Project	Region	City/ Town	Total Area (warehouse + office)	Year of Completion
VGP Park Hradec Králové	Hradec Králové	Hradec Králové	24 007	2008-2009

Source: CB Richard Ellis

SELECTED INDUSTRIAL ZONES IN THE HRADEC KRÁLOVÉ REGION

Industrial zone	Area (ha)
Česká Skalice	13,80
Dvůr Králové - Zboží	12,00
Hradec Králové - Northern Zone	12,09
Jičín	29,17
Jičín - zóna I.	34,00
Jičín - zóna II.	25,30
Kopidlno	87,07
Nový Bydžov - Zábědov	34,20
Opočno - Podzámčí I, II	34,30
Solnice - Kvasiny	53,43
Trutnov - PZ Krkonošská	22,56
Vrchlabí - Jih	12,50

Source: CzechInvest

IMPORTANT CONTACTS IN THE REGION**Regional Council**

Regiocentrum Nový pivovar, Pivovarské náměstí
1245, 500 03 Hradec Králové
tel.: 495 817 111
fax: 495 817 336
Email: posta@kr-kralovehradecky.cz
URL: epodatejna.kr-kralovehradecky.cz,
www.kr-kralovehradecky.cz

City Hall - Hradec Králové

Regiocentrum Nový pivovar
Československé armády 408/51
50200 Hradec Králové
tel.: 495 707 111, 495 751 111 (Ulrichovo nám. 810)
fax: 495 707 100
Email: posta@mmhk.cz
URL: www.hradeckralove.org

CzechInvest - Regional Office

Regiocentrum Nový pivovar
Soukenická 54/8, 500 03 Hradec Králové
tel.: 495 817 711
fax: 495 817 710
Email: hradeckralove@czechinvest.org
Contact persons: Mgr. Martina Chamasová,
Mgr. Michal Turecek

Regional Development Agency - CEP

Regiocentrum Nový pivovar, Soukenická 54/8,
500 03 Hradec Králové
tel.: 495 817 802
fax: 495 817 848
Email: info@cep-rra.cz
URL: www.euro-glacensis.cz

Regional Consulting & Information Center - Profit Real, a.s.

Holubova 978, 547 01 Náchod
tel.: 491 420 046
fax: 491 422 012
Email: info@profitreal.cz
URL: www.profitreal.cz
Contact persons: Mgr. Martin Těr, Mgr. Petr Hrnka

CzechTrade - Regional Information Place - Hradec Králové

Škroupova 957, 500 02 Hradec Králové
tel.: 495 581 960, 724 613 801
Email: peter.lukac@czechtrade.cz
Contact person: Peter Lukáč

Regional Economic Chamber of the North-East

Bohemia
Škroupova 957, 500 02 Hradec Králové
tel: 495 530 569, 495 521 603
fax: 495 516 056
Email: info@rhkhradec.cz
URL: www.rhkhradec.cz
Contact person: František Molík

UTILITIES**GAS**

Východočeská plynárenská, a.s.
Pražská třída 485, 500 04 Hradec Králové
tel.: 495 060 110
fax: 495 532 909
Email: info@rve-vcp.cz
URL: www.vcp.cz

ELECTRICITY

ČEZ, a.s.
Riegrovo náměstí 1493, 501 03 Hradec Králové
tel.: 840 840 840
fax: 495 842 198
Email: cez@cez.cz
URL: www.cez.cz

WATER AND SEWER SYSTEM

Vodovody a kanalizace Hradec Králové, a.s.
Víta Nejedlého 893, 500 03 Hradec Králové
tel.: 495 715 111
fax: 495 715 239
Email: vakhk@vakhk.cz
URL: www.vakhk.cz

Vodovody a kanalizace Náchod, a.s.

Kladská 1521, 547 01 Náchod
tel.: 491 419 200
fax: 491 419 267
Email: manager@vakna.cz
URL: www.vakna.cz

HEAT

Teplné hospodářství Meziměstí, s.r.o.
5. května 1, 549 81 Meziměstí
tel.: 491 582 393
Tepl Jaroměř, spol. s r.o.
Husova 112, 551 01 Jaroměř-Pražské Předměstí
tel.: 491 810 774

Tepl Krkonoše, a.s.

Labská 964, 543 01 Vrchlabí
tel.: 604 311 347
fax: 499 421 144
Email: teplo.krkonoše@centrum.cz
URL: www.teplokrkonoše.cz



DISTRICT HRADEC KRÁLOVÉ

BASIC DATA	
Land Area	876 km ²

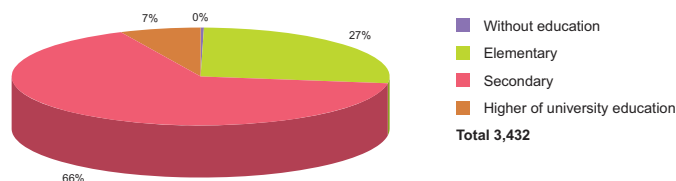
TOWNS WITH POPULATION OVER 5,000			
Hradec Králové	94,252	Třebechovice nad Orebem	5,870
Nový Bydžov	7,167	Chlumeck nad Cidlinou	5,353

Source: Czech Statistical Office

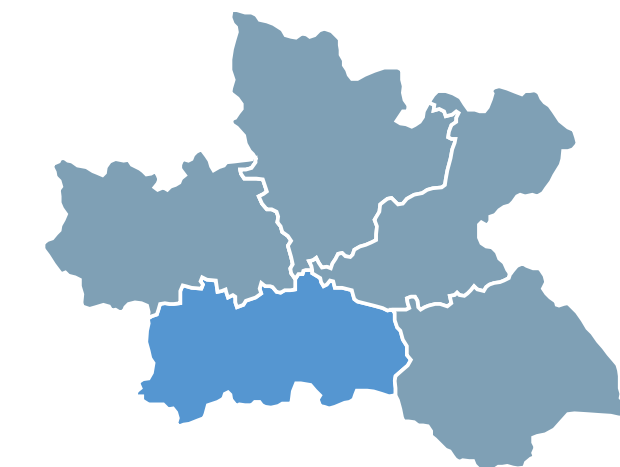
ACTUAL SITUATION ON LABOUR MARKET	
Population	162,319
Percentage in the total population of Czech Republic (%)	29.3
Population density (person/km ²)	185.3
Workforce	88,481
Number of job seekers	4,488
Unemployment rate (%)	4.8

Source: Czech Statistical Office, Ministry of Labour and Social Affairs

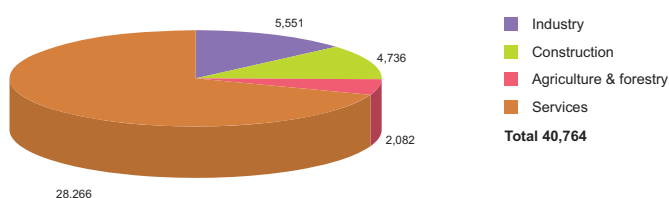
NUMBER OF JOB SEEKERS ACCORDING TO EDUCATION



Source: Ministry of Labour and Social Affairs

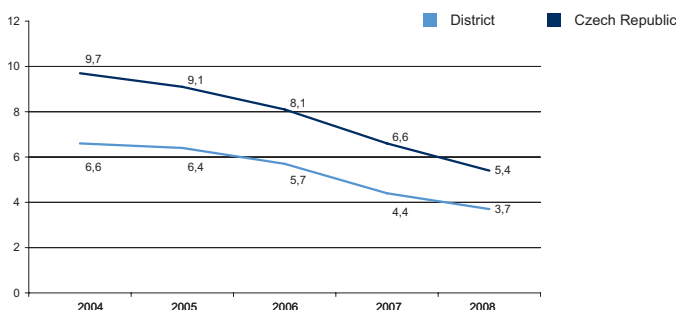


NUMBER OF ECONOMIC UNITS ACCORDING TO PREVAILING ACTIVITY



Source: Czech Statistical Office

UNEMPLOYMENT - 5 YEAR TREND (%/YEAR)



Source: Czech Statistical Office

FOREIGN DIRECT INVESTMENT

	FDI (CZK)	FDI (EUR)
Hradec Králové	9 337 170	350 758
CR (total)	2 032 111 185	76 337 761
Prague	1 049 062 899	39 408 824
Hradec Kralove Average	5 996 462	225 262

Source: Czech National Bank

IMPORTANT COMPANIES IN THE DISTRICT ACCORDING TO TURNOVER

Name of company	Location	Employees	Activity (Sector)	Turnover	www
Hradecká lesní a dřevařská společnost,	Hradec Králové	50 - 99	Wholesale of wood, construction materials and sanitary equipment	5 307	www.hlds.cz
Rubena a. s.	Hradec Králové - Věkoše	2000 - 2499	Manufacture of other rubber products	2 689	www.rubena.cz
VČP Net, s.r.o.	Hradec Králové - Kukleny	25 - 49	Distribution and trade of gaseous fuels through mains	2 380	www.rwe-vcnet.cz
Impress, a.s.	Skřivany	250 - 499	Manufacture of light metal packaging	2 336	www.impressgroup.com
Marius Pedersen, a.s.	Hradec Králové	250 - 499	Collection and treatment of other waste	1 786	www.mariuspedersen.cz
Cerea, a. s.	Hradec Králové 2	100 - 199	Manufacture of prepared feeds for farm animals	1 753	www.cerea.cz
Mlecoop východočeská divize - družstvo	Hradec Králové	10 - 19	Wholesale of dairy produce, eggs and edible oils and fats	1 581	www.mlecoop-hk.cz
Východočeská plynárenská, a.s.	Hradec Králové - Kukleny	250 - 499	Distribution and trade of gaseous fuels through mains	1500 mil. and more	www.rwe-vcpcz
Tomáš Brandejs- Planas	Hradec Králové - Třebeš	n/a	Manufacture of tools	1500 mil. and more	
Lesy České republiky, s.p.	Nový Hradec Králové	3000 - 3999	Logging	1500 mil. and more	www.lesy-cr.cz
Kingspan, a.s.	Hradec Králové - Pouchov	100 - 199	Manufacture of metal structures and parts of structures	1500 mil. and more	www.kingspan.cz
Jiří Drbal- Autodoprava	Hradec Králové	10 - 19	Freight transport by road	1500 mil. and more	
Jaroslava Řihová	Nový Bydžov	1 - 5	Business and management consultancy activities	1500 mil. and more	
Ing. Martin Divišek, s.r.o.	Chlumeck nad Cidlinou II	25 - 49	Wholesale of solid, liquid and gaseous fuels and related products	1500 mil. and more	www.divisek.cz
ČEZ Měření, s.r.o.	Hradec Králové	1000 - 1499	Manuf. of instruments and appliances for measuring, checking, testing	1500 mil. and more	www.cezmereni.cz
Arrow International CR, a.s.	Hradec Králové - Plačice	500 - 999	Manufacture of medical and surgical equipment and orthopaedic appliances	1 210	www.arrow.cz
Bühler Motor, s.r.o.	Hradec Králové - Pouchov	250 - 499	Manufacture of electrical equipment for engines and vehicles n.e.c.	1 183	
AB Petrol, s.r.o., v likvidaci	Smidary	n/a	Retail sale in non-specialized stores	1 096	
Quelle, s.r.o.	Hradec Králové	250 - 499	Retail sale via mail order houses	1000 - 1499 mil.	www.quelle.cz
Technistone, a.s.	Hradec Králové	200 - 249	Manufacture of concrete products for construction purposes	863	www.technistone.cz

DISTRICT JIČÍN



BASIC DATA

Land Area	887 km ²
-----------	---------------------

TOWNS WITH POPULATION OVER 5,000

Jičín	16,448
Nová Paka	9,272
Hořice	9,227

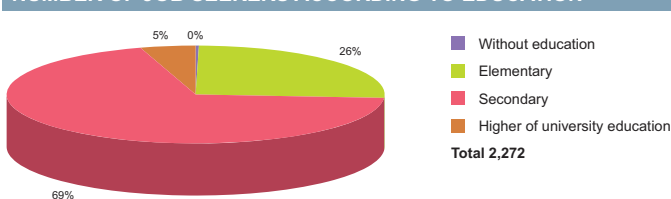
Source: Czech Statistical Office

ACTUAL SITUATION ON LABOUR MARKET

Population	79,533
Percentage in the total population of Czech Republic (%)	14.3
Population density (person/km ²)	89.7
Workforce	41,781
Number of job seekers	3,288
Unemployment rate (%)	7.8

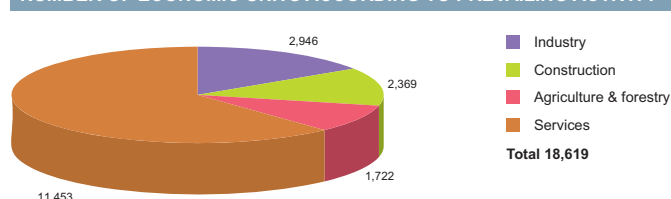
Source: Czech Statistical Office, Ministry of Labour and Social Affairs

NUMBER OF JOB SEEKERS ACCORDING TO EDUCATION



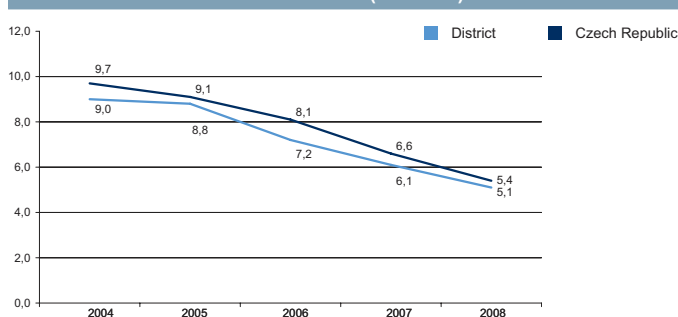
Source: Ministry of Labour and Social Affairs

NUMBER OF ECONOMIC UNITS ACCORDING TO PREVAILING ACTIVITY



Source: Czech Statistical Office

UNEMPLOYMENT - 5 YEAR TREND (%/YEAR)



Source: Czech Statistical Office

FOREIGN DIRECT INVESTMENT

	FDI (CZK)	FDI (EUR)
Jičín	7 663 058	287 868
CR (total)	2 032 111 185	76 337 761
Prague	1 049 062 899	39 408 824
Hradec Kralove Average	5 996 462	225 262

Source: Czech National Bank

IMPORTANT COMPANIES IN THE DISTRICT ACCORDING TO TURNOVER

Name of company	Location	Employees	Activity (Sector)	Turnover	www
Continental Teves Czech Republic, s.r.o.	Jičín - Valdické Předměstí	1000 - 1499	Manufacture of parts and accessories for motor vehicles and their engines	10 471	www.contiteves.com
Ronal CR, s.r.o.	Jičín - Valdické Předměstí	500 - 999	Casting of light metals	1500 mil. and more	www.ronal.cz
C.S.Cargo, a.s.	Jičín - Valdické Předměstí	500 - 999	Activities of other transport agencies	1500 mil. and more	www.cscargo.cz
Jednota, spotřební družstvo Nová Paka	Nová Paka	250 - 499	Retail sale in non-specialized stores with food, beverages or tobacco	606	www.jednotanp.com
Lactalis KS, s.r.o.	Dřevénice 1	1 - 5	Operation of dairies and cheese making	598	
ProScan, a.s.	Jičín - Valdické Předměstí	50 - 99	Sale of motor vehicles	595	www.proscan.cz
Sklopísek Střešič, a. s.	Újezd pod Troskami	50 - 99	Quarrying of glass and foundry sands	583	www.sklopisek.cz
Mileta, a.s.	Hořice	500 - 999	Cotton-type weaving	500 - 999 mil.	www.mileta.cz
Masokombinát Jičín, s.r.o.	Jičín - Valdické Předměstí	200 - 249	Production and preserving of meat	500 - 999 mil.	www.masojicin.cz
AEG components, a.s.	Jičín - Valdické Předměstí	250 - 499	Manufacture of electronic valves and tubes and other electronic components	500 - 999 mil.	www.aeg-components.cz
Fabio Produkt, s.r.o.	Jičín	20 - 24	Other wholesale	413	www.fabioprodukt.cz
SpofaDental, a.s.	Jičín - Holinské Předměstí	250 - 499	Manufacture of other chemical substances	385	www.spofadental.cz
Silnice Jičín, a.s.	Jičín - Valdické Předměstí	100 - 199	Construction of motorways, roads, airfields and sport facilities	325	www.silnicejic.cz
Agro Chomutice, a.s.	Chomutice	100 - 199	Growing of crops combined with farming of animals (mixed farming)	312	
PFT, s.r.o.	Jičín - Holinské Předměstí	100 - 199	Manufacture of builders' ware of plastic	307	www.pft.cz
Y k - Sped, s.r.o.	Jičín - Valdické Předměstí	100 - 199	Freight transport by road	304	
Regina, a.s.	Jičín - Valdické Předměstí	25 - 49	Maintenance and repair of motor vehicles	300 - 499 mil.	www.autoregina.cz
HP Next, s.r.o.	Miletín	1 - 5	Business and management consultancy activities	300 - 499 mil.	
Garland distributor, s.r.o.	Jičín	20 - 24	Other wholesale	300	www.garland.cz
Alucon, s.r.o.	Lázně Bělohrad	100 - 199	Manufacture of locks and hinges	300 - 499 mil.	www.alucon.cz

Source: Albertina Company Monitor



DISTRICT NÁCHOD

BASIC DATA

Land Area	852 km ²
-----------	---------------------

TOWNS WITH POPULATION OVER 5,000

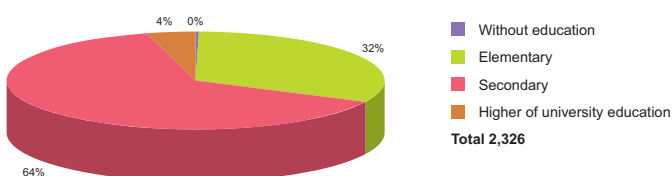
Náchod	20,898	Broumov	8,064
Jaroměř	12,814	Hronov	6,438
Nové Město nad Metují	9,996	Česká Skalice	5,417
Červený Kostelec	8,462		

ACTUAL SITUATION ON LABOUR MARKET

Population	112,575
Percentage in the total population of Czech Republic (%)	20.3
Population density (person/km ²)	
Workforce	56,596
Number of job seekers	3,852
Unemployment rate (%)	6.5

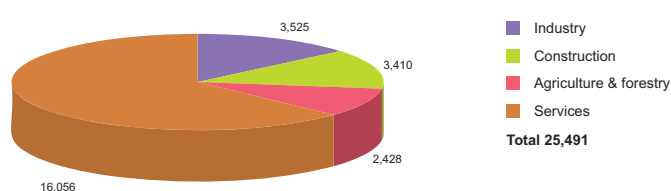
Source: Czech Statistical Office, Ministry of Labour and Social Affairs

NUMBER OF JOB SEEKERS ACCORDING TO EDUCATION



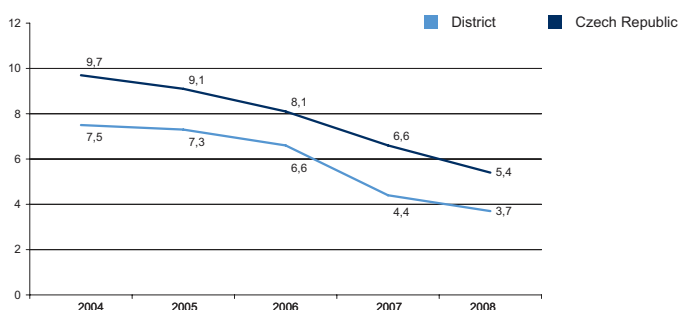
Source: Ministry of Labour and Social Affairs

NUMBER OF ECONOMIC UNITS ACCORDING TO PREVAILING ACTIVITY



Source: Czech Statistical Office

UNEMPLOYMENT - 5 YEAR TREND (%/YEAR)



Source: Czech Statistical Office

FOREIGN DIRECT INVESTMENT

	FDI (CZK)	FDI (EUR)
Náchod	3 945 799	148 227
CR (total)	2 032 111 185	76 337 761
Prague	1 049 062 899	39 408 824
Hradec Kralove Average	5 996 462	225 262

Source: Czech National Bank

IMPORTANT COMPANIES IN THE DISTRICT ACCORDING TO TURNOVER

Name of company	Location	Employees	Activity (Sector)	Turnover	www
Ammann Czech Republic, a.s.	Nové Město nad Metují	n/a	Manufacture of machinery for mining, quarrying and construction	2 869	www.ammann-group.cz
Karsit, s. r. o.	Jaroměř - Jakubské Předměstí	500 - 999	Manufacture of parts and accessories for motor vehicles and their engines	1 841	www.karsit.cz
Ametek elektromotory, s.r.o.	Náchod	250 - 499	Manufacture of electric motors, generators and transformers	1 641	www.ametek.com
Saar Gummi Czech, s.r.o.	Červený Kostelec - Stolin	500 - 999	Manufacture of other rubber products	1 618	www.sgc.cz
Saurer Czech Republic, s.r.o.	Červený Kostelec	500 - 999	Manufacture of machinery for textile, apparel and leather production	1500 mil. and more	www.schlaforst.com
Miloslav Culek ing. CM	Dolany	n/a	Other retail sale of new goods in specialized stores	1500 mil. and more	
Jaromír Matouš-M Centrum	Jaroměř - Josefov	10 - 19	Activities auxiliary to insurance and pension funding	1500 mil. and more	www.m-centrum.cz
Jan Laštovička	Zábrodí - Končiny	1 - 5	Installation of electrical wiring and fittings	1500 mil. and more	
Agro CS, a.s.	Říkov	100 - 199	Extraction and agglomeration of peat	1 405	www.agrocs.cz
Sněžka, výrobní družstvo Náchod	Náchod - Staré Město nad Metují	500 - 999	Manufacture of chairs and seats	1 221	www.snezka-na.cz
Nutricia Deva, a.s.	Nové Město nad Metují	100 - 199	Manufacture of homogenized food preparations and dietetic food	1 016	www.deva.cz
Veba, textilní závody, a.s.	Broumov - Velká Ves	1000 - 1499	Cotton-type weaving	1000 - 1499 mil.	www.veba.cz
Agrotip - Široký, s.r.o.	Dolní Radechová	n/a	Other wholesale	1000 - 1499 mil.	www.agrotipsiroky.cz
Wikov MGI, a.s.	Hronov - Zbečnick	250 - 499	Manufacture of bearings, gears, gearing and driving elements	786	www.wikov.cz
Farmet, a.s.	Česká Skalice - Malá Skalice	200 - 249	Freight transport by road	581	www.farmet.cz
Solar, spol., s.r.o.	Jaroměř - Jakubské Předměstí	25 - 49	Wholesale of metals and metal ores	577	www.solar-sro.cz
Verner Potravinny, s.r.o.	Nové Město nad Metují	200 - 249	Retail sale in non-specialized stores with food, beverages or tobacco predominating	524	www.poverner.cz
KSK Bono, s.r.o.	Heřmanice nad Labem	250 - 499	Manufacture of prepared pet foods	514	www.kskbono.cz
Pekárny a cukrárny Náchod, a.s.	Náchod	500 - 999	Manufacture of bread; manufacture of fresh pastry goods and cakes	510	www.pekarnynachod.cz
Kamat, s.r.o.	Nové Město nad Metují - Krčín	50 - 99	Other wholesale	506	www.kamat.cz

DISTRICT RYCHNOV NAD KNĚŽNOU



BASIC DATA	
Land Area	998 km ²

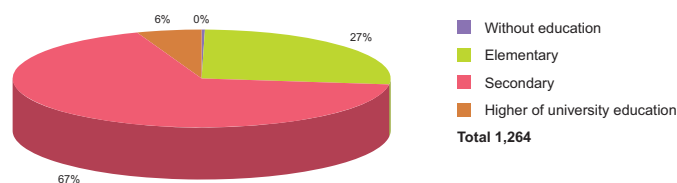
TOWNS WITH POPULATION OVER 5,000			
Rychnov nad Kněžnou	11,587	Týniště nad Orlicí	6,316
Dobruška	6,971	Kostelec nad Orlicí	6,220

Source: Czech Statistical Office

ACTUAL SITUATION ON LABOUR MARKET	
Population	79,200
Percentage in the total population of Czech Republic (%)	14.3
Population density (person/km ²)	79.4
Workforce	39,740
Number of job seekers	2,427
Unemployment rate (%)	6.0

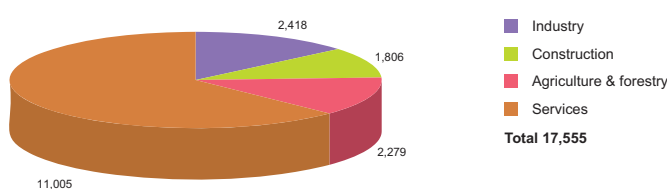
Source: Czech Statistical Office, Ministry of Labour and Social Affairs

NUMBER OF JOB SEEKERS ACCORDING TO EDUCATION



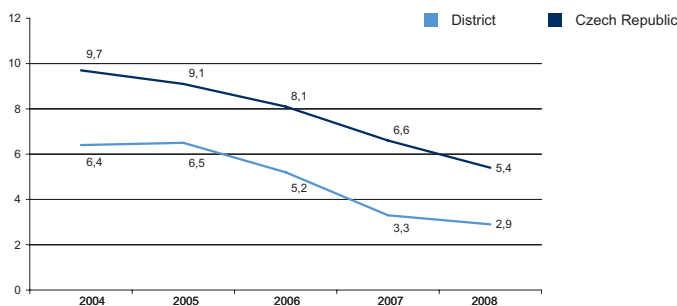
Source: Ministry of Labour and Social Affairs

NUMBER OF ECONOMIC UNITS ACCORDING TO PREVAILING ACTIVITY



Source: Czech Statistical Office

UNEMPLOYMENT - 5 YEAR TREND (%/YEAR)



Source: Czech Statistical Office

FOREIGN DIRECT INVESTMENT

	FDI (CZK)	FDI (EUR)
Rychnov nad Kněžnou	5 172 244	194 299
CR (total)	2 032 111 185	76 337 761
Prague	1 049 062 899	39 408 824
Hradec Kralove Average	5 996 462	225 262

Source: Czech National Bank

IMPORTANT COMPANIES IN THE DISTRICT ACCORDING TO TURNOVER

Name of company	Location	Employees	Activity (Sector)	Turnover	www
Esab Vamberk, s.r.o.	Vamberk	n/a	Wire drawing	5 493	www.esab.cz
FAB, s.r.o.	Rychnov nad Kněžnou	500 - 999	Manufacture of locks and hinges	1 527	www.fab.cz
Saint - gobain Orsil, s.r.o.	Častolovice	250 - 499	Manufacture of other non-metallic mineral products n.e.c.	1500 mil. and more	www.isover.cz
Jiří Vencl	Kostelec nad Orlicí	10 - 19	Freight transport by road	1500 mil. and more	www.drevohracky.cz
Federal - Mogul Friction Products, a.s.	Kostelec nad Orlicí	500 - 999	Manufacture of other non-metallic mineral products n.e.c.	1500 mil. and more	www.federal-mogul.cz
KBA - Grafitec, s.r.o.	Dobruška	250 - 499	Manufacture of machinery and equipment for printing, stitching and book binding	1 315	www.kba-grafitec.cz
HDB, s.r.o.	Vamberk	25 - 49	Wholesale of solid, liquid and gaseous fuels and related products	970	
Matrix, a.s.	Třebešov	100 - 199	Manufacture of builders' carpentry and joinery	580	
Pewag, s.r.o.	Vamberk	200 - 249	Other wholesale	566	www.pewag.cz
Serafin Campestrini, s.r.o.	Borohrádek	n/a	Manufacture of builders' carpentry and joinery	500 - 999 mil.	www.secac.cz
Proma CZ, s.r.o.	Dobruška - Mělčany	50 - 99	Wholesale of hardware, plumbing and heating equipment and supplies	500 - 999 mil.	www.promacz.cz
Otčenásek s. r. o.	Týniště nad Orlicí	20 - 24	Wholesale of wood, construction materials and sanitary equipment	500 - 999 mil.	www.otcenasek.cz
Bohemilk, a.s.	Opočno	n/a	Manufacture of dairy products	500 - 999 mil.	www.bohemilk.cz
Charvát, a.s.	Doudleby nad Orlicí	100 - 199	Manufacture of paper and paperboard	403	www.charvat.cz
Mlékařské odbytové družstvo Podorlicko	Rychnov nad Kněžnou	1 - 5	Wholesale of dairy produce, eggs and edible oils and fats	378	www.mlecoop.cz
Lesní společnost Hradec Králové, a.s.	Borohrádek	200 - 249	Forestry and logging related service activities	361	
Stuha, a.s.	Dobruška	100 - 199	Manufacture of ribbons and trimmings	331	www.stuha.cz
TTV spedice, s.r.o.	Rychnov nad Kněžnou	50 - 99	Freight transport by road	300 - 499 mil.	
Rojek dřevoobráběcí stroje, a.s.	Častolovice	100 - 199	Freight transport by road	300 - 499 mil.	www.rojek.cz
PZP Komplet, a.s.	Semechnice	100 - 199	Manufacture of electricity distribution and control apparatus	300 - 499 mil.	www.pzp.cz



DISTRICT TRUTNOV

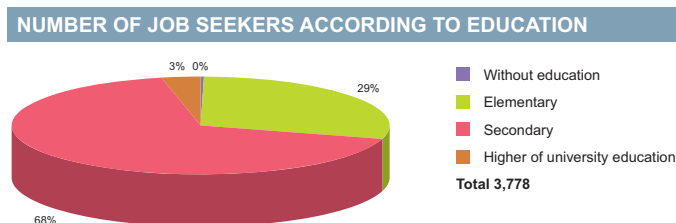
BASIC DATA	
Land Area	1,147 km ²

TOWNS WITH POPULATION OVER 5,000			
Trutnov	30,993	Vrchlabí	13,056
Dvůr Králové nad Labem	16,191	Úpice	5,978

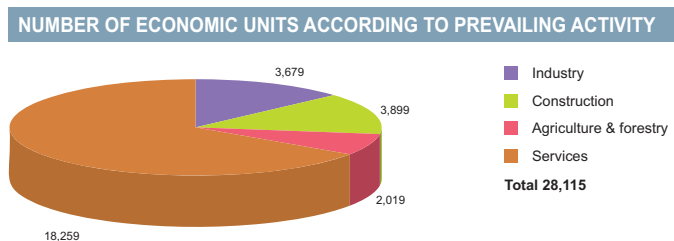
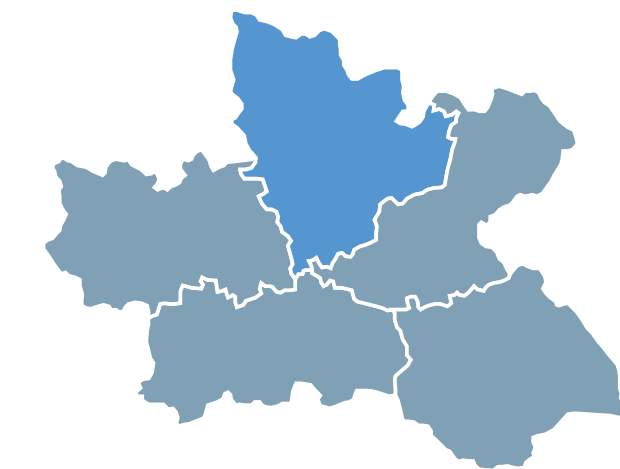
Source: Czech Statistical Office

ACTUAL SITUATION ON LABOUR MARKET	
Population	120,752
Percentage in the total population of Czech Republic (%)	21.8
Population density (person/km ²)	105.3
Workforce	64,570
Number of job seekers	5,392
Unemployment rate (%)	8.2

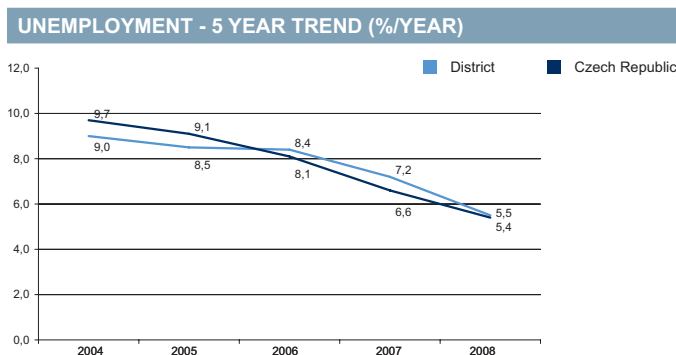
Source: Czech Statistical Office, Ministry of Labour and Social Affairs



Source: Ministry of Labour and Social Affairs



Source: Czech Statistical Office



Source: Czech Statistical Office

FOREIGN DIRECT INVESTMENT

	FDI (CZK)	FDI (EUR)
Trutnov	3 864 038	145 155
CR (total)	2 032 111 185	76 337 761
Prague	1 049 062 899	39 408 824
Hradec Kralove Average	5 996 462	225 262

Source: Czech National Bank

IMPORTANT COMPANIES IN THE DISTRICT ACCORDING TO TURNOVER

Name of company	Location	Employees	Activity (Sector)	Turnover	www
Tyco Electronics EC Trutnov s. r. o.	Trutnov	1000 - 1499	Manufacture of electricity distribution and control apparatus	3 427	www.tycoelectronics.com
Nypro - hutní prodej, a.s.	Malé Svatoňovice	50 - 99	Wholesale of metals and metal ores	3 234	www.nyprohutni.cz
BAK, a.s.	Trutnov - Střední Předměstí	500 - 999	General construction of buildings and civil engineering works	2 303	www.bak.cz
Siemens Nízkonapěťová spínací technika	Trutnov - Horní Předměstí	250 - 499	Manufacture of electricity distribution and control apparatus	1500 mil. and more	www.siemens.cz
Nkt cables Vrchlabí k.s.	Vrchlabí	n/a	Manufacture of insulated wire and cable	1500 mil. and more	www.kabloelektro.cz
KRKONOŠSKÉ PAPIŘNY a.s.	Hostinné	500 - 999	Manufacture of paper and paperboard	1500 mil. and more	www.krpa.cz
Juta, a.s.	Dvůr Králové nad Labem	1500 - 1999	Weaving of jute-type textiles	1500 mil. and more	www.juta.cz
Takata - Petri Parts, s.r.o.	Dolní Kalná	250 - 499	Manufacture of parts and accessories for motor vehicles and their engines	1000 - 1499 mil.	
Martin Černík	Hořejší Vrchlabí	n/a	Other wholesale	1000 - 1499 mil.	
ARGO-HYTOS s.r.o.	Vrchlabí	250 - 499	Manufacture of pumps and compressors	1000 - 1499 mil.	www.argo-hytos.com
Avon Automotive, a.s.	Rudník	250 - 499	Manufacture of other rubber products	932	www.avonauto.com
Prime Hide, s.r.o.	Trutnov - Poříčí 3	10 - 19	Tanning and dressing of leather	811	www.primehide.com
HAVEX - auto, s.r.o.	Vrchlabí	n/a	Freight transport by road	598	www.havex.cz
Spol. vlast. čp. 470,471,472, ulice	Trutnov - Střední Předměstí	n/a	Letting of own property	572	
Stavebniny Nypro, a.s.	Trutnov - Horní Předměstí	50 - 99	Wholesale of wood, construction materials and sanitary equipment	514	www.nypro.cz
Ofin Car, s.r.o.	Trutnov - Horní Předměstí	50 - 99	Real estate agencies	503	www.ofincar.cz
Tessitura Montí Cekia, s.r.o.	Borovnice	250 - 499	Textile weaving	500 - 999 mil.	www.monticekia.cz
Krkonošské vápenky Kunčice, a.s.	Kunčice nad Labem	200 - 249	Manufacture of mortars	542	www.kvk.cz
D+D stavební, s.r.o.	Vrchlabí	20 - 24	Building of complete constructions or parts thereof; civil engineering	479	www.ddstavebni.cz
Mdexx Magnetronic Devices, s.r.o.	Trutnov - Poříčí	200 - 249	Manufacture of electric motors, generators and transformers	473	

Source: Albertina Company Monitor