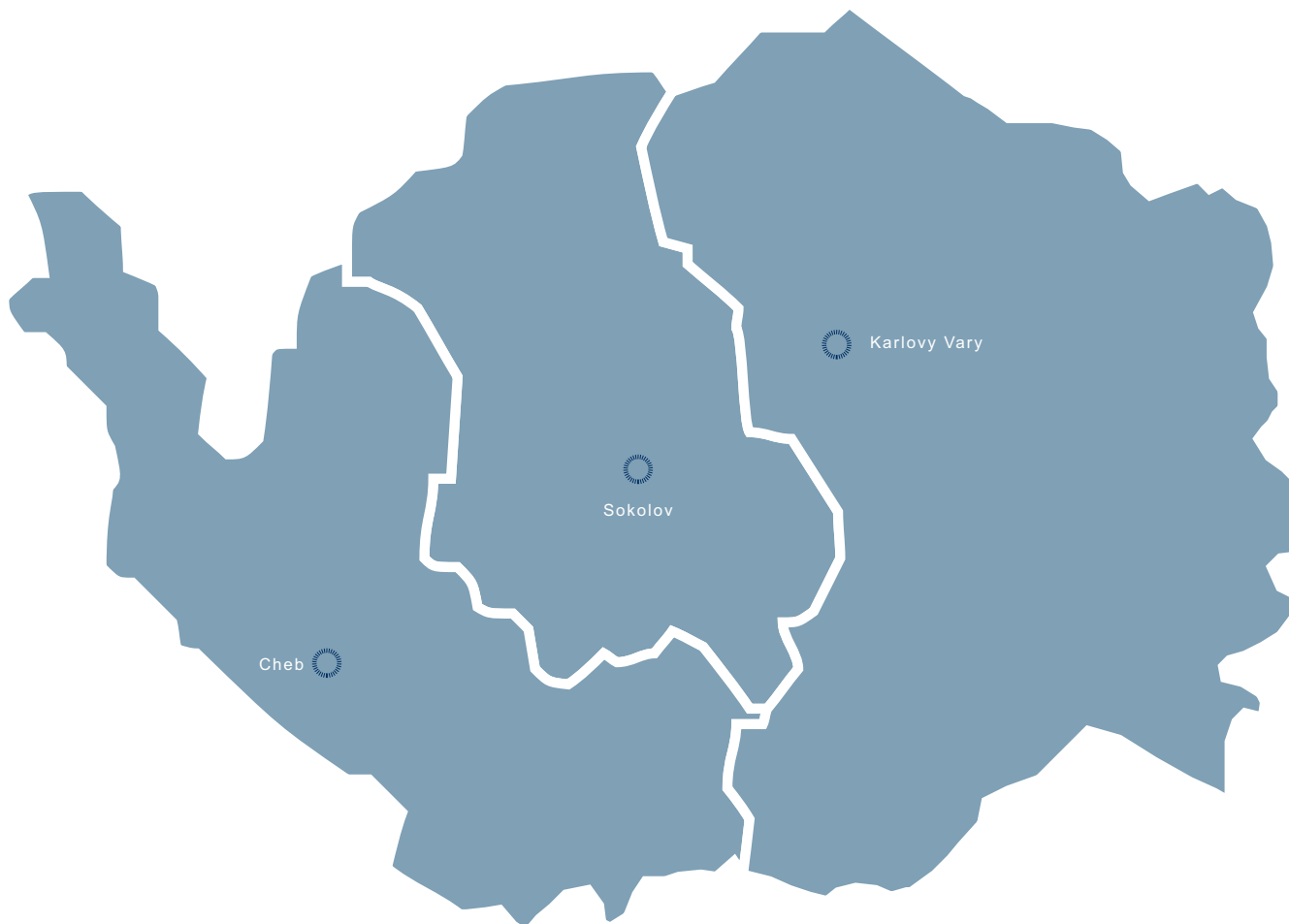


KARLOVY VARY REGION

DISTRICT CHEB
DISTRICT KARLOVY VARY
DISTRICT SOKOLOV



ABOUT REGION

Karlovy Vary Region is situated on the western boundary with Saxony and Bavaria. It is neighboring only with two other Czech regions, Ústecký and Plzeň. The region consists of three districts: Cheb, Karlovy Vary and Sokolov. Its area is 3,315 km² (4.2 % of the country's territory, 12th largest region in Czech Republic). Only Liberec Region and Prague are less spacious. With 308,420 inhabitants (3.0 % of the country's population) as of H1 2009 Karlovarský was the third least populated region in the Czech Republic.

There are only 132 communities in the region (the lowest number in the country). Karlovy Vary, with a population of 51,202, is regional capital. There are 13 towns with populations over 5,000 in the region.

Tourism is the most important economical sector in the region. Spas in its four towns (Karlovy Vary, Františkovy Lázně, Mariánské Lázně, Jáchymov) provide for about 44 % of all balneal health care in Czech Republic and over 70 % of their clientele come from abroad. Therefore the region is easily keeping itself on the top of statistics with 7.6 days as the "foreign visitor's average length of stay," Prague being the second. Accommodation and gastronomy provide for 4 percent of gross added value created in the region. Also in this respect Karlovy Vary Region is number one in the country, ahead of Prague (3.1 %).

Of interest for tourists are the castles in Cheb, Loket, Kynžvart, Ostrov and Bečov nad Teplou. The mountain range of Krušné hory is well suited for outdoor sports. The vicinity of the Krušnohorská ski highway is known for its large offer of accommodation. In the last several decades there have been numerous golf courses built in the region. Large parts of the region

are parts of the sanctuary Slavkovský les. There are many bicycle paths, as well.

Some universities from other parts of the country have established their affiliates in the Karlovy Vary Region. The economic college of Západočeská universita (West Bohemia University) in Cheb is the most important among them. The importance of ČZU Prague College in Cheb and UK Medical College in Mariánské Lázně is marginal. Key disciplines are tourism, balneology, and third market economy. A private university (Karlovy Vary University) provides a bachelor degree program for students of law.

Karlovy Vary Region shows extreme figures in many areas of statistics. The reason is mainly its anomalous economic structure fully focused on tourism. Besides ceramic manufacturing the most developed industries in the region are lumber, textiles and chemistry. Lately there was a certain growth in automobile spare parts production. The industrial clusters that are well established here are related to the production of musical instruments.

Karlovy Vary Region's potential is based on self-sufficiency in raw materials for traditional industries like balneology, ceramic manufacturing, and lumber. There are many entrepreneurs in the region, a very high rate of employees in the sector of services, the highest concentration of spas in Czech Republic, one of the largest accommodation capacities and the longest average stay of foreign tourists. A high speed transport connecting Karlovy Vary to the capital is being built, the number of flights at Karlovy Vary Airport is to be enlarged and the age pattern of the local population is rather positive.

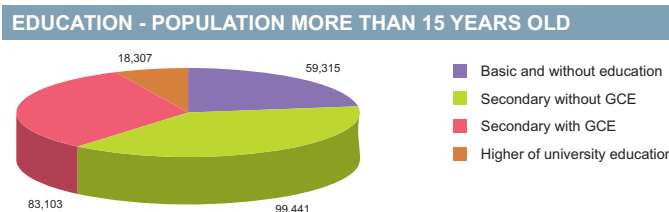
BASIC DATA	
Land Area	3,315 km ²

ACTUAL SITUATION ON LABOUR MARKET	
Population	308,420
Percentage in the total population of Czech Republic (%)	2.9
Population density (person/km ²)	93.0
Workforce	170,459
Number of job seekers	16,960
Unemployment rate (%)	9.7

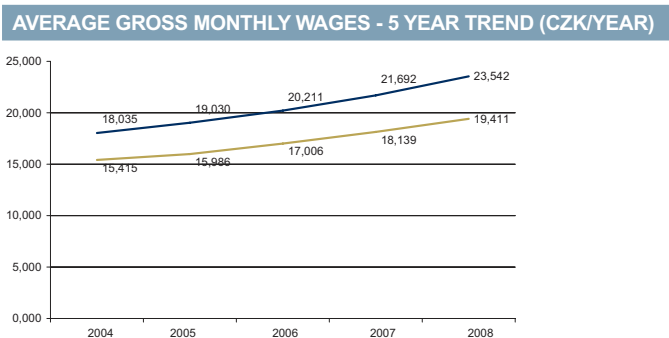
Source: Czech Statistical Office, Ministry of Labour and Social Affairs

NUMBER OF ECONOMIC UNITS ACCORDING TO PREVAILING ACTIVITY	
Total	80,802
Industry	8,657
Construction	8,818
Agriculture & forestry	3,700
Services	58,951

Source: Czech Statistical Office



Source: Czech Statistical Office



Source: Czech Statistical Office

GDP BY REGIONS				
Region	TOTAL		Per capita	
	mIn. CZK	mIn. EUR	Total CZK	Total EUR
Karlovy Vary	73 624	2 952	240 901	8 676
Average GDP for Czech regions	252 161	10 110	341 989	13 711
Share in GDP of the Czech Republic	2%			

Source: Czech Statistical Office

AVERAGE GROSS MONTHLY WAGES - 5 YEAR TREND										
Year	2004		2005		2006		2007		2008	
	CZK	EUR	CZK	EUR	CZK	EUR	CZK	EUR	CZK	EUR
Karlovy Vary	15,415	483	15,986	537	17,006	600	18,139	653	19,411	778
Average for Czech Republic	18,035	565	19,030	639	20,211	713	21,692	781	23,542	944

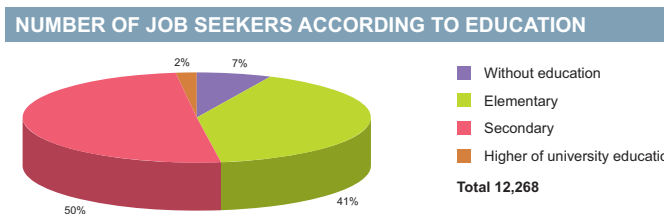
Source: Czech Statistical Office

ADMINISTRATIVE BREAKDOWN	
Number of districts	3
Number of municipalities	132
of that, number of towns	37

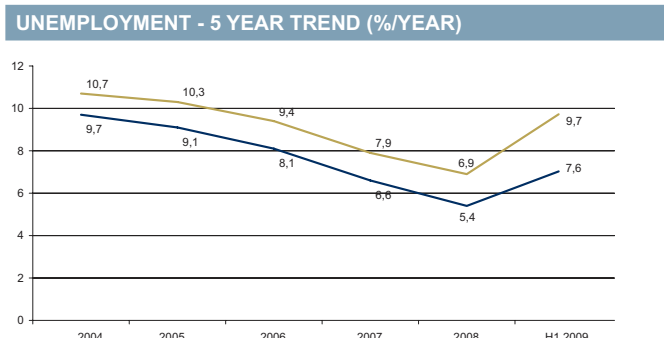
Source: Czech Statistical Office

NUMBER OF EMPLOYEES AND GROSS MONTHLY WAGES IN MANUFACTURING ACCORDING TO NACE CLASSIFICATION		
	Number of employees	Wages (EUR)
Manufacturing	19,732	741
Man. of food products, beverages and tobacco products	1,114	1,089
Man. of chemical, chemical products, pharmaceuticals, and chemical fibres	NA	NA
Man. of rubber and plastic products	925	708
Man. of basic metals and fabricated metal products	3,452	829
Man. and repairs of machinery and equipment	2,411	754
Man. of electrical and optical equipment	2,801	639
Man. of transport equipment	472	765

Source: Czech Statistical Office



Source: Ministry of Labour and Social Affairs



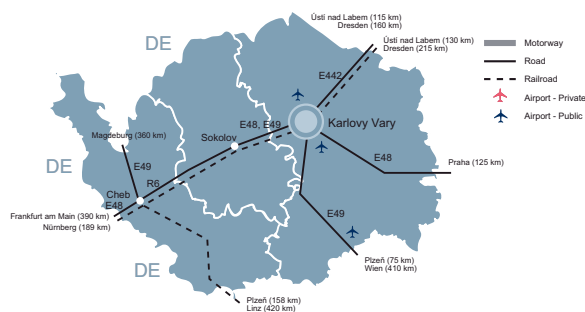
Source: Czech Statistical Office

FOREIGN DIRECT INVESTMENT		
Region	FDI (CZK)	FDI (EUR)
min.	17 940 192	673 937
Karlovy Vary	17 940 192	673 937
max.	1 049 062 899	39 408 824
Average	145 150 799	5 452 697

Source: Czech National Bank

LIST OF AIRPORTS			
	Specification		
	Public/Private	Civil/Military/Varied	International/Intranational
Karlovy Vary	Public	Civil	International
Mariánské Lázně	Public	Civil	Intranational
Toužim	Public	Civil	Intranational

Source: Ministry of Transport, Aerobaze.cz



SCHOOL SYSTEM			
	Number of schools	Number of students	Number of graduates
Secondary schools			
Technical fields	n/a	3 646	909
Economic fields	n/a	4 719	983
ICT fields	n/a	656	149
Higher schools			
Technical fields	n/a	n/a	n/a
Economic fields	n/a	149	46
ICT fields	n/a	n/a	n/a
Universities			
Technical fields	n/a	n/a	n/a
Economic fields	1	169	34
ICT fields	n/a	n/a	n/a

Source: Institute for Information on Education

LABOUR OFFICE				
City	Address	Phone	Fax	E-mail
Cheb	Svobody č.p. 207/52, 350 02 Cheb 2	950 117 111	950 117 302	sekretariat.up@ch.mpsv.cz
Karlovy Vary	Svahová 1170/24, 360 01 Karlovy Vary 1	353 239 511	353 225 544	kvary@kv.mpsv.cz
Sokolov	Jednoty 654, 356 01 Sokolov 1	352 327 211	352 327 302	sokolov@so.mpsv.cz

Source: Ministry of Labour and Social Affairs

KNOWLEDGE OF FOREIGN LANGUAGES			
LANGUAGE	ALL SKILLS LEVEL (%)	LANGUAGE	ALL SKILLS LEVEL (%)
English	52.5	Spanish	1.6
German	67.2	Polish	4.9
French	9.8	Russian	49.2
Italian	4.9	Nordic languages	0.0

Source: Augur Consulting

LIST OF UNIVERSITIES 2009				
Name of school	WWW	Orientation	Titles awared	Students
Vysoká škola Karlovy Vary	www.vskv.cz	Law, public administration	Bc.	1 355

Source: Institute for Information on Education

IMPORTANT COMPANIES IN THE REGION ACCORDING TO TURNOVER							
Name of company	Location	Employees	Activity (Sector)	Turnover	Phone	E-mail	WWW
Sokolovská uhelná, právní nástupce, a.s.	Sokolov	4000 - 4999	Mining and agglomeration of lignite	11 684	352 461 111, 352 465 664	info@suas.cz	www.suas.cz
Glovex, s.r.o.	Aš	n/a	Other retail sale in non-specialized stores	11 505	354 526 378, 354 526 551	glovex@seznam.cz	
Witte Nejdek, s.r.o.	Nejdek	1500 - 1999	Manufacture of locks and hinges	5 510	359 016 134, 359 016 152	info@witte-automotive.cz	www.witte-automotive.cz
Hexion Specialty Chemicals, a.s.	Sokolov	500 - 999	Manufacture of other organic basic chemicals	3 679	352 614 111, 352 614 200		www.hexionchem.com
Domo, a.s.	Cheb	1 - 5	Architectural and engineering services (incl. design)	3 652	354 438 312, 354 544 388	domo@gmail.cz	
Velta Plus EU, s.r.o.	Karlovy Vary - Stará Role	100 - 199	Wholesale of tobacco products	1500 mil. a více	353 447 455, 353 447 460	info@veltaplus.cz	www.veltaplustobacco.cz, www.veltaplus.cz
Michal Makarovič - KOMAK	Dolní Rychnov	25 - 49	Maintenance and repair of motor vehicles	1500 mil. a více	352 621 042, 352 621 669	komak@iol.cz	
Karlovarské minerální vody, a.s.	Karlovy Vary	250 - 499	Production of mineral waters and soft drinks	1500 mil. a více	353 169 322, 353 169 311	info@mattoni.cz	www.mattoni.cz
Egeria, s.r.o.	Chodov	25 - 49	Wholesale of solid, liquid and gaseous fuels and related products	1500 mil. a více	352 675 931, 602 157 160	egeria@egeria.cz	www.egeria.cz
Jan Becher - Karlovarská Becherovka,	Karlovy Vary	100 - 199	Manufacture of distilled potable alcoholic beverages	1 440	255 732 111, 359 578 156	info@jan-becher.com	www.becherovka.cz, www.janbecher.cz
K Oil křeček, s.r.o.	Sokolov	10 - 19	Retail sale of automotive fuel	1000 - 1499 mil.	352 627 137, 352 627 833		
Amphenol - Tuchel Electronics GmbH	Ostrov	n/a	Manufacture of electricity distribution and control apparatus	1000 - 1499 mil.	359 900 237, 359 900 329	amphenol@iol.cz	
KE Ostrov - Elektrik, s.r.o.	Ostrov	250 - 499	Manufacture of electrical equipment for engines and vehicles n.e.c.	841	353 822 249, 353 612 058		
Trelleborg Lesina, s.r.o.	Cheb	25 - 49	Manufacture of other rubber products	839	354 524 911, 354 524 943		
Rexam Pelainer Aš, s.r.o.	Aš	100 - 199	Manufacture of plastic packing goods	798	354 501 210, 354 501 217	info@rexam.com	www.rexam.com
Léčebné lázně Mariánské Lázně a. s.	Mariánské Lázně	500 - 999	Hospital activities	787	354 655 501, 354 655 502	info@badmarienbad.cz	www.marienbad.cz
TOP Tank, s.r.o.	Březová	25 - 49	Retail sale of automotive fuel	761			
S. & W. Automobily, s.r.o.	Jenišov	50 - 99	Retail sale in non-specialized stores	755	353 447 811, 353 565 751	suwkv@suwkv.com	www.suwkv.com
Lázně Františkovy Lázně, a.s.	Františkovy Lázně	1000 - 1499	Hospital activities	667	354 201 318, 354 201 104	franzensbad@franzensbad.cz	www.franzensbad.cz
Lias Vintřov, lehký stavební materiál,	Vintřov	200 - 249	Manufacture of other non-metallic mineral products n.e.c.	609	352 665 483, 352 665 446	info@liapor.cz	www.liapor.cz

Source: Albertina Company Monitor

SELECTED CZECHINVEST PROJECTS IN THE REGION					
Name	Location	Investor	Country	Sector	Year
Apt Cheb s.r.o.	Cheb	Apt Hiller GmbH	Germany	engineering	2008
JSP International s.r.o.	Cheb	JSP	Japan	plastics, rubber	2004
Karlovarské minerální vody, a.s.	Cheb	Karlovarské minerální vody	Czech Republic/Netherlands	other	2000
Lias Vintřov, lehký stavební materiál k.s.	Vintřov	Lias Vintřov, lehký stavební materiál k.s.	Czech Republic	other	2008
Linde Sokolovská s.r.o.	Vřesová	Linde Sokolovská	Germany	chemistry, pharmacy	2003
Lindner-Türen Fassaden s.r.o.	Ostrov	Lindner Aktiengesellschaft Decken-, Boden-, Trennwandsysteme	Germany	other	2005
Nejdecká česárna vlny, a. s.	Karlovy Vary	G.MODIANO	United Kingdom	other	2006
OKIN Group, a.s.	Ostrava, Ústí nad Labem, Karlovy Vary	OKIN Group, a.s.	Czech Republic	strategic services centre	2008
Playmobil CZ spol. s r.o.	Hradiště u Chebu	Horst Brandsstätter	Germany	plastics, rubber	2005
SCHNEEBERGER s.r.o.	Dolní Dvory	W. Schneeberger	Switzerland	engineering	2005
Trelleborg Lesina, s.r.o.	Lesina	Trelleborg AB	Sweden	chemistry, pharmacy	2008
WITTE Nejdek, spol. s r.o.	Nejdek	WITTE Nejdek, spol. s r.o.	Czech Republic	metal products	2008

Source: CzechInvest

RENTS IN INDUSTRIAL PREMISES IN CR REGIONS (EUR/sqm/month)

Karlovy Vary Region	3,75-4,25
Note 1: Net effective rents for units ca 4,000 sq m which is average deal size in the market	
Note 2: Premises are immediately available only some regions.	

Source: CB Richard Ellis

PRIME RENTS IN SHOPPING CENTRES (EUR/sqm/month)

Karlovy Vary Region	25-30
Note: for units ca 100 sqm.	

Source: CB Richard Ellis

INDUSTRIAL PARKS IN THE CZECH REPUBLIC

Project	Region	City/ Town	Total Area (warehouse + office)	Year of Completion
CTPark Hranice	Karlovy Vary	Hranice	51 653	2008

Source: CB Richard Ellis

SELECTED INDUSTRIAL ZONES IN THE KARLOVY VARY REGION

Industrial zone	Area (ha)
Cheb	30,00
Ostrov II	18,58
Sokolov - průmyslová zóna Silvestr	640,98

Source: CzechInvest

IMPORTANT CONTACTS IN THE REGION
Regional Council

Závodní 353/88, 36001 Karlovy Vary
 tel.: 353 502 111, fax: 353 331 509
 epodatelna@kr-karlovarsky.cz
 knihapraniasiznosti@kr-karlovarsky.cz
 www.kr-karlovarsky.cz

City Hall – Karlovy Vary

Moskevská 21, 36120 Karlovy Vary
 tel.: 353 118 111
 fax: 353 118 400
 Email: posta@mmkv.cz
 URL: www.mmkv.cz

CzechInvest - Regional Office

Na Vyhlídce 53, 360 01 Karlovy Vary
 tel.: 353 116 226, 353 116 222
 fax: 353 116 301
 Email: karlovyvary@czechinvest.org
 Contact persons: Ing. Jarmila Chvojanová, Ing. Barbora Krejčová

Regional Development Agency - Ústí nad Labem

Velká Hradební 3118/48, 400 02 Ústí nad Labem
 tel.: 476 206 538
 fax: 476 706 331
 Email: kucera@rra.cz, rra@rra.cz
 URL: www.rra.cz

CzechTrade Regional Information Place - Sokolov

U Divadla 339, 356 01 Sokolov
 tel.: 352 638 426, 724 613 974
 fax: 352 638 492
 Email: sokolov-czechtrade@komora.cz
 URL: www.rhkpoohri.cz
 Contact person: Ing. Evžen Sháněl

South Bohemian Economic Chamber

Husova 9, 370 01 České Budějovice
 tel.: 387 318 433
 fax: 387 318 431
 Email: info@jhk.cz
 URL: www.jhk.cz
 Contact person: Eva Mrázová

Regional Economic Chamber - Poohří

U Divadla 339, 356 01 Sokolov
 tel.: 352 638 484, -9, 352 624 450
 fax: 352 638 487, 352 628 489
 Email: info@rhkpoohri.cz, rhkpoohri@mbox.vol.cz,
 josef.pisecky@rhkpoohri.cz
 URL: www.rhkpoohri.cz
 Contact person: Renata Schimmerová

UTILITIES
GAS

Západočeská plynárenská, a.s.
 Plynárenská 1, 360 21 Karlovy Vary
 tel.: 353 244 111
 fax: 353 244 312
 Email: kontakt@zcp.cz
 URL: www.zcp.cz

WATER AND SEWER SYSTEM
Vodárny a kanalizace Karlovy Vary, a.s.

Studentská 328/64, 360 07 Karlovy Vary
 tel.: 359 010 111
 fax: 353 332 211
 Email: vak@vakkv.cz
 URL: www.vakkv.cz

HEAT
Terea Cheb, s.r.o.

Májová 588/33, 350 48 Cheb
 tel.: 354 524 411, 354 524 416, 354 524 424
 fax: 354 524 419
 Email: info@terea-cheb.cz
 URL: www.terea-cheb.cz



DISTRICT CHEB

BASIC DATA

Land Area	933 km ²
-----------	---------------------

TOWNS WITH POPULATION OVER 5,000

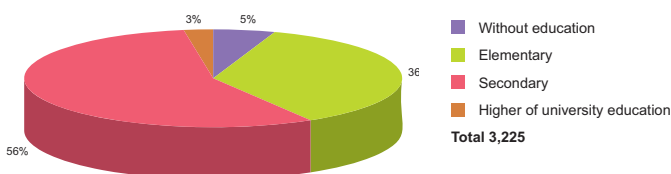
Cheb	34,818
Mariánské Lázně	13,915
Aš	13,261
Františkovy Lázně	5,592

ACTUAL SITUATION ON LABOUR MARKET

Population	95,413
Percentage in the total population of Czech Republic (%)	30.9
Population density (person/km ²)	102.2
Workforce	54,303
Number of job seekers	4,804
Unemployment rate (%)	8.8

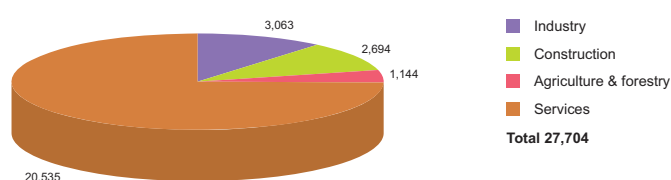
Source: Czech Statistical Office, Ministry of Labour and Social Affairs

NUMBER OF JOB SEEKERS ACCORDING TO EDUCATION



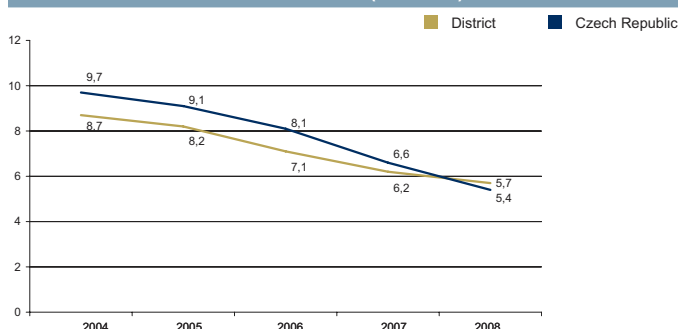
Source: Ministry of Labour and Social Affairs

NUMBER OF ECONOMIC UNITS ACCORDING TO PREVAILING ACTIVITY



Source: Czech Statistical Office

UNEMPLOYMENT - 5 YEAR TREND (%/YEAR)



Source: Czech Statistical Office

FOREIGN DIRECT INVESTMENT

	FDI (CZK)	FDI (EUR)
Cheb	4 382 005	164 613
CR (total)	2 032 111 185	76 337 761
Prague	1 049 062 899	39 408 824
Karlovy Vary Average	5 980 064	224 646

Source: Czech National Bank

IMPORTANT COMPANIES IN THE DISTRICT ACCORDING TO TURNOVER

Name of company	Location	Employees	Activity (Sector)	Turnover	www
Gloves, s.r.o.	Aš	n/a	Other retail sale in non-specialized stores	11 505	
Domo, a.s.	Cheb	1 - 5	Architectural and engineering services (incl. design)	3 652	
Trelleborg Lesina, s.r.o.	Cheb	25 - 49	Manufacture of other rubber products	839	
Rexam Petainer Aš, s.r.o.	Aš	100 - 199	Manufacture of plastic packing goods	798	www.rexam.com
Léčebné lázně Mariánské Lázně a. s.	Mariánské Lázně	500 - 999	Hospital activities	787	www.marienbad.cz
Lázně Františkovy Lázně, a.s.	Františkovy Lázně	1000 - 1499	Hospital activities	667	www.franzensbad.cz
Markop FL, s.r.o.	Cheb	20 - 24	Retail sale of automotive fuel	524	www.markop.cz
Van Hoan Tran	Cheb	n/a	Other retail sale of new goods in specialized stores	500 - 999 mil.	
Prefa - Beton Cheb, s.r.o.	Cheb	100 - 199	Manufacture of concrete products for construction purposes	500 - 999 mil.	www.prefa-beton-cheb.cz
Město Aš	Aš	100 - 199	General (overall) public service activities	500 - 999 mil.	www.muas.cz
Julie Suchopárová	Františkovy Lázně	10 - 19	Activities auxiliary to financial intermediation n.e.c.	500 - 999 mil.	
Agrona, a. s.	Nebanice	n/a	Other wholesale	500 - 999 mil.	www.agrona.cz
Lagarde Spedition, s.r.o.	Cheb	100 - 199	Freight transport by road	462	www.lagardesped.cz
Slévárna Heunisch, a. s.	Krásná	250 - 499	Casting of light metals	456	www.heunisch-guss.cz
Tekaz, s.r.o.	Cheb	100 - 199	Manufacture of metal structures and parts of structures	300 - 499 mil.	www.tekaz-cheb.cz
Quadriile, s.r.o.	Vojtanov	n/a	Renting of automobiles	300 - 499 mil.	
JSP International, s.r.o.	Cheb - Hradiště	25 - 49	Other wholesale	387	
Ingo Casino, a.s.	Františkovy Lázně	500 - 999	Gambling and betting activities	300 - 499 mil.	www.ingocasino.cz
GR electronic, s.r.o.	Hranice	500 - 999	Manufacture of parts and accessories for motor vehicles and their engines	392	www.gr-electronic.cz
Chevak Cheb, a.s.	Cheb - Hradiště	n/a	Collection, purification and distribution of water	289	www.chevak.cz

DISTRICT KARLOVY VARY



BASIC DATA

Land Area	1,628 km ²
-----------	-----------------------

TOWNS WITH POPULATION OVER 5,000

Karlovy Vary	51,202
Ostrov	17,250
Nejdek	8,446

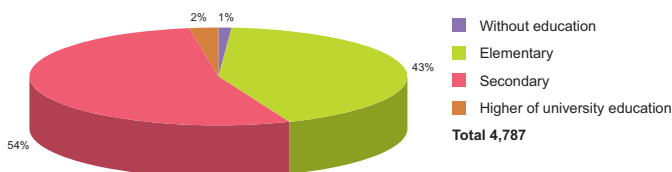
Source: Czech Statistical Office

ACTUAL SITUATION ON LABOUR MARKET

Population	119,993
Percentage in the total population of Czech Republic (%)	38.9
Population density (person/km ²)	73.7
Workforce	66,100
Number of job seekers	6,483
Unemployment rate (%)	9.5

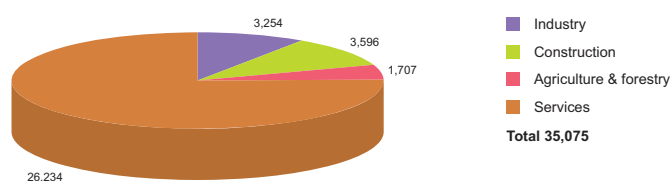
Source: Czech Statistical Office, Ministry of Labour and Social Affairs

NUMBER OF JOB SEEKERS ACCORDING TO EDUCATION



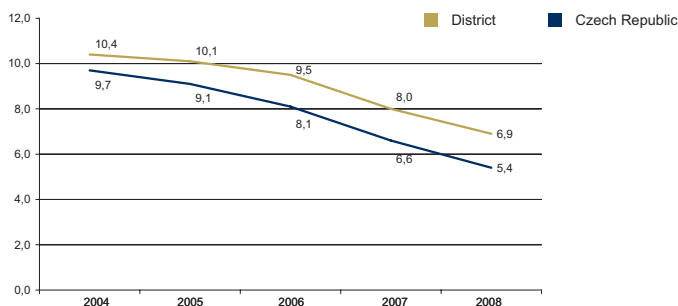
Source: Ministry of Labour and Social Affairs

NUMBER OF ECONOMIC UNITS ACCORDING TO PREVAILING ACTIVITY



Source: Czech Statistical Office

UNEMPLOYMENT - 5 YEAR TREND (%/YEAR)



Source: Czech Statistical Office

FOREIGN DIRECT INVESTMENT

	FDI (CZK)	FDI (EUR)
Karlovy Vary	8 490 537	318 953
CR (total)	2 032 111 185	76 337 761
Prague	1 049 062 899	39 408 824
Karlovy Vary Average	5 980 064	224 646

Source: Czech National Bank

IMPORTANT COMPANIES IN THE DISTRICT ACCORDING TO TURNOVER

Name of company	Location	Employees	Activity (Sector)	Turnover	www
Witte Nejdek, s.r.o.	Nejdek	1500 - 1999	Manufacture of locks and hinges	5 510	www.witte-automotive.cz
Velta Plus EU, s.r.o.	Karlovy Vary - Stará Role	100 - 199	Wholesale of tobacco products	1500 mil. and more	www.veltaplustobacco.cz
Karlovarské minerální vody, a.s.	Karlovy Vary	250 - 499	Production of mineral waters and soft drinks	1500 mil. and more	www.mattoni.cz
Jan Becher - Karlovarská Becherovka,	Karlovy Vary	100 - 199	Manufacture of distilled potable alcoholic beverages	1 440	www.becherovka.cz
Karlovarská krajská nemocnice a.s.	Karlovy Vary	1000 - 1499	Hospital activities	1 327	www.nemkv.cz
Amphenol - Tachel Electronics GmbH	Ostrov	n/a	Manufacture of electricity distribution and control apparatus	1000 - 1499 mil.	
KE Ostrov - Elektrik, s.r.o.	Ostrov	250 - 499	Manufacture of electrical equipment for engines and vehicles n.e.c.	841	
TOP Tank, s.r.o.	Březová	25 - 49	Retail sale of automotive fuel	761	
S. & W. Automobily, s.r.o.	Jenišov	50 - 99	Retail sale in non-specialized stores	755	www.suwkv.com
Sedlečský kaolín a. s.	Božičany	200 - 249	Mining of kaolin	599	www.sedlecky-kaolin.cz
Vodárny a kanalizace Karlovy Vary, a.s.	Karlovy Vary - Doubí	500 - 999	Collection, purification and distribution of water	593	www.vakkv.cz
ŠKODA HOLDING a.s.	Praha 1	50 - 99	Manufacture of engines and turbines, except aircraft, vehicle and cycle engines	500 - 999 mil.	www.skoda.cz
Karlovarský porcelán, a.s.	Karlovy Vary - Stará Role	1500 - 1999	Manufacture of household and ornamental chinaware	500 - 999 mil.	www.thun.cz
Karlovarská Korunní, s.r.o.	Stráž nad Ohří	50 - 99	Production of mineral waters and soft drinks	522	www.korunni.cz
Golem - velkoobchod nápojů, a.s.	Karlovy Vary - Stará Role	100 - 199	Wholesale of alcoholic and other beverages	500 - 999 mil.	www.golem-kv.cz
Golem - autodoprava, s.r.o.	Karlovy Vary - Stará Role	100 - 199	Freight transport by road	500 - 999 mil.	www.golem-kv.cz
Alfa Therm, a.s.	Jenišov	250 - 499	Other retail sale in non-specialized stores	500 - 999 mil.	www.alfatherm.cz
Jednota, spotřební družstvo v Toužimi	Toužim	100 - 199	Retail sale in non-specialized stores with food, beverages or tobacco predominating	491	
OK STS Toužim, a.s.	Toužim	250 - 499	Manufacture of other fabricated metal products n.e.c.	460	www.oksts.cz
Karlovarská teplárenská, a.s.	Karlovy Vary - Bohatice	50 - 99	Steam and hot water supply	398	www.kvtas.cz



DISTRICT SOKOLOV

BASIC DATA	
Land Area	754 km ²

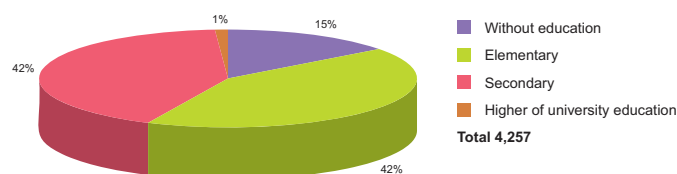
TOWNS WITH POPULATION OVER 5,000			
Sokolov	24,488	Horní Slavkov	5,749
Chodov	14,321	Habartov	5,289
Kraslice	7,120	Kynšperk nad Ohří	5,046

Source: Czech Statistical Office

ACTUAL SITUATION ON LABOUR MARKET	
Population	93,015
Percentage in the total population of Czech Republic (%)	30.2
Population density (person/km ²)	123.4
Workforce	50,057
Number of job seekers	5,674
Unemployment rate (%)	10.9

Source: Czech Statistical Office, Ministry of Labour and Social Affairs

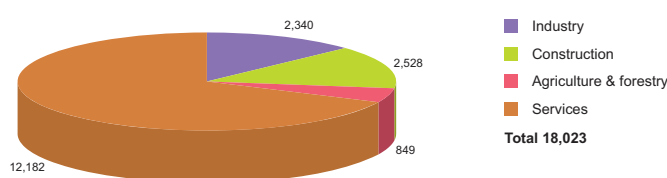
NUMBER OF JOB SEEKERS ACCORDING TO EDUCATION



Source: Ministry of Labour and Social Affairs

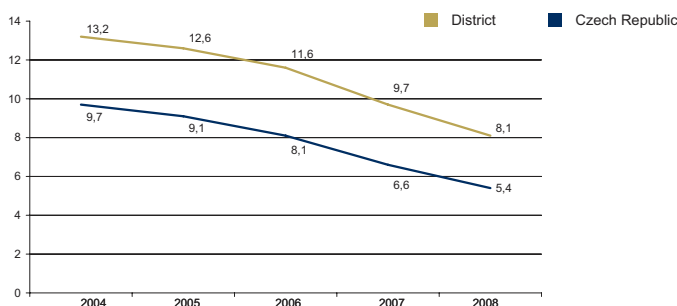


NUMBER OF ECONOMIC UNITS ACCORDING TO PREVAILING ACTIVITY



Source: Czech Statistical Office

UNEMPLOYMENT - 5 YEAR TREND (%/YEAR)



Source: Czech Statistical Office

FOREIGN DIRECT INVESTMENT

	FDI (CZK)	FDI (EUR)
Sokolov	5 067 650	190 370
CR (total)	2 032 111 185	76 337 761
Prague	1 049 062 899	39 408 824
Karlovy Vary Average	5 980 064	224 646

Source: Czech National Bank

IMPORTANT COMPANIES IN THE DISTRICT ACCORDING TO TURNOVER

Name of company	Location	Employees	Activity (Sector)	Turnover	www
Sokolovská uhelná, právní nástupce, a.s.	Sokolov	4000 - 4999	Mining and agglomeration of lignite	11 684	www.suas.cz
Hexion Specialty Chemicals, a.s.	Sokolov	500 - 999	Manufacture of other organic basic chemicals	3 679	www.hexionchem.com
Michal Makarovič - KOMAK	Dolní Rychnov	25 - 49	Maintenance and repair of motor vehicles	1500 mil. and more	
Egeria, s.r.o.	Chodov	25 - 49	Wholesale of solid, liquid and gaseous fuels and related products	1500 mil. and more	www.egeria.cz
K Oil křeček, s.r.o.	Sokolov	10 - 19	Retail sale of automotive fuel	1000 - 1499 mil.	
Lias Vintířov, lehký stavební materiál,	Vintířov	200 - 249	Manufacture of other non-metallic mineral products n.e.c.	609	www.liapor.cz
Sokolovské strojírný a. s.	Sokolov	250 - 499	Manufacture of machinery for mining, quarrying and construction	520	www.sokstr.cz
Nabau, s.r.o.	Kynšperk nad Ohří	100 - 199	Manufacture of other products of wood	477	www.nabau.cz
Car Trim, k.s.	Kraslice	250 - 499	Manufacture of interior ready-made products (except carpets)	449	www.cartrim.cz
Dachdecker, s.r.o.	Dolní Rychnov	50 - 99	Agents involved in the sale of timber and building materials	373	www.dachdecker-deg.cz
Böhm - Plast, s.r.o.	Krajková	n/a	Manufacture of other plastic products	362	
Stax Metal Fibers, s.r.o.	Sokolov - Dasnice	100 - 199	Forging, pressing, stamping and roll forming of metal; powder metallurgy	338	www.stax.cz, www.stax.de
Manfred Schöner- Autoservis	Sokolov	50 - 99	Activities auxiliary to insurance and pension funding	300 - 499 mil.	www.autoschoner.cz
Svatavské strojírný, s.r.o.	Svatava	n/a	Manufacture of cutlery, tools and general hardware	291	www.svsro.cz
Chodos Chodov, s.r.o.	Chodov	n/a	Manufacture of other special purpose machinery and equipment	284	www.chodos.cz
Vodohospodářská společnost Sokolov,	Sokolov	100 - 199	Collection and treatment of sewage	262	www.voss.cz
bss Báňská Stavební Společnost, s.r.o.	Sokolov	100 - 199	General construction of buildings and civil engineering works	238	www.bss-so.cz
L.C. Sokotrans Reality, a.s.	Sokolov	25 - 49	Freight transport by road	234	www.lcsokotrans.cz
Amati - Denak, s.r.o.	Kraslice	500 - 999	Manufacture of musical instruments	225	www.amati.cz
Isso - Inženýrské stavby Sokolov, s.	Svatava	50 - 99	General construction of buildings and civil engineering works	223	www.volny.cz/isso