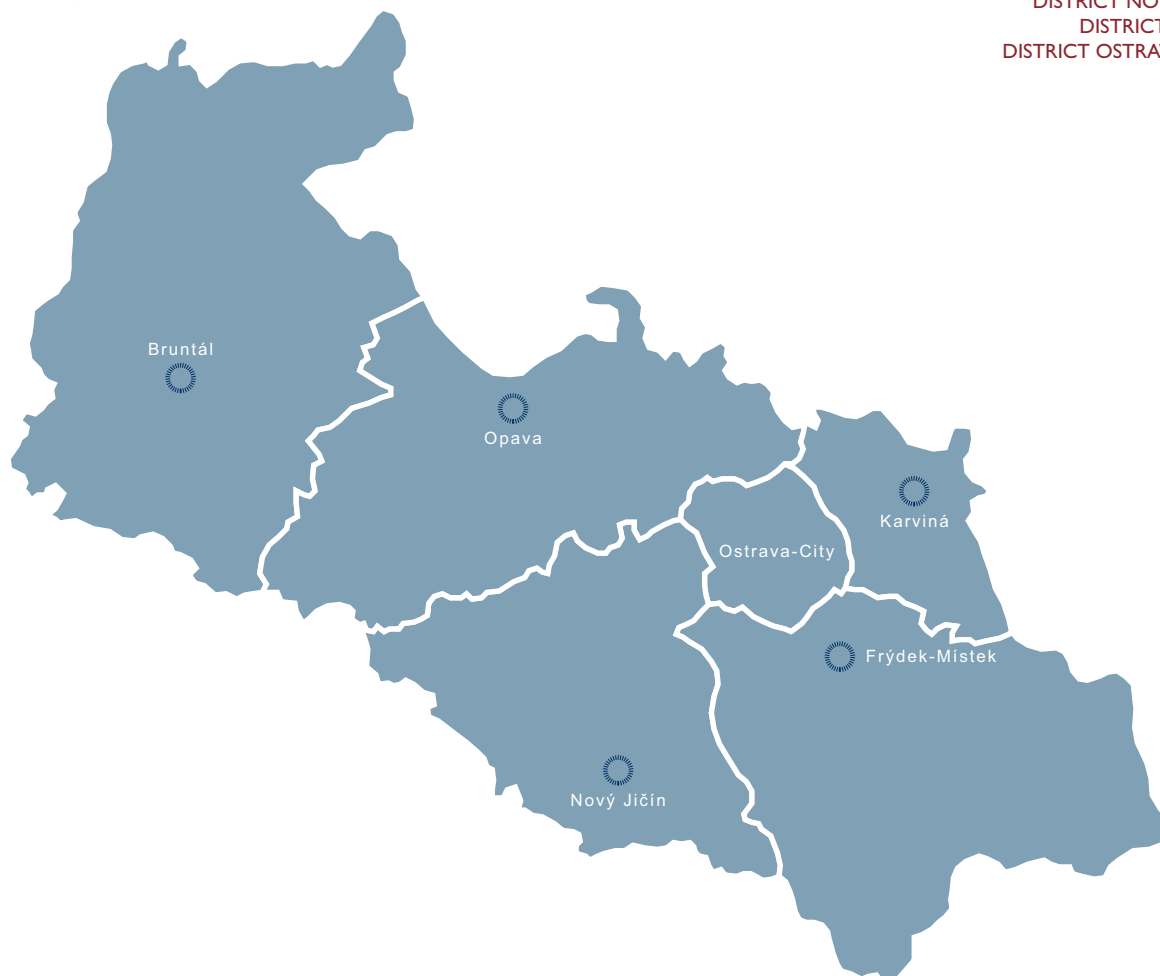


# MORAVIA-SILESIA REGION

DISTRICT BRUNTÁL  
 DISTRICT FRÝDEK-MÍSTEK  
 DISTRICT KARVINÁ  
 DISTRICT NOVÝ JIČÍN  
 DISTRICT OPAVA  
 DISTRICT OSTRAVA-CITY



## ABOUT REGION

The Moravia-Silesia Region lies in northern Moravia along the Polish and Slovak borders. Its other neighbors are the regions of Olomouc and Zlín. Moravia-Silesia is divided among six districts: Bruntal, Frýdek-Místek, Karvina, Nový Jičín, Opava and Ostrava. Its area is 5,427 km<sup>2</sup> or 6.9 % of the national territory, making it the 6th largest region in the country.

Moravia-Silesia is the most populated region in Czech Republic. As of H1 2009 there were 1 250 262 inhabitants which is around 12% of the population of the Czech Republic. Inhabitants are concentrated in rather large towns and cities; therefore the region is highly urbanized. Ostrava, the regional capital with a population of 315,901 is the third largest city in the Czech Republic. There are 31 towns and cities with populations exceeding 5,000 in the region.

There are three protected landscape areas in the region, Jeseníky, Poodří and Beskydy (the largest protected landscape area in the Czech Republic). There are downhill slopes, cross country skiing tracks and hiking tracks in sufficient quantity in the Jeseníky and the Beskydy mountains; tourists are going there in all seasons.

There are three urban sanctuaries in Moravia-Silesia: Nový Jičín, Příbor and Štramberk. The most visited castles are Hradec nad Moravicí, Kravaře, Sovinec and Hukvaldy. None of the region's landmarks are registered on the UNESCO list of world heritage but the complex of former mines in Ostrava is on a list of candidates. There are three universities in Moravia-Silesia. Vysoka škola báňská-Technická univerzita Ostrava (a mining uni-

versity, VŠB-Technical university of Ostrava) with seven colleges.

New specializations are being added to traditional studies of this region (mining, geology, metallurgy), including nanotechnologies and mechatronics. Ostravska univerzita (OU) offers studies in both natural sciences and humanities; also pedagogy and art. Slezska univerzita (Silesian University - SU) is divided between Opava and Karviná. Philosophy and natural science is studied in Opava, the business and commerce college is seated in Karvina. There is a similarly oriented Vysoka škola podnikání (Business University) in Ostrava.

Moravia-Silesia Region is an area with a long industrial tradition. The basic sector of activities here consists of metallurgy, mining, energy and heavy industry. Chemistry and electronics industries are other important fields of business. A high number of cluster initiatives are a phenomenon typical for Moravia-Silesia. The most developed clusters are in the fields of renewable sources of energy, machinery, car making and wood working. New technological clusters were founded in the construction industry, ICT and selected specializations of the chemical industry.

The region's potential is in the rich supplies of quality raw materials for the energy and the construction industry as well as a plentitude of qualified workers for selected industries. There is the second largest national airport in the region and two modern railway corridors. Local life environment has been improving substantially, and mountain areas are suitable for further development of tourism in all seasons and cycling.

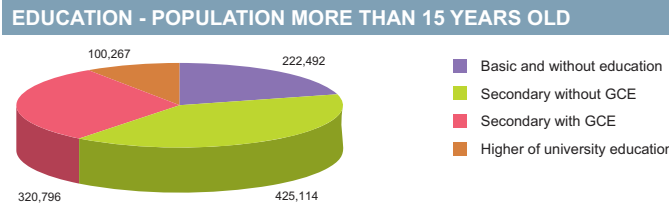
BASIC DATA	
Land Area	5,427 km <sup>2</sup>

ACTUAL SITUATION ON LABOUR MARKET	
Population	1,250,262
Percentage in the total population of Czech Republic (%)	12.0
Population density (person/km <sup>2</sup> )	230.4
Workforce	641,428
Number of job seekers	71,405
Unemployment rate (%)	10.8

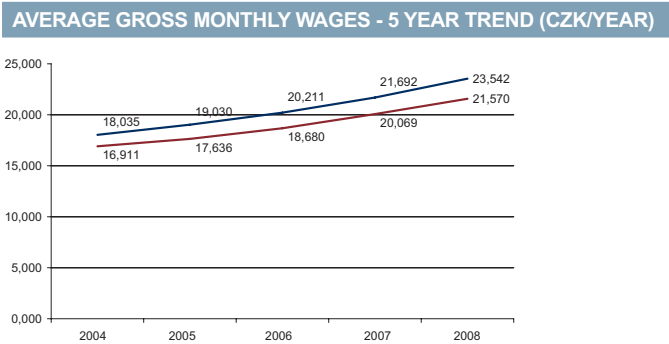
Source: Czech Statistical Office, Ministry of Labour and Social Affairs

NUMBER OF ECONOMIC UNITS ACCORDING TO PREVAILING ACTIVITY	
<b>Total</b>	<b>240,486</b>
Industry	29,875
Construction	25,671
Agriculture & forestry	12,005
Services	171,570

Source: Czech Statistical Office



Source: Czech Statistical Office



Source: Czech Statistical Office

Region	TOTAL		Per capita	
	mIn. CZK	mIn. EUR	Total CZK	Total EUR
Moravia-Silesia	358 031	14 355	286 580	10 321
Average GDP for Czech regions	252 161	10 110	341 989	13 711
Share in GDP of the Czech Republic	10%			

Source: Czech Statistical Office

Year	2004		2005		2006		2007		2008	
	CZK	EUR	CZK	EUR	CZK	EUR	CZK	EUR	CZK	EUR
Moravia-Silesia	16,911	530	17,636	592	18,680	659	20,069	723	21,570	865
Average for Czech Republic	18,035	565	19,030	639	20,211	713	21,692	781	23,542	944

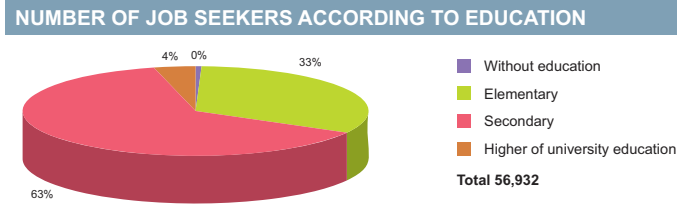
Source: Czech Statistical Office

ADMINISTRATIVE BREAKDOWN	
Number of districts	6
Number of municipalities	299
of that, number of towns	40

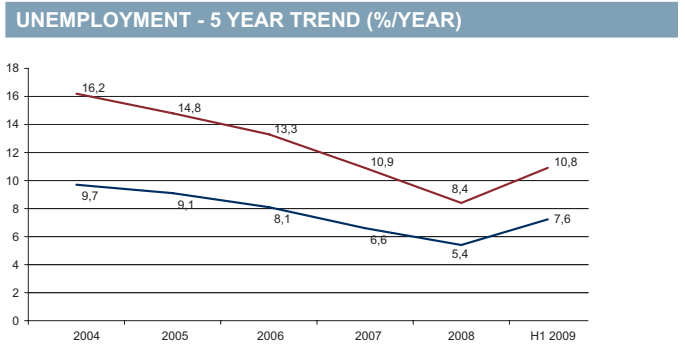
Source: Czech Statistical Office

	Number of employees	Wages (EUR)
<b>Manufacturing</b>	<b>105,311</b>	<b>925</b>
Man. of food products, beverages and tobacco products	4,351	672
Man. of chemical, chemical products, pharmaceuticals, and chemical fibres	3,139	1,013
Man. of rubber and plastic products	5,847	717
Man. of basic metals and fabricated metal products	35,913	1,004
Man. and repairs of machinery and equipment	15,454	917
Man. of electrical and optical equipment	7,343	1,024
Man. of transport equipment	21,468	933

Source: Czech Statistical Office



Source: Ministry of Labour and Social Affairs



Source: Czech Statistical Office

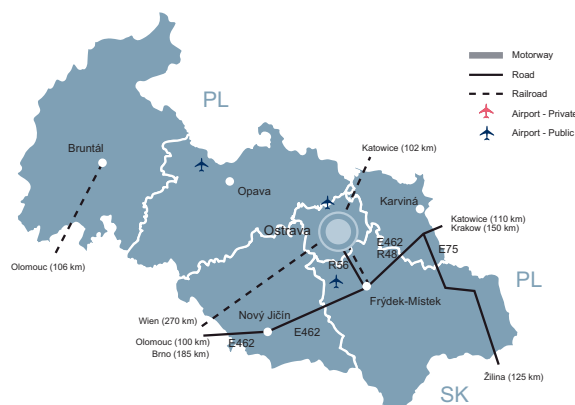
Region	FOREIGN DIRECT INVESTMENT	
	FDI (CZK)	FDI (EUR)
min.	17 940 192	673 937
Moravia-Silesia	164 500 764	6 179 593
max.	1 049 062 899	39 408 824
Average	145 150 799	5 452 697

Source: Czech National Bank

## LIST OF AIRPORTS

	Specification		
	Public/Private	Civil/Military/Varied	International/Intranational
Fřýdlant nad Ostravicí	Public	Civil	Intranational
Kmrov	Public	Civil	Intranational
Ostrava Mošnov	Public	Civil	International
Zábřeh	Public	Civil	Intranational

Source: Ministry of Transport, Aerobaze.cz



## SCHOOL SYSTEM

	Number of schools	Number of students	Number of graduates
<b>Secondary schools</b>			
Technical fields	n/a	20 604	5 158
Economic fields	n/a	19 007	4 739
ICT fields	n/a	5 732	1 476
<b>Higher schools</b>			
Technical fields	n/a	125	37
Economic fields	n/a	1 408	280
ICT fields	n/a	22	13
<b>Universities</b>			
Technical fields	3	15 212	2 823
Economic fields	4	13 154	3 049
ICT fields	4	5 580	1 326

Source: Institute for Information on Education

## LABOUR OFFICE

City	Address	Phone	Fax	E-mail
Bruntál	Květná č.p. 1457/64, 792 01 Bruntál 1	554 705 111	554 712 773	bruntal@br.mpsv.cz
Frydek-Místek	Na Pořící 3510, 738 01 Frydek-Místek 1	950 113 111	558 631 409	posta@fm.mpsv.cz
Karviná	tř. Osvození 1388/60a, 735 06 Karviná 6	950 126 111	596 311 948	sekretariat@ka.mpsv.cz
Nový Jičín	Msgr. Šrámka 1030/8, 741 01 Nový Jičín 1	950 139 111	556 710 020	posta@nj.mpsv.cz
Opava	Bochenkova 2712/4, 746 01 Opava 1	553 608 111	553 608 110	posta.up@op.mpsv.cz
Ostrava-city	30. dubna 3130/2c, 702 00 Ostrava 2	950 143 511	950 143 537	posta.up@ot.mpsv.cz

Source: Ministry of Labour and Social Affairs

## SELECTED CZECHINVEST PROJECTS IN THE REGION

Name	Location	Investor	Country	Sector	Year
ActiveCall, s.r.o.	Ostrava	Slávia Capital Holding SA	Germany	strategic services centre	2008
Bang & Olufsen, s.r.o.	Ostrava - Kopřivnice	BANG & OLUFSEN	Denmark	electronics, electrotechnics	2004
BATZ CZECH, s.r.o.	Fřýdlant nad Ostravicí	Batz	Spain	manufacture of motor vehicles	2007
Bontrans Group a.s.	Bohumín	KKCG Industry B.V.	Netherlands	engineering	2007
Briggs & Stratton (Czech) Power Products, s.r.o.	Ostrava	Briggs & Stratton	USA	engineering	2006
Brose CZ spol. s r.o.	Vičovice	Brose III	Germany	manufacture of motor vehicles	2007
Brose CZ spol. s r.o.	Kopřivnice	Brose International	Germany	manufacture of motor vehicles	2003
CENTRAL EUROPE AIRCRAFT MAINTENANCE a.s.	Mošnov	CCG	Czech Republic	repair centre	2006
Česká Spořitelna	Ostrava	Erste Bank	Germany	strategic services centre	2008
DBC Coatings CZECH s.r.o.	Mošnov	Daihan Bee Chemicals LTD	South Korea	chemistry, pharmacy	2008
GE Capital (Money) Multiservis, a.s.	Ostrava	GE Capital (Money) Multiservis, a.s.	USA	customer service center	2004
Grupo Antolin Ostrava s.r.o.	Ostrava	Grupo Antolin Irausa S.A.	Spain	manufacture of motor vehicles	2008
Hanwha L&C Czech s.r.o.	Frydek-Místek - Chlebovice	Hanwha L&C Corporation	South Korea	manufacture of motor vehicles	2008
Hayes Lemmerz Alukola, s.r.o.	Kunčice nad O.	Hayes Lemmerz International	USA	manufacture of motor vehicles	1998
HSBC	Ostrava	HSBC Bank plc	United Kingdom	customer contact/call centre, data processing	2007
Hyundai Motor Manufacturing Czech s.r.o.	Nižní Lhoty	Hyundai Motor Company	South Korea	manufacture of motor vehicles	2006
Ivax Pharmaceuticals s.r.o.	Opava-Komárov	Ivax Pharmaceuticals s.r.o.	Israel	chemistry, pharmacy	2008
Mayr-Melnhof Säge Paskov s.r.o.	Paskov	Franz Mayer	Austria	paper, wood processing	2002
OKIN Group, a.s.	Ostrava	OKIN Group, a.s.	Czech Republic	shared services center	2008
PLAKOR CZECH s.r.o.	Mošnov	ARRK	South Korea	manufacture of motor vehicles	2006
Shimano Czech Republic, s.r.o.	Karviná	Shimano	Japan	other	2001
Siemens Automobilové systémy s.r.o.	Frenštát pod Radhoštěm	Siemens Automobilové systémy	Germany	manufacture of motor vehicles	2000
SUNGWOO HITECH s.r.o.	Ostrava - Hrabová	SUNG WOO HITECH	South Korea	manufacture of motor vehicles	2005
Sungwoo Hitech s.r.o.	Ostrava - Hrabová	Sungwoo Hitech s.r.o. II	Korea	manufacture of motor vehicles	2007
Taforge a.s.	Kopřivnice	TATRA a.s.	Czech Republic	manufacture of motor vehicles	2008
VÍTKOVICE HAMMERING a.s.	Moravská Ostrava	VÍTKOVICE HOLDING a.s.	Czech Republic	engineering	2008

Source: CzechInvest

IMPORTANT COMPANIES IN THE DISTRICT ACCORDING TO TURNOVER							
Name of company	Location	Employees	Activity (Sector)	Turnover	Phone	E-mail	WWW
Moravia Steel, a.s.	Třinec - Staré Město	250 - 499	Wholesale of metals and metal ores	64 355	558 537 001, 558 532 000	info@moravia-steel.cz	www.trz.cz, www.moravia-steel.cz
ArcelorMittal Ostrava a.s.	Ostrava - Kunčice	10 000 - and more	Manufacture of basic iron and steel and of ferro-alloys	54 254	595 684 130, 595 681 111	prodej@novahut.cz	www.mittalsteelostrava.com
Třinecké Železářny, a. s.	Třinec - Staré Město	5000 - 9999	Manufacture of basic iron and steel and of ferro-alloys	37 060	558 538 002, 558 531 111	marketing@trz.cz	
OKD, a.s.	Ostrava - Moravská Ostrava	10 000 - and more	Mining and agglomeration of hard coal	23 759	596 262 630, 596 261 111	info@okd.cz	www.okd.cz
Evraz Vítkovice Steel, a.s.	Ostrava - Hulváky	n/a	Manufacture of basic iron and steel and of ferro-alloys	20 478	595 956 306, 595 953 971	jan.polzer@cz.evraz.com	www.vitkovicesteel.com
Visteon - Autopal, s.r.o.	Nový Jičín	4000 - 4999	Manufacture of parts and accessories for motor vehicles and their engines	14 434	556 780 326, 556 780 590	orybnika@visteon.com	www.autopal.cz, www.visteon.cz
Continental Automotive Systems	Frenštát pod Radhoštěm	2000 - 2499	Manufacture of parts and accessories for motor vehicles and their engines	12 523	556 881 111, 556 881 100	siemens.cz@siemens.com	www.siemens.cz, www.siemensvdo.cz
Pharmos, a.s.	Ostrava - Radvanice	500 - 999	Wholesale of pharmaceutical goods	11 724	597 575 211, 597 575 217	info@pharmos.cz	www.pharmos.cz
eD' system Czech, a.s.	Ostrava - Mariánské Hory	100 - 199	Wholesale of computers, computer peripheral equipment and software	11 138	596 665 111, 597 444 111	info@edcz.cz	www.edcz.cz
Asus Czech, s.r.o.	Ostrava - Hrabová	500 - 999	Manufacture of computers and other information processing equipment	8 933	596 766 888, 596 766 111		www.asus.cz, www.asusteam.cz
ŽDB Group, a.s.	Nový Bohumín	n/a	Letting of own property	8 462	596 081 111, 596 012 552	info@zdb.cz	www.zdb.cz, www.viadrus.cz
TCHAS, spol. s r. o.	Ostrava - Poruba	1000 - 1499	General construction of buildings and civil engineering works	7 574	595 690 560, 595 690 511	praha@tchas.cz	www.tchas.cz
OKD, OKK, a.s.	Ostrava-Přívov	1000 - 1499	Manufacture of coke oven products	7 196	596 291 111, 596 292 230	info@okd.cz	okk.okd.cz, www.okd.cz
Hruška, s.r.o.	Ostrava - Martinov	1500 - 1999	Wholesale of fruit and vegetables	6 592	596 948 111, 596 948 232		hruska.info
Ivax Pharmaceuticals, s.r.o.	Opava - Komárov	1000 - 1499	Manufacture of basic pharmaceutical products	6 490	553 641 111, 553 642 512	api@ivax-cz.com	www.ivax-cr.com
Finitrading, a.s.	Třinec - Lyžbice	1 - 5	Wholesale of metals and metal ores	6 274	558 326 187, 558 326 188		
Sochorová válcovna TŽ, a.s.	Třinec - Staré Město	500 - 999	Manufacture of basic iron and steel and of ferro-alloys	5 874	312 643 034, 312 643 098	dana.tomasova@trz.cz	www.trz.cz
BorsodChem Mchz, s.r.o.	Ostrava - Mariánské Hory	500 - 999	Manufacture of other organic basic chemicals	5 626	596 643 221, 596 629 610	posta@bc-mchz.cz	www.bc-mchz.cz
Vitkovice, a.s.	Ostrava - Vítkovice	200 - 249	Distribution and trade of electricity	4 784	595 956 273, 595 911 111	kancelar.praha@vitkovice.cz	www.watrex.com, www.vitkovice.com
AL Invest Břidličná, a.s.	Břidličná	1000 - 1499	Aluminium production	4 695	554 219 251, 554 222 201	info@alinvest.cz	www.alinvest.cz

Source: Albertina Company Monitor

KNOWLEDGE OF FOREIGN LANGUAGES			
LANGUAGE	ALL SKILLS LEVEL (%)	LANGUAGE	ALL SKILLS LEVEL (%)
English	61.9	Spanish	4.2
German	43.9	Polish	48.4
French	6.7	Russian	45.5
Italian	3.5	Nordic languages	1.0

Source: Augur Consulting

LIST OF UNIVERSITIES 2009				
Name of school	WWW	Orientation	Titles awarded	Students
Newport International University	www.newportu.cz	Variety of programmes	BBA, MBA, DBA, Ph.D.	
Ostravská univerzita v Ostravě	www.osu.cz	Variety of programmes	Bc., Mgr., BcA, MgA, Ph.D.	9 143
Slezská univerzita v Opavě	www.slu.cz	Variety of programmes	Bc., Mgr., Ph.D.	7 750
Vysoká škola báňská - Technická univerzita Ostrava	www.vsb.cz	Variety of programmes	Bc., Mgr., Ph.D.	22 308
Vysoká škola podnikání	www.vsp.cz	Informatics, management, internet	Bc., Mgr., Ing.	3 301
Vysoká škola sociálně-správní, Havířov	www.vsss.cz	Public economics and administration, management and social affairs	Bc.	170

Source: Institute for Information on Education



**LIST OF THE BEST OSTRAVA A-CLASS OFFICE PROJECTS**

Project name	EXISTING/PLANNED/UC	Status	Total Office Area (sqm)	Date of completion	Year of Completion
Administrativní centrum ICEC	Existing	Refurbished	3 000	1996 Q2	1996
Axis Office Park Ostrava	Existing	New Build	20 500	phase development 2006-2007	2006-2007
Nová Karolina	Under Construction	New Build	24 635		2011
Nordica Ostrava	Existing	New Build	10 619	2009 Q1	2009
The Orchard	Existing	New Build	33 305	phase development 2007-2009	2007-2009
IQ Ostrava (CTP Office Tower Alpha)	Planned	New Build	25 000		n/a
Jindřich Plaza	Planned	New Build	15 000		n/a

Source: CB Richard Ellis

**RENTS IN INDUSTRIAL PREMISES IN CR REGIONS (EUR/sqm/month)**



Moravia-Silesia Region	3,0-4,0
Note 1: Net effective rents for units ca 4,000 sq m which is average deal size in the market	
Note 2: Premises are immediately available only some regions.	

Source: CB Richard Ellis

**PRIME RENTS IN OFFICE PREMISES IN OSTRAVA (EUR/sqm/month)**



Ostrava	10.50-12.50
„Prime rent definition: Prime Rent – typical ‘achievable’ open market headline rent (can be hypothetical) for a unit of standard size commensurate with demand in each location, of highest quality and specification and in the best location in a market at the survey date. It does not need to be identical to any of the transactions, particularly if the deal flow is very limited or made up of unusual one-off deals“	

Source: CB Richard Ellis

**PRIME RENTS IN SHOPPING CENTRES (EUR/sqm/month)**



Moravia-Silesia Region	20-38
Note: for units ca 100 sqm.	

Source: CB Richard Ellis

**INDUSTRIAL PARKS IN THE CZECH REPUBLIC**



Project	Region	City/ Town	Total Area (warehouse + office)	Year of Completion
CTPark Nový Jičín	Moravia-Silesia	Nový Jičín	23 785	2009
CTPark Ostrava	Moravia-Silesia	Ostrava	144 063	2006-2009
ProLogis Park Ostrava	Moravia-Silesia	Ostrava	66 119	2008
Tulipan Park Logistics Centre	Moravia-Silesia	Ostrava	10 950	2009

Note: Date of completions highlighted in red - we don't know the beginning of completion

Source: CB Richard Ellis

**TEBODIN**  
Consultants & Engineers

**We offer our services to Czech and international clients from private and public sector:**

**Branch offices - Prague, Pardubice, Ostrava**

**We are active in the following markets:**

- Industrial plants
- Commercial & Residential Buildings
- Process Units & Pipelines
- Infrastructure
- Power & Heat

[www.tebodin.com](http://www.tebodin.com)

[info@tebodin.cz](mailto:info@tebodin.cz)

[www.tebodin.cz](http://www.tebodin.cz)

## SELECTED INDUSTRIAL ZONES IN THE MORAVIA-SILESIA REGION

Industrial zone	Area (ha)
Brantice	21,00
Český Těšín - Pod zelenou	12,00
Dolní Benešov - Moravec	222,50
Frýdek-Místek - Chlebovice	12,44
Hladké Životice	29,80
Hlučín - území pro průmysl a podnikání	12,97
Horní Suchá - Důl František	22,00
Karviná - Nové pole	49,00
Kopřivnice - Průmyslový park	83,98
Kopřivnice - Vlčovice	73,40
Krmelín - U hřbitova	11,13
Nošovice	269,00
Osoblaha - průmyslová zóna	21,28
Ostrava - Hrabová	110,00
Ostrava - Mošnov	200,00
Paskov	198,20
Průmyslová zóna Knov - Červený dvůr	42,00
Průmyslová zóna Opava - Vávrovice	15,00
Studénka - průmyslová zóna	26,90
Třinec - Baliny	22,00
Venkovská průmyslová zóna Třanovice	20,03
Vitkov - Průmyslová zóna	17,50

Source: CzechInvest

## IMPORTANT CONTACTS IN THE REGION

**Regional Council**

28. října 117, 70218 Moravská Ostrava  
tel.: +420 599 622 222  
fax: +420 595 622 126  
Email: posta@kr-moravskoslezsky.cz, epodatelna@kr-moravskoslezsky.cz  
URL: www.kr-moravskoslezsky.cz

**City Hall – Ostrava**

Prokešovo náměstí 1803/8, 729 30 Ostrava  
tel.: +420 599 444 444  
fax: +420 599 442 386  
Email: posta@ostrava.cz  
URL: www.ostrava.cz

**CzechInvest - Regional Office**

Nádražní 923/118, 702 00 Ostrava  
tel.: +420 595 198 480-4  
fax: +420 595 198 488  
Email: ostrava@czechinvest.org  
URL: www.czechinvest.org  
Contact persons: Ing. Lenka Matýšková,  
Mgr. Pavel Dominik

**Regional Operational Programme Moravia-Silesia**

Hrabáková 1/1861, 702 00 Ostrava  
tel.: +420 552 303 546  
Email: info@dobra-rada.cz  
URL: www.r-moravskoslezsko.cz

**Regional Development Agency**

Na Jizdárně 7, 702 00 Ostrava 1  
tel.: +420 595 691 211  
fax: +420 595 691 204  
Email: arr@arr.cz  
URL: www.arr.cz

**Business and Innovation Centre**

**- BIC Ostrava s.r.o.**  
Mostárenská 1156/38, 703 00 Ostrava-Vitkovice  
tel.: +420 595 957 458, +420 731 187 857  
fax: +420 595 956 751  
Email: bicova@bicova.cz  
URL: www.bicova.cz

**RPIC-VIP - counselling and project management**

Výstavní 2224/8, 709 00 Ostrava - Mariánské Hory  
tel.: +420 596 616 794, +420 606 748 429  
fax: +420 596 626 917  
Email: rpivicvip@rpic-vip.cz  
URL: www.rpic-vip.cz

**CzechTrade - Regional Information**

**Place - Ostrava**  
Výstavní 8, 709 00 Ostrava-Mariánské Hory  
tel.: +420 597 479 322, +420 724 613 973  
fax: +420 597 479 324  
Email: monika.nemcova@czechtrade.cz  
URL: www.czechtrade.cz

**Chamber of Commerce**

**of Moravia-Silesian Region**  
Výstavní 2224/8, 709 00 Ostrava - Mariánské Hory  
tel.: +420 597 479 333  
fax: +420 597 479 324  
Email: info@khkmsk.cz  
URL: www.khkmsk.cz

**Enterprise Europe Network**

Výstavní 2224/8, 709 00 Ostrava-Mariánské Hory  
tel.: +420 597 479 335  
Email: e.bergerova@khkmsk.cz  
URL: www.khkmsk.cz

**UTILITIES****GAS**

**RWE SMP Net s.r.o.**  
Plynárna 420/3, 702 72 Ostrava  
tel.: 595 142 901  
fax: 595 142 909  
Email: info@rwe-smpnet.cz  
URL: www.rwe-smpnet.cz

**ELECTRICITY**

**ČEZ a.s.**  
28. října 3123/152, 709 02 Ostrava - Mor. Ostrava  
tel.: 840 840 840, 596 671 111  
fax: 596 612 388  
Email: cez@cez.cz  
URL: www.cez.cz

**WATER AND SEWER SYSTEM**

**Ostravské vodárny a kanalizace, a.s.**  
Nádražní 28/3114, 702 00 Ostrava - Mor. Ostrava  
tel.: 597 475 111, 595 152 111  
Email: info@ovak.cz  
URL: www.ovak.cz

**Severomoravské vodovody a kanalizace, a.s.**

28. října 169, 709 45 Ostrava  
tel.: 596 697 111  
fax: 596 624 205  
Email: smvak@smvak.cz  
URL: www.smvak.cz

**HEAT**

**Dalkia Česká republika, a.s.**  
28. října 3123/152, 709 74 Ostrava  
tel.: 596 609 111  
fax: 596 609 300  
Email: info@dalkia.cz  
URL: www.dalkia.cz

**Distep, a.s.**

Ostravská 961, 738 01 Frýdek-Místek  
tel.: 558 442 111, 558 442 119  
fax: 558 442 141  
Email: posta@distep.cz  
URL: www.distep.cz

**Distribuce tepla Třinec, a.s.**

Máchova 1131, 739 61 Třinec  
tel.: 558 333 779  
fax: 558 333 779  
Email: dttas@seznam.cz

**Dotep - CT, s.r.o.**

K. Čapka 373/15, 741 01 Nový Jičín  
tel.: 556 710 275  
fax: 556 710 274  
Email: dotep@dotep.cz  
URL: www.dotep.cz

**Haviřovská teplárenská společnost, a.s.**

Konzumní 298/6a, 736 01 Haviřov-Šumbark  
tel.: 596 411 906  
fax: 596 411 960  
Email: hts@htsas.cz  
URL: www.htsas.cz

**OPATHERM, a.s.**

Horní náměstí 283/58, 746 01 Opava  
tel.: 553 777 555  
fax: 553 623 828  
Email: office@opatherm.mvv.cz

**Tepló Bruntál, a.s.**

Šmilovského 659/6, 792 01 Bruntál  
tel.: 554 774 224  
fax: 554 774 223  
URL: www.teplobr.cz

**Tepló Vratimov spol. s r.o.**

Frydecká 853/57, 739 32 Vratimov  
tel.: 596 732 640

**Tepló Hlučín spol. s r.o.**

Čs. Armády 1263/32, 748 01 Hlučín  
tel.: 595 020 501  
Email: teplohlucin@teplohlucin.cz

# DISTRICT BRUNTÁL



## BASIC DATA

Land Area	1,549 km <sup>2</sup>
-----------	-----------------------

## TOWNS WITH POPULATION OVER 5,000

Krnov	25,211	Rýmařov	8,790
Bruntál	17,494	Vrbno pod Pradědem	5,825

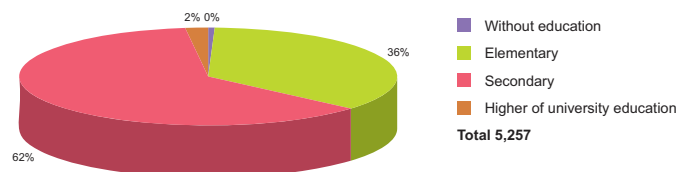
Source: Czech Statistical Office

## ACTUAL SITUATION ON LABOUR MARKET

Population	97,853
Percentage in the total population of Czech Republic (%)	7.8
Population density (person/km <sup>2</sup> )	63.2
Workforce	51,068
Number of job seekers	7,105
Unemployment rate (%)	13.6

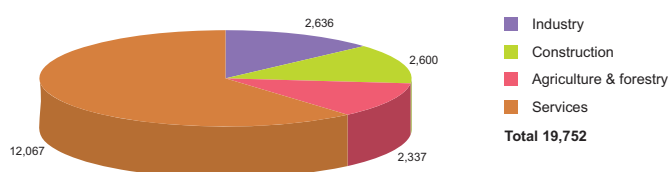
Source: Czech Statistical Office, Ministry of Labour and Social Affairs

## NUMBER OF JOB SEEKERS ACCORDING TO EDUCATION



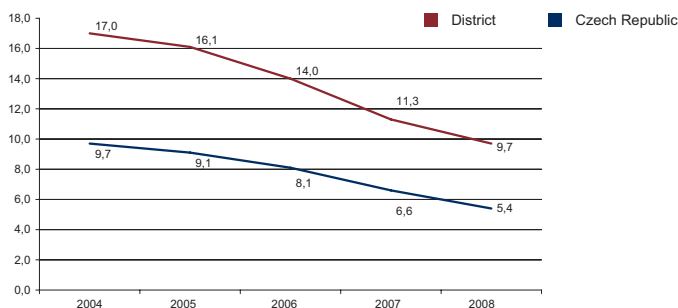
Source: Ministry of Labour and Social Affairs

## NUMBER OF ECONOMIC UNITS ACCORDING TO PREVAILING ACTIVITY



Source: Czech Statistical Office

## UNEMPLOYMENT - 5 YEAR TREND (%/YEAR)



Source: Czech Statistical Office

## FOREIGN DIRECT INVESTMENT

	FDI (CZK)	FDI (EUR)
Bruntál	3 462 873	130 085
CR (total)	2 032 111 185	76 337 761
Prague	1 049 062 899	39 408 824
Moravia-Silesia Average	27 416 794	1 029 932

Source: Czech National Bank

## IMPORTANT COMPANIES IN THE DISTRICT ACCORDING TO TURNOVER

Name of company	Location	Employees	Activity (Sector)	Turnover	www
AL Invest Břidličná, a.s.	Břidličná	1000 - 1499	Aluminium production	4 695	www.alinvest.cz
Kofola, a.s.	Krnov - Pod Bezručovým vrchem	n/a	Letting of own property	3 141	www.kofola.cz
Advanced Plastics, s.r.o.	Vrbno pod Pradědem	500 - 999	Manufacture of plastic products	1 582	www.advplast.cz, www.lph.cz
Marek Vlasák ing.- eMsoft	Krnov - Pod Bezručovým vrchem	n/a	Accounting, book-keeping and auditing activities; tax consultancy	1500 mil. and more	www.emsoft.cz
Karla, spol. s.r.o.	Bruntál	100 - 199	Wholesale of metals and metal ores	1 235	www.karla.cz
Alfa Plastik, a.s.	Bruntál	n/a	Manufacture of plastic packing goods	1 092	www.alfaplastik.cz
RD Rýmařov s. r. o.	Rýmařov	500 - 999	Construction of buildings n.e.c.	1 006	www.rdrymarov.cz
Alfun, a.s.	Bruntál	50 - 99	Wholesale of metals and metal ores	1 578	www.alfun.cz, www.alfun.net
PVO Klub Rýmařov, v.o.s.	Rýmařov	n/a	Restaurants	756	
Krnovské opravny a strojny, s.r.o.	Krnov - Pod Bezručovým vrchem	500 - 999	Manufacture of railway and tramway locomotives and rolling stock	674	www.kos.cz
Copreci CZ, s.r.o.	Dvorce	100 - 199	Retail sale in non-specialized stores	668	
Vladimír Erben - EKO Metalrecycling	Rýmařov	50 - 99	Retail sale in non-specialized stores	500 - 999 mil.	www.erben-ekometal.cz
Sdružené zdravotnické zařízení Krnov,	Krnov - Pod Bezručovým vrchem	1000 - 1499	Hospital activities	500 - 999 mil.	www.szzkrnov.cz
Miko Trade, s.r.o. v likvidaci	Bruntál	n/a	Collection and treatment of other waste	500 - 999 mil.	www.mikotrade.cz
Den Braven Czech and Slovak, s.r.o.	Úvalno	50 - 99	Wholesale of chemical products	500 - 999 mil.	www.denbraven.cz
Katr, a.s.	Stará Ves	250 - 499	Sawmilling and planing of wood; impregnation of wood	419	www.katr.biz
Segezha Packaging, s.r.o.	Úvalno	100 - 199	Manufacture of other articles of paper and paperboard n.e.c.	414	www.korsnas-packaging.cz
Alcom Alval, s.r.o.	Bruntál	20 - 24	Precious metals production	380	www.alcomalval.com
Santa - Trans, s.r.o.	Krnov - Pod Cvilínem	100 - 199	Freight transport by road	362	
Hobes, s.r.o.	Horní Benešov - Luhy	200 - 249	Treatment and coating of metals	361	www.hobes.cz

Source: Albertina Company Monitor



# DISTRICT FRÝDEK-MÍSTEK

## BASIC DATA

Land Area	1,273 km <sup>2</sup>
-----------	-----------------------

## TOWNS WITH POPULATION OVER 5,000

Frýdek-Místek	59,233	Jablunkov	5,692
Třinec	37,657	Bystřice	5,181
Frýdlant nad Oslavicí	9,652		

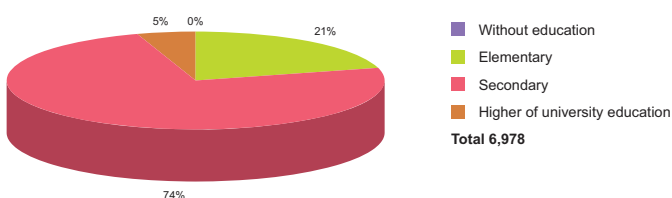
Source: Czech Statistical Office

## ACTUAL SITUATION ON LABOUR MARKET

Population	211,041
Percentage in the total population of Czech Republic (%)	16.9
Population density (person/km <sup>2</sup> )	165.8
Workforce	107,806
Number of job seekers	8,940
Unemployment rate (%)	8.0

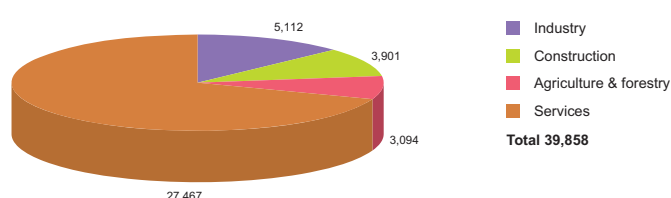
Source: Czech Statistical Office, Ministry of Labour and Social Affairs

## NUMBER OF JOB SEEKERS ACCORDING TO EDUCATION



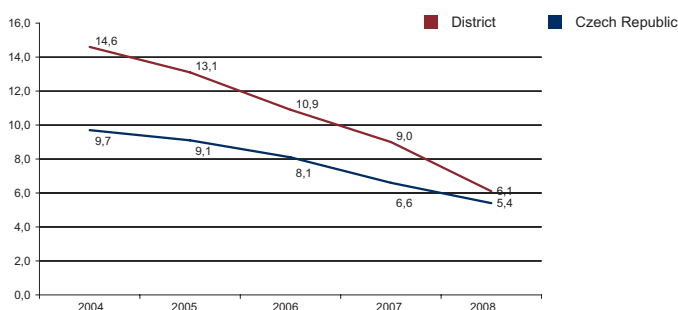
Source: Ministry of Labour and Social Affairs

## NUMBER OF ECONOMIC UNITS ACCORDING TO PREVAILING ACTIVITY



Source: Czech Statistical Office

## UNEMPLOYMENT - 5 YEAR TREND (%/YEAR)



Source: Czech Statistical Office

## FOREIGN DIRECT INVESTMENT

	FDI (CZK)	FDI (EUR)
Frýdek-Místek	24 207 757	909 382
CR (total)	2 032 111 185	76 337 761
Prague	1 049 062 899	39 408 824
Moravia-Silesia Average	27 416 794	1 029 932

Source: Czech National Bank

## IMPORTANT COMPANIES IN THE DISTRICT ACCORDING TO TURNOVER

Name of company	Location	Employees	Activity (Sector)	Turnover	www
Moravia Steel, a.s.	Třinec - Staré Město	250 - 499	Wholesale of metals and metal ores	64 355	www.trz.cz, www.moravia-steel.cz
Třinecké Železářny, a. s.	Třinec - Staré Město	5000 - 9999	Manufacture of basic iron and steel and of ferro-alloys	37 060	
Finitrading, a.s.	Třinec - Lyžbice	1 - 5	Wholesale of metals and metal ores	6 274	
Sochorová válcovna TŽ, a.s.	Třinec - Staré Město	500 - 999	Manufacture of basic iron and steel and of ferro-alloys	5 874	www.trz.cz
Biocel Paskov, a.s.	Paskov	250 - 499	Manufacture of pulp	4 674	www.biocel.cz
Manip Rakovo, s.r.o.	Jablunkov	n/a	Agents involved in the sale of timber and building materials	4 081	www.manip.sk
Válcovny Plechu, a.s.	Frýdek	500 - 999	Manufacture of basic iron and steel and of ferro-alloys	3 608	www.vpfm.cz
Moravia Energo, a.s.	Třinec - Lyžbice	10 - 19	Distribution and trade of electricity	3 369	www.moraviaenergo.cz
Mayr - Melnhof Holz Paskov, s.r.o.	Staříč	200 - 249	Sawmilling and planing of wood; impregnation of wood	3 347	www.mm-holz.com
Lumius, spol. s r.o.	Frýdek	10 - 19	Distribution and trade of electricity	2 793	www.lumius.cz
Energetika Třinec, a.s.	Třinec - Staré Město	250 - 499	Steam and hot water supply	2 327	www.etas.trz.cz
Arcimpex, s.r.o.	Sviadnov	50 - 99	Wholesale of metals and metal ores	1 552	www.arcimpex.cz
Strojmy Třinec, a.s.	Třinec - Staré Město	1000 - 1499	Manufacture of machinery for metallurgy	1 509	www.sv.trz.cz, www.strojmytrinec.cz
Walmart, a.s.	Třinec - Oldřichovice	250 - 499	Manufacture of pharmaceutical preparations	1500 mil. and more	www.walmart.cz
Slévárny Třinec, a.s.	Třinec - Staré Město	500 - 999	Casting of iron	1 356	slevarny.trz.cz, www.slevarny.trz.cz
JAP Trading, s.r.o.	Třinec - Karpentná	50 - 99	Wholesale of metals and metal ores	1 246	www.jap.cz, www.jap.cz/spedex
PR market, s.r.o.	Třinec - Lyžbice	500 - 999	Retail sale in non-specialized stores with food, beverages or tobacco	1 145	www.pmarket.cz, www.ikoruna.cz
Slezan Frýdek - Místek a. s.	Frýdek	1500 - 1999	Finishing of textiles	1000 - 1499 mil.	www.slezanfm.cz
Martek Medical, a.s.	Třinec - Kanská	25 - 49	Wholesale of pharmaceutical goods	1000 - 1499 mil.	www.martekmedical.cz
Expol Trade, s.r.o.	Frýdek	25 - 49	Wholesale of solid, liquid and gaseous fuels and related products	1000 - 1499 mil.	www.expol.cz

# DISTRICT KARVINÁ



## BASIC DATA

Land Area	347 km <sup>2</sup>
-----------	---------------------

## TOWNS WITH POPULATION OVER 5,000

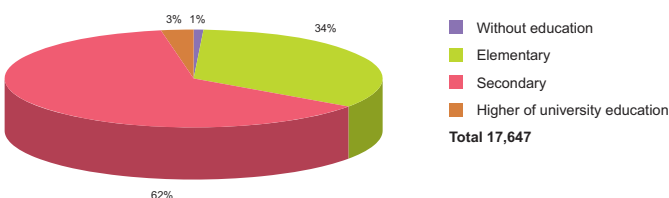
Haviřov	84,033	Bohumín	22,914
Karviná	62,881	Petřvald	7,020
Orlová	32,918	Rychvald	6,875
Český Těšín	25,633	Petrovice u Karviné	5,384

## ACTUAL SITUATION ON LABOUR MARKET

Population	274,889
Percentage in the total population of Czech Republic (%)	22.0
Population density (person/km <sup>2</sup> )	792.2
Workforce	139,851
Number of job seekers	19,542
Unemployment rate (%)	13.7

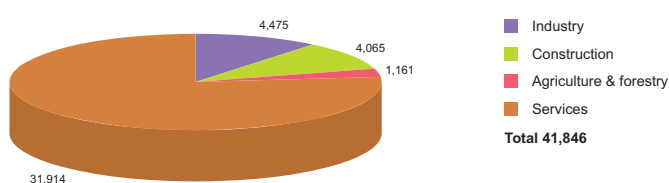
Source: Czech Statistical Office, Ministry of Labour and Social Affairs

## NUMBER OF JOB SEEKERS ACCORDING TO EDUCATION



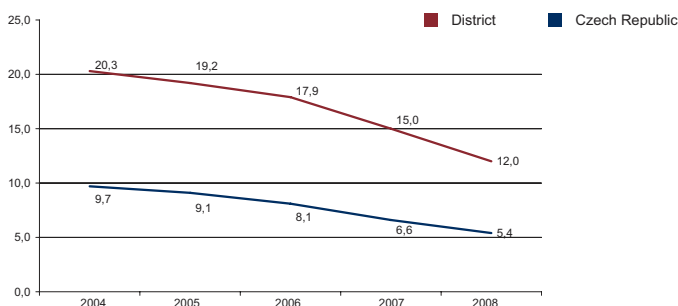
Source: Ministry of Labour and Social Affairs

## NUMBER OF ECONOMIC UNITS ACCORDING TO PREVAILING ACTIVITY



Source: Czech Statistical Office

## UNEMPLOYMENT - 5 YEAR TREND (%/YEAR)



Source: Czech Statistical Office

## FOREIGN DIRECT INVESTMENT

	FDI (CZK)	FDI (EUR)
Karviná	6 041 952	226 970
CR (total)	2 032 111 185	76 337 761
Prague	1 049 062 899	39 408 824
Moravia-Silesia Average	27 416 794	1 029 932

Source: Czech National Bank

## IMPORTANT COMPANIES IN THE DISTRICT ACCORDING TO TURNOVER

Name of company	Location	Employees	Activity (Sector)	Turnover	www
ŽDB Group, a.s.	Nový Bohumín	n/a	Letting of own property	8 462	www.zdb.cz
PCC MORAVA - CHEM s.r.o.	Český Těšín	25 - 49	Wholesale of chemical products	1 879	
Petr Hlaváč	Orlová - Lutyně	n/a	Investigation and security activities	1500 mil. and more	
Lydie Jašková	Karviná - Mizerov	6 - 9	Other retail sale in non-specialized stores	1500 mil. and more	
Karimpex, a.s.	Orlová - Poruba	100 - 199	Retail sale of automotive fuel	1500 mil. and more	www.karimpex.cz
Equus, s.r.o.	Český Těšín	50 - 99	Wholesale of other food, including fish, crustaceans and molluscs	1500 mil. and more	www.equus.cz
Bonatrans Group, a.s.	Nový Bohumín	1000 - 1499	Manufacture of railway and tramway locomotives and rolling stock	1500 mil. and more	www.bonatrans.cz
ArcelorMittal Tubular Products	Karviná - Hranice	500 - 999	Manufacture of steel tubes	1500 mil. and more	www.jakl.cz
Bekaert Petrovice, s.r.o.	Petrovice u Karviné	50 - 99	Manufacture of wire products	1 297	www.bekaert.com
Molnlycke Health Care Klinipro, s.r.o.	Karviná - Staré Město	250 - 499	Manufacture of cotton-wool and dressing materials	1000 - 1499 mil.	www.molnlycke.com
Lama Plus, s.r.o.	Karviná - Nové Město	n/a	Wholesale of other office machinery and equipment	1000 - 1499 mil.	www.lama.cz
Bekaert Bohumín, s.r.o.	Bohumín - Pudlov	100 - 199	Treatment and coating of metals	1000 - 1499 mil.	www.bekaert.com
Kovona System, a.s.	Karviná - Nové Město	250 - 499	Manufacture of other office and shop furniture	969	www.kovona-system.cz
OKD, Rekultivace, a.s.	Haviřov - Prostřední Suchá	250 - 499	Demolition and wrecking of buildings; earth moving	675	www.okd.cz
Shimano Czech Republic, s.r.o.	Karviná - Staré Město	250 - 499	Manufacture of bicycles	654	
POL - Apex, s.r.o.	Hotel. dům Petrovice u Karviné	250 - 499	Demolition and wrecking of buildings; earth moving	634	
Orfa, a.s.	Orlová - Poruba	100 - 199	Advertising	634	www.orfa.info
Trestles, a.s.	Karviná - Mizerov	250 - 499	Manufacture of metal structures and parts of structures	597	www.trestles.cz
Kovona Karviná, a. s.	Karviná - Nové Město	250 - 499	Manufacture of builders' carpentry and joinery of metal	595	www.kovona-karvina.cz
Finidr, s.r.o.	Český Těšín	250 - 499	Publishing of books	579	www.finidr.cz



# DISTRICT NOVÝ JIČÍN

## BASIC DATA

Land Area	918 km <sup>2</sup>
-----------	---------------------

## TOWNS WITH POPULATION OVER 5,000

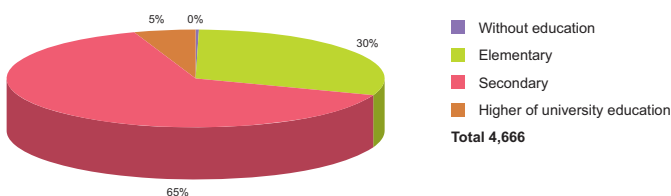
Nový Jičín	26,071	Příbor	8,789
Kopřivnice	23,248	Bílovec	7,519
Frenštát pod Radhoštěm	11,187	Odry	7,344
Studénka	10,220	Fulnek	5,980

## ACTUAL SITUATION ON LABOUR MARKET

Population	152,512
Percentage in the total population of Czech Republic (%)	12.2
Population density (person/km <sup>2</sup> )	166.1
Workforce	78,972
Number of job seekers	8,429
Unemployment rate (%)	10.5

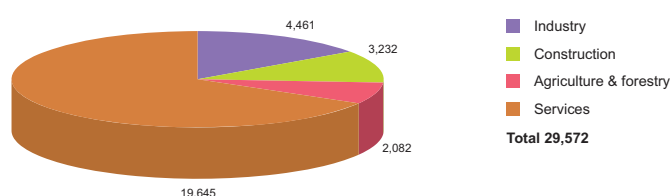
Source: Czech Statistical Office, Ministry of Labour and Social Affairs

## NUMBER OF JOB SEEKERS ACCORDING TO EDUCATION



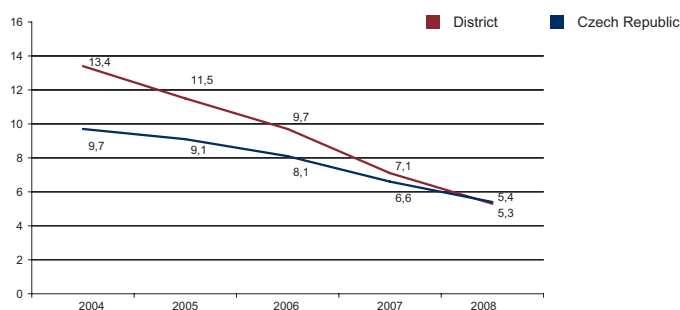
Source: Ministry of Labour and Social Affairs

## NUMBER OF ECONOMIC UNITS ACCORDING TO PREVAILING ACTIVITY



Source: Czech Statistical Office

## UNEMPLOYMENT - 5 YEAR TREND (%/YEAR)



Source: Czech Statistical Office

## FOREIGN DIRECT INVESTMENT

	FDI (CZK)	FDI (EUR)
Nový Jičín	12 966 760	487 106
CR (total)	2 032 111 185	76 337 761
Prague	1 049 062 899	39 408 824
Moravia-Silesia Average	27 416 794	1 029 932

Source: Czech National Bank

## IMPORTANT COMPANIES IN THE DISTRICT ACCORDING TO TURNOVER

Name of company	Location	Employees	Activity (Sector)	Turnover	www
Visteon - Autopal, s.r.o.	Nový Jičín	4000 - 4999	Manufacture of parts and accessories for motor vehicles and their engines	14 434	www.autopal.cz
Continental Automotive Systems	Frenštát pod Radhoštěm	2000 - 2499	Manufacture of parts and accessories for motor vehicles and their engines	12 523	www.siemens.cz
Semperflex Optimit, s.r.o.	Odry	500 - 999	Manufacture of other rubber products	2 240	www.semperflex.com
Agroslužby Nový Jičín - Odbytové	Nový Jičín	n/a	Wholesale of chemical products	2 058	
Primus CE, s.r.o.	Příbor	500 - 999	Other wholesale	1 862	www.primuslaundry.com
Dura Automotive Systems CZ, s.r.o.	Kopřivnice - Vlčovice	250 - 499	Manufacture of parts and accessories for motor vehicles and their engines	1500 mil. and more	www.duraauto.com
Brose CZ, s.r.o.	Kopřivnice - Vlčovice	500 - 999	Manufacture of parts and accessories for motor vehicles and their engines	1500 mil. and more	www.brose.net
Bang & Olufsen, s.r.o.	Kopřivnice - Vlčovice	200 - 249	Letting of own property	1500 mil. and more	www.bang-olufsen.com
Tawesco, s.r.o.	Kopřivnice	500 - 999	Forging, pressing, stamping and roll forming of metal; powder metallurgy	1 471	www.tawesco.cz
Vojenský opravárenský podnik 025 Nový Jičín	Šenov u Nového Jičína	1000 - 1499	Manufacture of weapons and ammunition	1 468	www.vop025.cz
Henniges Automotive s.r.o.	Odry	500 - 999	Manufacture of other rubber products	1 286	www.gdxautomotive.com
Stecomtra, s.r.o.	Nový Jičín	200 - 249	Manufacture of locks and hinges	1 079	
Tafonco, a.s.	Kopřivnice	500 - 999	Casting of iron	1 038	www.tafonco.cz
Tatra Export, s.r.o.	Kopřivnice	1 - 5	Letting of own property	1000 - 1499 mil.	
Tatra, a.s.	Kopřivnice	1500 - 1999	Manufacture of motor vehicles	882	www.tatra.cz
Romotop, s.r.o.	Suchdol nad Odrou	250 - 499	Manufacture of non-electric domestic appliances	747	www.romotop.cz
Kotouč Štramberk, s.r.o.	Ženkla	200 - 249	Manufacture of cement, lime and plaster	566	www.kotouc.cz
NC Line, s.r.o.	Suchdol nad Odrou	250 - 499	General mechanical engineering	522	www.ncline.cz
Tonak, a.s.	Nový Jičín	500 - 999	Milliners' production	520	www.tonak.cz
Lucco, a.s.	Velké Albrechtice	n/a	Other retail sale of new goods in specialized stores	508	

# DISTRICT OPAVA



## BASIC DATA

Land Area	1,126 km <sup>2</sup>
-----------	-----------------------

## TOWNS WITH POPULATION OVER 5,000

Opava	58,923	Vítkov	6,192
Hlučín	14,232	Hradec nad Moravicí	5,371
Kravaře	6,821		

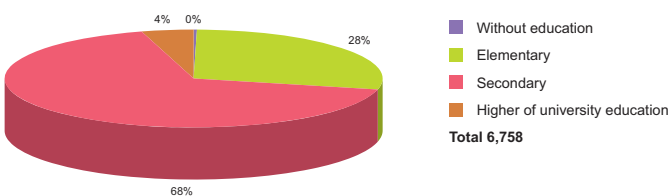
Source: Czech Statistical Office

## ACTUAL SITUATION ON LABOUR MARKET

Population	177,190
Percentage in the total population of Czech Republic (%)	14.2
Population density (person/km <sup>2</sup> )	157.4
Workforce	90,479
Number of job seekers	8,534
Unemployment rate (%)	9.0

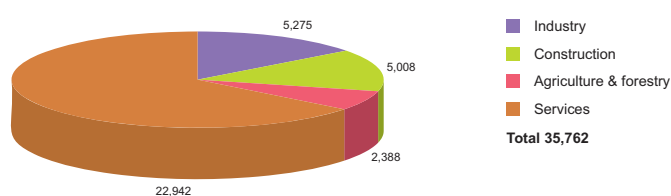
Source: Czech Statistical Office, Ministry of Labour and Social Affairs

## NUMBER OF JOB SEEKERS ACCORDING TO EDUCATION



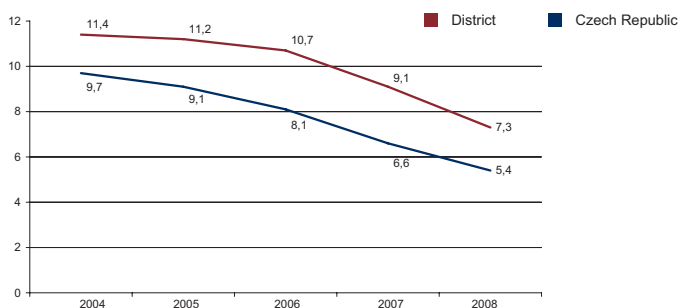
Source: Ministry of Labour and Social Affairs

## NUMBER OF ECONOMIC UNITS ACCORDING TO PREVAILING ACTIVITY



Source: Czech Statistical Office

## UNEMPLOYMENT - 5 YEAR TREND (%/YEAR)



Source: Czech Statistical Office

## FOREIGN DIRECT INVESTMENT

	FDI (CZK)	FDI (EUR)
Opava	8 511 604	319 745
CR (total)	2 032 111 185	76 337 761
Prague	1 049 062 899	39 408 824
Moravia-Silesia Average	27 416 794	1 029 932

Source: Czech National Bank

## IMPORTANT COMPANIES IN THE DISTRICT ACCORDING TO TURNOVER

Name of company	Location	Employees	Activity (Sector)	Turnover	www
Ivax Pharmaceuticals, s.r.o.	Opava - Komárov	1000 - 1499	Manufacture of basic pharmaceutical products	6 490	www.ivax-cr.com
Model Obaly, a.s.	Opava - Předměstí	500 - 999	Manufacture of corrugated paper and paperboard and of containers of paper	3 972	www.modelgroup.com
Argos Elektro, a.s.	Opava - Kateřinky	50 - 99	Wholesale of electrical household appliances and radio and television goods	2 082	www.argos.cz
Svam CS, s.r.o.	Dolní Životice	50 - 99	Wholesale of solid, liquid and gaseous fuels and related products	1500 mil. and more	www.svam.cz
Brano, a.s.	Hradec nad Moravicí	2000 - 2499	Manufacture of locks and hinges	1500 mil. and more	www.brano.cz
Tempo, obchodní družstvo	Opava - Město	500 - 999	Retail sale in non-specialized stores with food, beverages or tobacco predominating	1 189	www.jednota.opava.cz
Techfloor s.r.o.	Opava - Otice	n/a	Other construction work involving special trades	1000 - 1499 mil.	www.techfloor.cz
Petr Lamich - Lama	Opava - Předměstí	10 - 19	Wholesale of solid, liquid and gaseous fuels and related products	1000 - 1499 mil.	
MSA, a.s.	Dolní Benešov	500 - 999	Manufacture of taps and valves	1000 - 1499 mil.	www.msa.cz
Armatury Group, a.s.	Dolní Benešov	200 - 249	Manufacture of taps and valves	1000 - 1499 mil.	www.armaturygroup.cz
Lanex, a.s.	Bolatice	500 - 999	Manufacture of canvas, tents, etc.	991	www.lanex.cz
Ferram, a.s.	Opava - Město	200 - 249	Wholesale of metals and metal ores	941	www.ferram.cz
FAU s. r. o.	Opava - Město	25 - 49	Wholesale of solid, liquid and gaseous fuels and related products	856	www.fau.cz
Witzenmann Opava, s.r.o.	Opava	250 - 499	Treatment and coating of metals; general mechanical engineering	702	www.witzenmann.cz
Silagra CZ, a.s.	Opava Předměstí	50 - 99	Manufacture of prepared animal feeds	700	www.silagra.cz
Jatka - Kurka, s.r.o.	Otice	n/a	Production and preserving of meat	690	www.jatkyotice.cz
TQM - holding, s.r.o.	Opava - Předměstí	250 - 499	Freight transport by road	676	www.tqm.cz
KSR Industrial, s.r.o.	Opava - Předměstí	n/a	Letting of own property	660	
Linaset, a.s.	Budišov nad Budišovkou	500 - 999	Manufacture of plastic components for productive consumption	645	www.linaset.cz
Akzo Nobel Coatings CZ, a.s.	Opava - Komárov	100 - 199	Manufacture of paints, varnishes and similar coatings, printing ink and mastics	520	www.balakom.cz



## DISTRICT OSTRAVA-CITY

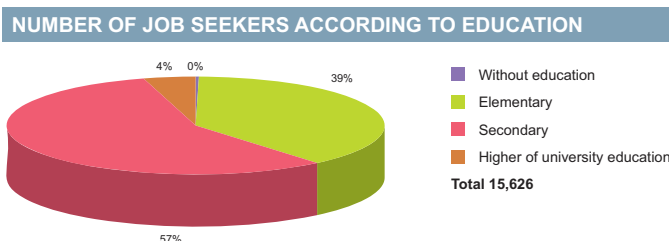
BASIC DATA	
Land Area	214 km <sup>2</sup>

TOWNS WITH POPULATION OVER 5,000	
Ostrava	308,374
Vratimov	6,712
Šenov	5,658

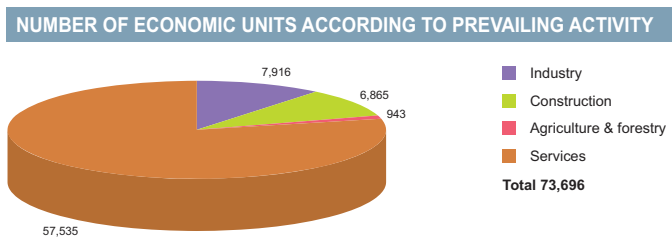
Source: Czech Statistical Office

ACTUAL SITUATION ON LABOUR MARKET	
Population	336,777
Percentage in the total population of Czech Republic (%)	26.9
Population density (person/km <sup>2</sup> )	1,573.7
Workforce	173,254
Number of job seekers	18,856
Unemployment rate (%)	10.6

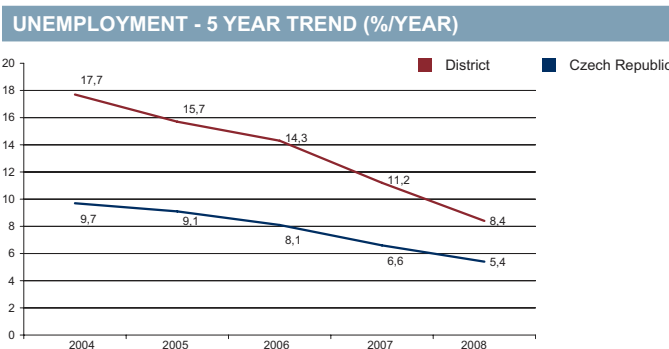
Source: Czech Statistical Office, Ministry of Labour and Social Affairs



Source: Ministry of Labour and Social Affairs



Source: Czech Statistical Office



Source: Czech Statistical Office

**FOREIGN DIRECT INVESTMENT**

	FDI (CZK)	FDI (EUR)
Ostrava-city	109 309 817	4 106 304
CR (total)	2 032 111 185	76 337 761
Prague	1 049 062 899	39 408 824
Moravia-Silesia Average	27 416 794	1 029 932

Source: Czech National Bank

**IMPORTANT COMPANIES IN THE DISTRICT ACCORDING TO TURNOVER**

Name of company	Location	Employees	Activity (Sector)	Turnover	www
ArcelorMittal Ostrava a.s.	Ostrava - Kunčice	10 000 - and more	Manufacture of basic iron and steel and of ferro-alloys	54 254	www.mittalsteelostrava.com
OKD, a.s.	Ostrava - Moravská Ostrava	10 000 - and more	Mining and agglomeration of hard coal	23 759	www.okd.cz
Evraz Vítkovice Steel, a.s.	Ostrava - Hulváky	n/a	Manufacture of basic iron and steel and of ferro-alloys	20 478	www.vitkovicesteel.com
Pharmos, a.s.	Ostrava - Radvanice	500 - 999	Wholesale of pharmaceutical goods	11 724	www.pharmos.cz
eD <sup>2</sup> system Czech, a.s.	Ostrava - Mariánské Hory	100 - 199	Wholesale of computers, computer peripheral equipment and software	11 138	www.edcz.cz
Asus Czech, s.r.o.	Ostrava - Hrabová	500 - 999	Manufacture of computers and other information processing equipment	8 933	www.asus.cz
TCHAS, spol. s r. o.	Ostrava - Poruba	1000 - 1499	General construction of buildings and civil engineering works	7 574	www.tchas.cz
OKD, OKK, a.s.	Ostrava-Přívov	1000 - 1499	Manufacture of coke oven products	7 196	www.okd.cz
Hruška, s.r.o.	Ostrava - Martinov	1500 - 1999	Wholesale of fruit and vegetables	6 592	hruska.info
BorsodChem Mchz, s.r.o.	Ostrava - Mariánské Hory	500 - 999	Manufacture of other organic basic chemicals	5 626	www.bc-mchz.cz
Vitkovice, a.s.	Ostrava - Vítkovice	200 - 249	Distribution and trade of electricity	4 784	www.watrex.com
DHL Express (Czech Republic), s.r.o.	Ostrava - Přívov	1000 - 1499	Activities of other transport agencies	4 311	www.dhl.cz
ČEZ Distribuční služby, s.r.o.	Moravská Ostrava	2000 - 2499	Manufacture of electricity distribution and control apparatus	4 167	www.cezdistribuce.cz
ČEZ Logistika, s.r.o.	Moravská Ostrava	200 - 249	Wholesale of other machinery for use in industry, trade and navigation	4 055	www.cezlogistika.cz
Vonet CR, s.r.o.	Ostrava - Poruba	50 - 99	Wholesale of tobacco products	3 841	www.vonet.cz
OKD, Doprava, a.s.	Moravská Ostrava	1500 - 1999	Transport via railways	3 504	www.okd-doprava.cz
CZECH-KARBON s.r.o.	Moravská Ostrava	6 - 9	Distribution and trade of electricity	3 437	www.czechkarbon.cz
SMP Net, s.r.o.	Ostrava Moravská Ostrava	25 - 49	Distribution and trade of gaseous fuels through mains	3 358	www.rwe-smpnet.cz
ODS - Dopravní stavby Ostrava, a.s.	Ostrava-Jih - Zábřeh	n/a	Construction of bridges, overhead motorways, tunnels and pedestrian subways	3 142	www.ods-dso.cz
VVT - Vítkovice Válcovna Trub, a.s.	Ostrava - Vítkovice	500 - 999	Manufacture of steel tubes	2 944	www.tube.cz, www.trubky.cz