

OLOMOUC REGION

DISTRICT JESENÍK
DISTRICT OLOMOUC
DISTRICT PROSTĚJOV
DISTRICT PŘEROV
DISTRICT ŠUMPERK



ABOUT REGION

The Olomouc Region stretches from central Moravia across the Jeseníky mountains north up to the frontier of Poland. It borders with the regions of Moravia-Silesia, Zlín, South Moravia and Pardubice. The region is divided among five districts: Jeseník, Olomouc, Prostějov, Přerov and Šumperk. Its area is 5,267 km², 6.7 % of the national territory, making it the 8th largest region in the country.

As of H1 2009 there are 642,080 inhabitants (6.1 % of the population of the Czech Republic, the 6th most populated region in the country). Its 397 communities make up for 6.4 % of all communities in the country. Olomouc, the regional capital with a population of 100,168 is the 5th largest city in the Czech Republic. There are 13 towns and cities with populations exceeding 5,000 in the region.

Protected landscape areas include the Jeseníky Mountains, Litovelské Pomoraví and Hranická propast and they belong to the most valuable natural monuments. The most visited castles are Bouzov, Helfštýn, Šternberk, Náměšť na Hané or Velké Losiny. A number of folklore organizations take care of preserving the local tradition in the Haná region, taking part in various festivals. Svatý Kopeček at Olomouc is an important pilgrimage venue.

The Jeseníky Mountains form about a third of the region's territory in its northern part. There are good conditions for skiing, cross country and alpine, as well as for summer outdoor activities. There are over 70 biking paths in the region.

The urban sanctuaries in the region are at Olomouc and Lipník nad Bečvou. A 35 meter high pillar of Saint Trinity in Olomouc City is the only regi-

onal landmark registered on the UNESCO list of the world heritage but the historic paper mill in Velké Losiny is also trying to obtain the registration. Local spas are also of great importance for tourism. Jeseník was among the first of several places in the world applying hydrotherapy. Other spas in the region are Lipová lázně, Teplice nad Bečvou, Velké Losiny and Bludov.

The second oldest university in the Czech Republic, Univerzita Palackého in Olomouc, with its seven colleges, is the largest university in the region. Studies available there include medicine, theology, philosophy, law, pedagogy and sports. Possibilities to study information and some of the natural sciences make up somewhat for the deficiency of technical studies. A branch of Vysoká škola báňská (Mining University) in Šumperk is oriented mostly on studies in the line of machinery. As for private universities there is Vysoká škola logistiky (Logistics University) in Přerov and Moravská vysoká škola (Moravian University) oriented mainly on informatics and management.

Farming provides for more than the average share of the regional GDP. But overall Garment, machinery and electronics industries are of the utmost importance. There are clusters in the car making and garment industries, as well as nanotechnologies and information technologies in the Olomouc Region.

As further development potential is concerned, there is fertile soil in the Olomouc Region, good railway connections, the second oldest university in the country, clean air, a large number of historic landmarks, many folklore festivals, mountain areas usable for tourism throughout the year, and a large network of biking trails.

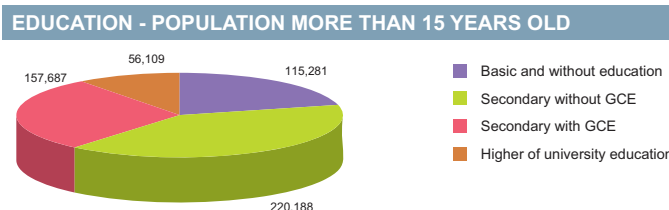
BASIC DATA	
Land Area	5,267 km ²

ACTUAL SITUATION ON LABOUR MARKET	
Population	642,080
Percentage in the total population of Czech Republic (%)	6.1
Population density (person/km ²)	121.9
Workforce	323,076
Number of job seekers	31,769
Unemployment rate (%)	9.6

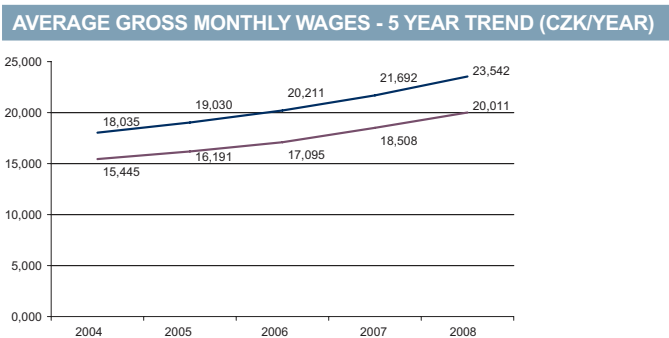
Source: Czech Statistical Office, Ministry of Labour and Social Affairs

NUMBER OF ECONOMIC UNITS ACCORDING TO PREVAILING ACTIVITY	
Total	135,028
Industry	18,707
Construction	16,506
Agriculture & forestry	10,672
Services	88,590

Source: Czech Statistical Office



Source: Czech Statistical Office



Source: Czech Statistical Office

Region	TOTAL		Per capita	
	mIn. CZK	mIn. EUR	Total CZK	Total EUR
Olomouc	164 655	6 602	257 069	9 258
Average GDP for Czech regions	252 161	10 110	341 989	13 711
Share in GDP of the Czech Republic	5%			

Source: Czech Statistical Office

AVERAGE GROSS MONTHLY WAGES - 5 YEAR TREND										
Year	2004		2005		2006		2007		2008	
	CZK	EUR	CZK	EUR	CZK	EUR	CZK	EUR	CZK	EUR
Olomouc	15,445	484	16,191	544	17,095	603	18,508	667	20,011	802
Average for Czech Republic	18,035	565	19,030	639	20,211	713	21,692	781	23,542	944

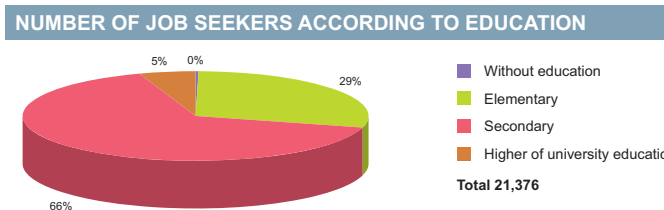
Source: Czech Statistical Office

ADMINISTRATIVE BREAKDOWN	
Number of districts	5
Number of municipalities	398
of that, number of towns	30

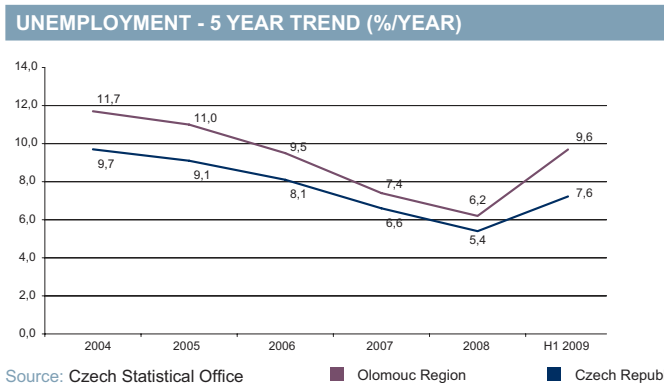
Source: Czech Statistical Office

NUMBER OF EMPLOYEES AND GROSS MONTHLY WAGES IN MANUFACTURING ACCORDING TO NACE CLASSIFICATION		
	Number of employees	Wages (EUR)
Manufacturing	53,192	825
Man. of food products, beverages and tobacco products	4,046	834
Man. of chemical, chemical products, pharmaceuticals, and chemical fibres	992	927
Man. of rubber and plastic products	1,736	742
Man. of basic metals and fabricated metal products	8,238	831
Man. and repairs of machinery and equipment	10,450	923
Man. of electrical and optical equipment	12,847	801
Man. of transport equipment	4,385	881

Source: Czech Statistical Office



Source: Ministry of Labour and Social Affairs



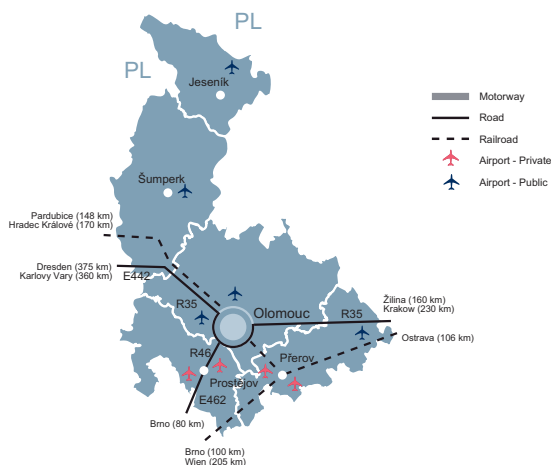
Source: Czech Statistical Office

FOREIGN DIRECT INVESTMENT		
Region	FDI (CZK)	FDI (EUR)
min.	17 940 192	673 937
Olomouc	27 106 670	1 018 282
max.	1 049 062 899	39 408 824
Average	145 150 799	5 452 697

Source: Czech National Bank

LIST OF AIRPORTS	Specification		
	Public/Private	Civil/Military/Varied	International/Intranational
Bohuňovice	Private	Civil	Intranational
Hranice	Public	Civil	Intranational
Mikulovice	Public	Civil	Intranational
Olomouc	Public	Civil	International
Prostějov	Private	Civil	Intranational
Přerov	Private	Civil	International
Přerov	Private	Military	International
Stichovice	Private	Civil	Intranational
Šumperk	Public	Civil	Intranational

Source: Ministry of Transport, Aerobaze.cz



SCHOOL SYSTEM	Number of schools	Number of students	Number of graduates
Secondary schools			
Technical fields	n/a	11 310	2 902
Economic fields	n/a	8 166	2 010
ICT fields	n/a	2 595	651
Higher schools			
Technical fields	n/a	377	110
Economic fields	n/a	155	38
ICT fields	n/a	298	91
Universities			
Technical fields	2	853	184
Economic fields	2	588	158
ICT fields	2	979	126

Source: Institute for Information on Education

LABOUR OFFICE	City	Address	Phone	Fax	E-mail
	Jeseník	Vejdovského 988/4, 779 00 Olomouc 9	950 141 111	950 141 302	olomouc@ol.mpsv.cz
	Olomouc	Karla Čapka 1147/10, 790 01 Jeseník 1	950 121 111	950 121 302	jesenik@je.mpsv.cz
	Prostějov	Plumlovská 458/36, 796 01 Prostějov 1	582 301 811	582 301 899	posta@pv.mpsv.cz
	Přerov	Žerotínovo nám. 168/21, 750 02 Přerov 2	581 272 111	581 738 801	posta@pr.mpsv.cz
	Šumperk	Starobranská 2700/19, 787 01 Šumperk 1	950 164 111	583 213 986	sumperk@su.mpsv.cz

Source: Ministry of Labour and Social Affairs

SELECTED CZECHINVEST PROJECTS IN THE REGION					
Name	Location	Investor	Country	Sector	Year
Austin Detonator Assembly s.r.o.	Skřípov	Austin Detonator s.r.o., Austin Europe B.V.	USA	chemistry, pharmacy	2008
EPCOS s.r.o.	Šumperk	Siemens + Matsushita	Japan/Germany	electronics, electrotechnics	1999
HELLA AUTOTECHNIK NOVA, s.r.o.	Mohelnice	Hella-Autotechnik	Germany	manufacture of motor vehicles	1998
Invensys Appliance Controls s.r.o.	Šternberk	Invensys	Luxembourg	electronics, electrotechnics	1999
Javořice a.s.	Prostějov	Javořice	Czech Republic	paper, wood processing	2003
JUTA a.s.	Dvůr Králové	JUTA	Czech Republic	plastics, rubber	2007
Meopta - optika, s.r.o.	Přerov	Meopta optika	Czech Republic	biotechnology, medical equipment	2006
Miele technika s.r.o.	Uničov	Miele	Germany	electronics, electrotechnics	2002
Mora Aerospace, a.s.	Hlubočky - Mariánské Údolí	Mora Aerospace	USA	manufacture of motor vehicles	2003
Olympus Medical Products Czech s.r.o.	Přerov	Olympus TC	Japan	biotechnology, medical equipment	2007
Olympus Service Facility Czech, s.r.o.	Přerov	Olympus	Japan	repair centre	2003
Pramet Tools, s.r.o.	Šumperk	Pramet Scandinavia AB	Sweden	other	2006
PRECHEZA a.s.	Přerov	AGROFERT HOLDING	Czech Republic	chemistry, pharmacy	2005
Rigips, s.r.o.	Lipník nad Bečvou	Saint-Gobain	France	chemistry, pharmacy	2008
Siemens Elektromotory s.r.o.	Mohelnice	Siemens Elektromotory	Germany	manufacture of motor vehicles	2002
Schneider Logistics Europe s.r.o.	Olomouc	Schneider Logistics Europe BV	USA	shared services center	2004
Timken Česká republika s.r.o.	Olomouc	Torrington	USA/Netherlands	manufacture of motor vehicles	2000
TONDACH Česká republika s.r.o.	Hranice	Tondach ČR s.r.o.	Austria	other	2007
Toray ostatní Central Europe s.r.o.	Prostějov	Toray	Japan	other	1998
Wienerberger cihelna Jezernice, spol. s r.o.	Jezernice	Wienerberger International	Netherlands	other	2004

Source: CzechInvest

IMPORTANT COMPANIES IN THE REGION ACCORDING TO TURNOVER							
Name of company	Location	Employees	Activity (Sector)	Turnover	Phone	E-mail	WWW
Siemens Elektromotory, s.r.o.	Mohelnice	3000 - 3999	Manufacture of electric motors, generators and transformers	10 651	583 433 150, 583 471 111		www.siemens.com
Miele technika, s.r.o.	Uničov	250 - 499	Manufacture of electric domestic appliances	4 336	585 007 541, 585 007 511	info@miele.cz	www.miele.cz
Oděvní podnik, a.s.	Prostějov	4000 - 4999	Manufacture of other outerwear	3 377	582 311 408, 582 311 111	export@op-profashion.cz	www.op-profashion.cz
OP papírna, s.r.o.	Olšany	n/a	Manufacture of paper and paperboard	2 536	739 609 282, 739 609 281	oppapirna@delfortgroup.com	www.vitejte.cz/objekt.php?oid=1893&j=cz
Femax, a.s.	Hranice I - Město	100 - 199	Wholesale of metals and metal ores	2 433	581 830 111, 581 299 850	femax@femax.cz	www.femax.cz
Cement Hranice, a.s.	Hranice I - Město	100 - 199	Manufacture of cement	2 319	581 829 111, 581 829 415	cement@cement.cz	www.cement.cz
Lindab-Astron s.r.o.	Přerov I - Město	250 - 499	Manufacture of metal structures and parts of structures	2 316	581 250 210, 581 250 222	info@astron.biz	www.astron-haly.cz
Tondach Česká republika, s.r.o.	Hranice I - Město	500 - 999	Retail sale in non-specialized stores	2 073	581 673 240, 581 673 332	info@tondach.cz	www.tondach.cz
Precheza, a.s.	Přerov I - Město	n/a	Manufacture of basic chemicals	1 998	581 252 111, 581 252 261	precheza@precheza.cz	www.precheza.cz
Mora Moravia, s. r. o.	Hlubočky - Mariánské Údolí	500 - 999	Manufacture of non-electric domestic appliances	1 943	244 104 519, 585 165 600	prodej@mora.cz	www.mora.cz
Pramet Tools, s.r.o.	Šumperk	250 - 499	Manufacture of tools	1 683	583 381 260, 583 381 111	pramet.info.cz@pramet.com	
Mora Aerospace, a.s.	Hlubočky - Mariánské Údolí	500 - 999	Manufacture of aircraft and spacecraft	1 624	585 128 111, 585 128 144	moraerospace@honeywell.com	
Meopta - optika, s.r.o.	Přerov I - Město	2500 - 2999	Manufacture of optical instruments and photographic equipment	1 600	581 241 111, 581 243 550	meopta@meopta.com	www.meopta.cz
Železo Hranice, s.r.o.	Hranice I - Město	50 - 99	Wholesale of metals and metal ores	1500 mil. a více	581 698 457, 581 698 441	zelezo-hranice@zelezo-hranice.cz	www.zelezo-hranice.cz
Železárný-Annahütte, s.r.o.	Prostějov	100 - 199	Wire drawing	1500 mil. a více	582 344 382, 582 340 053	jednatel@annahutte.cz	www.annahutte.cz
VOP - 026 Šternberk, s.p.	Šternberk	500 - 999	Manufacture of machinery for mining, quarrying and construction	1500 mil. a více	585 083 120, 585 083 111	vop026@vop.cz	www.vop.cz
Unex, a.s.	Uničov - Brničko	500 - 999	Manufacture of machinery for mining, quarrying and construction	1500 mil. a více	585 071 111	marketing@unex.cz	www.unex.cz
Transcargo, s.r.o.	Hranice I - Město	6 - 9	Wholesale of solid, liquid and gaseous fuels and related products	1500 mil. a více	581 602 957, 573 505 220	info@transcargo.cz	www.transcargo.cz
Torrol logistic, s.r.o.	Přerov I - Město	1 - 5	Wholesale of solid, liquid and gaseous fuels and related products	1500 mil. a více	581 703 247, 581 703 248	torrol@torrol.cz	
Thau Nguyen Van	Jeseník	1 - 5	Retail sale in non-specialized stores	1500 mil. a více			

Source: Albertina Company Monitor

KNOWLEDGE OF FOREIGN LANGUAGES			
LANGUAGE	ALL SKILLS LEVEL (%)	LANGUAGE	ALL SKILLS LEVEL (%)
English	61.0	Spanish	5.1
German	44.1	Polish	11.0
French	7.4	Russian	47.8
Italian	0.7	Nordic languages	1.5

Source: Augur Consulting

LIST OF UNIVERSITIES 2009				
Name of school	WWW	Orientation	Titles awarded	Students
Moravská vysoká škola Olomouc	www.mvso.cz	Economics and management	Bc.	673
Univerzita Palackého v Olomouci	www.upol.cz	Variety of programmes	Bc., Mgr., MUDr., Ph.D., PhDr.	20 250
Vysoká škola logistiky	www.vslg.cz	Logistics, transport infrastructure	Bc., Mgr.	905

Source: Institute for Information on Education

RENTS IN INDUSTRIAL PREMISES IN CR REGIONS (EUR/sqm/month)

Olomouc Region	3,75-4,25
Note 1: Net effective rents for units ca 4,000 sq m which is average deal size in the market	
Note 2: Premises are immediately available only some regions.	

Source: CB Richard Ellis

PRIME RENTS IN SHOPPING CENTRES (EUR/sqm/month)

Olomouc Region	25-35
Note: for units ca 100 sqm.	

Source: CB Richard Ellis

CBRE
 CELESTIAL GROUP
 224 814 060
 www.cbrcz.cz
INDUSTRIAL PARKS IN THE CZECH REPUBLIC

Project	Region	City/ Town	Total Area (warehouse + office)	Year of Completion
VGP Park Olomouc	Olomouc	Olomouc	26 213	2008-2009

Source: CB Richard Ellis

CBRE
 CELESTIAL GROUP
 224 814 060
 www.cbrcz.cz
SELECTED INDUSTRIAL ZONES IN THE OLOMOUC REGION

Industrial zone	Area (ha)
Litovel	20,00
Olomouc - Holic - Keplerova	17,00
Olomouc - Chválkovice	15,50
Olomouc - Přikopy	44,87
Olomouc - Šlechtitelů	16,80
Prostějov - Sektor G	40,00
Šumperk - Průmyslová zóna	16,60
Technologický park Olomouc	46,68
Uničov - Průmyslová zóna	34,40
Velká Bystřice - U Makra	26,00
Zábřeh	22,00

Source: CzechInvest

IMPORTANT CONTACTS IN THE REGION**Regional Council**

Jeremenkova 40a, 779 11 Olomouc
 tel.: 585 508 111
 fax: 585 508 813
 Email: posta@kr-olomoucky.cz
 URL: www.kr-olomoucky.cz

City Hall - Olomouc

Horní náměstí, 779 11 Olomouc
 tel.: 585 513 111, 585 510 111
 fax: 585 513 433
 Email: infocentrum@olomouc-tourism.cz
 URL: www.olomoucko.cz

CzechInvest - Regional Office

Jeremenkova 40 B, 772 00 Olomouc
 tel.: 587 332 186, 587 332 187
 fax: 587 332 195
 Email: olomouc@czechinvest.org
 Contact persons: Ing. Pavlína Slepíčková,
 Ing. Lenka Gondová

Regional Agency for Development of the Middle Moravia

Horní nám. 5, 772 00 Olomouc
 tel.: 585 228 698
 fax: 585 228 581
 Email: rarsm@rarsm.cz
 URL: www.rarsm.cz

Regional Consulting & Information Place - RPIC - EKONOMSERVIS Přerov s.r.o.

Blahoslavova 72/4, 750 02 Přerov
 tel.: 581 204 397-8
 fax: 581 204 397
 Email: rpice@ekonomservis.cz
 URL: www.ekonomservis.cz
 Contact person: Ing. František Schröpfer

CzechTrade - Regional Information Place - Přerov

Generála Štefánika 8, 750 02 Přerov
 tel.: 581 299 728, 724 613 029
 fax: 581 299 729
 Email: prerov-czechtrade@komora.cz
 Contact person: Andrea Kubáčková

Regional Economic Chamber – Olomoucký kraj

Jeremenkova 40B, 772 00 Olomouc
 tel.: 587 332 067, 602 708 246
 fax: 587 332 066
 Email: stachova@khkok.cz
 URL: http://www.khkok.cz
 Contact person: Ing. Eva Stachová

UTILITIES**GAS****Severomoravská plynárenská, a.s. (for Northern part of the region)**

Plynární 420/3, 702 72 Ostrava
 tel.: 595 142 901
 fax: 595 142 909
 Email: info@nwe-smpnet.cz
 URL: www.nwe-smp.cz

Jihomoravská plynárenská, a.s. (for Southern part of the region)

Plynárenská 499/1, 657 02 Brno
 tel.: 545 579 566
 fax: 545 243 722
 Email: info@rwe-jmpnet.cz
 URL: www.rwe-jmpnet.cz

ELECTRICITY**Severomoravská energetika, a.s. (for Northern part of the region)**

28. října 3123/152, 709 02 Ostrava - Mor. Ostrava
 tel.: 596 671 111
 fax: 596 612 388
 Email: cez@cez.cz
 URL: www.cez.cz

E.ON Česká republika, a.s. (for Southern part of the region)

Lidická 36, 659 44 Brno
 tel.: 840 111 333
 Email: info@eon.cz
 URL: www.eon.cz

WATER AND SEWER SYSTEM**Jesenická vodohospodářská společnost, s.r.o.**

Tovární ul. 202/3, 790 00 Jeseník
 tel.: 584 411 520
 fax: 584 411 376
 Email: jvs@voda-jvs.cz
 URL: www.voda-jvs.cz

Vodovody a kanalizace Prostějov, a.s.

Krapkova 1635/26, 796 01 Prostějov
 tel.: 582 301 011
 fax: 582 301 003
 Email: info@vakpv.cz
 URL: www.vakpv.cz

Středomoravská vodárenská, a.s.

Tovární 41, 772 11 Olomouc
 tel.: 800 100 063
 Email: smv@smv.cz
 URL: www.smv.cz

HEAT**Dalkia Česká republika, a.s. (branch Olomouc)**

Tovární 906/44, 779 00 Olomouc
 tel.: 585 529 111
 fax: 585 231 124
 URL: www.dalkia.cz

EKOLTES Hranice, a.s.

Zborovská 606, 753 01 Hranice
 tel.: 581 615 168, 581 674 400
 fax: 581 674 414
 Email: ekoltes@ekoltes.cz
 URL: www.ekoltes.cz

Městská teplená společnost Litovel, a.s.

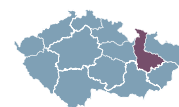
Boskovicova 780/1, 784 01 Litovel
 tel./fax: 585 343 218
 Email: mtslitovel@mtslitovel.cz
 URL: www.mtslitovel.cz

Olterm & TD Olomouc, a.s.

Janského 469/8, 779 00 Olomouc
 tel./fax: 585 423 537
 Email: info@olterm.cz
 URL: www.olterm.cz

Sateza, a.s.

8. května 670/41, 787 01 Šumperk
 tel.: 583 212 459
 fax: 583 214 362
 Email: sateza@sateza.cz
 URL: www.sateza.cz



DISTRICT JESENÍK

BASIC DATA

Land Area	719 km ²
-----------	---------------------

TOWNS WITH POPULATION OVER 5,000

Jeseník	12,209
---------	--------

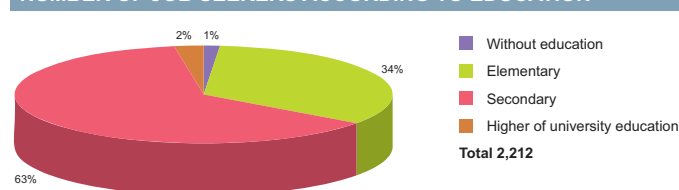
Source: Czech Statistical Office

ACTUAL SITUATION ON LABOUR MARKET

Population	41,395
Percentage in the total population of Czech Republic (%)	6.4
Population density (person/km ²)	57.6
Workforce	20,001
Number of job seekers	2,816
Unemployment rate (%)	13.6

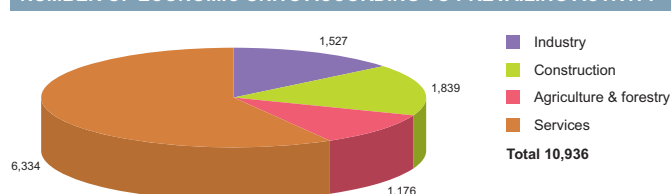
Source: Czech Statistical Office, Ministry of Labour and Social Affairs

NUMBER OF JOB SEEKERS ACCORDING TO EDUCATION



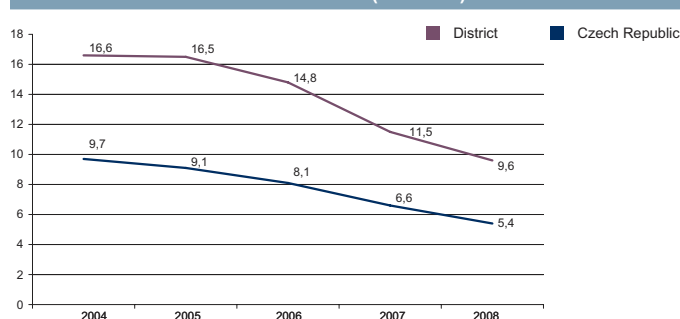
Source: Ministry of Labour and Social Affairs

NUMBER OF ECONOMIC UNITS ACCORDING TO PREVAILING ACTIVITY



Source: Czech Statistical Office

UNEMPLOYMENT - 5 YEAR TREND (%/YEAR)



Source: Czech Statistical Office

FOREIGN DIRECT INVESTMENT

	FDI (CZK)	FDI (EUR)
Jeseník	1 409 137	52 935
CR (total)	2 032 111 185	76 337 761
Prague	1 049 062 899	39 408 824
Olomouc Average	5 421 334	203 656

Source: Czech National Bank

IMPORTANT COMPANIES IN THE DISTRICT ACCORDING TO TURNOVER

Name of company	Location	Employees	Activity (Sector)	Turnover	www
Thau Nguyen Van	Jeseník	1 - 5	Retail sale in non-specialized stores	1500 mil. and more	
Česko - slezská výrobní, a.s.	Zlaté Hory	250 - 499	Manufacture of metal structures and parts of structures	637	www.csv.cz
Řetězárna, a.s.	Česká Ves	250 - 499	Manufacture of fasteners, screw machine products, chain and springs	597	www.retezarna.cz
Trung Thanh Pham	Lipová-lázně	n/a	Other retail sale of new goods in specialized stores	500 - 999 mil.	
Stomix, s.r.o.	Žulová	50 - 99	Manufacture of paints, varnishes and similar coatings, printing ink and mastics	500 - 999 mil.	www.stomix.com
Omya CZ, s.r.o.	Vápenná	100 - 199	Quarrying of stone, sands and gravel sand	500 - 999 mil.	www.omya-dlazdice.cz
Nguyen Quang Hung	Jeseník	n/a	Retail sale in non-specialized stores	500 - 999 mil.	
Astur Jeseník, s.r.o.	Jeseník	n/a	Freight transport by road	329	
Fenix Trading, s. r. o.	Jeseník	6 - 9	Wholesale of other household goods	323	www.fenixgroup.cz
Jana Vítková, s.r.o.	Jeseník	1 - 5	Activities auxiliary to financial intermediation n.e.c.	300 - 499 mil.	www.smenama.jesenik.com
Ondřejovická strojírna, s.r.o.	Zlaté Hory - Ondřejovice	50 - 99	Manufacture of tanks, reservoirs and containers of metal	220	www.ondrstroj.cz
Víden plus, a.s.	Jeseník	50 - 99	Wholesale of other food, including fish, crustaceans and molluscs	200 - 299 mil.	www.viden.cz
Priessnitzovy léčebné lázně, a.s.	Jeseník	250 - 499	Human health activities	200 - 299 mil.	www.priessnitz.cz
Plastkon product, s.r.o.	Mikulovice	100 - 199	Retail sale in non-specialized stores	177	www.plastkon.cz
Fenix, s.r.o.	Jeseník	n/a	Manufacture of central heating radiators and boilers	169	www.fenixgroup.cz
Zemědělské družstvo Agroholding se	Bernartice	n/a	Growing of crops combined with farming of animals (mixed farming)	157	www.agroholding.cz
Semaco tools and software, s.r.o.	Jeseník	25 - 49	Retail sale in non-specialized stores	117	www.semaco.cz
VPO Plast, s.r.o.	Česká Ves	25 - 49	Manufacture of builders' ware of plastic	100 - 199 mil.	www.vpoplast.cz
Technické služby Jeseník a. s.	Jeseník	n/a	Sanitation, remediation and similar activities	100	www.tsje.cz
Slezský kámen, a.s.	Jeseník	200 - 249	Casting of iron	100 - 199 mil.	www.kamen.cz

DISTRICT OLOMOUC

BASIC DATA

Land Area	1,618 km ²
-----------	-----------------------

TOWNS WITH POPULATION OVER 5,000

Olomouc	100,373	Uničov	12,095
Šternberk	13,864	Litovel	10,131

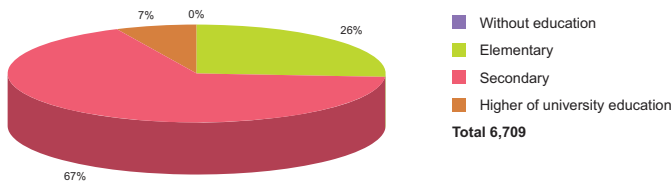
Source: Czech Statistical Office

ACTUAL SITUATION ON LABOUR MARKET

Population	231,295
Percentage in the total population of Czech Republic (%)	36.0
Population density (person/km ²)	143.0
Workforce	121,112
Number of job seekers	10,691
Unemployment rate (%)	8.7

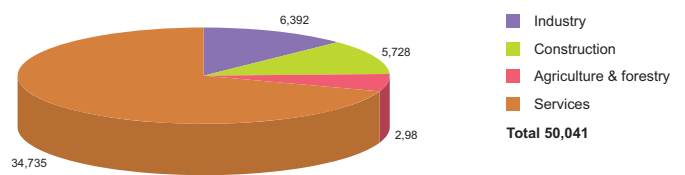
Source: Czech Statistical Office, Ministry of Labour and Social Affairs

NUMBER OF JOB SEEKERS ACCORDING TO EDUCATION



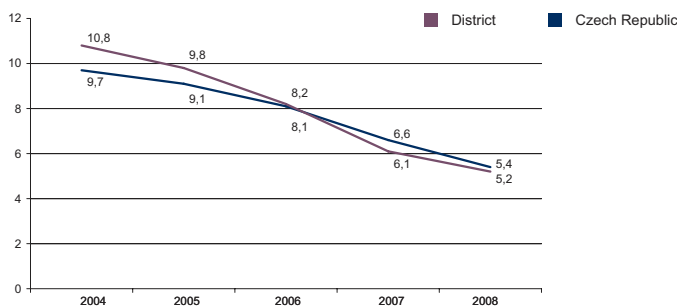
Source: Ministry of Labour and Social Affairs

NUMBER OF ECONOMIC UNITS ACCORDING TO PREVAILING ACTIVITY



Source: Czech Statistical Office

UNEMPLOYMENT - 5 YEAR TREND (%/YEAR)



Source: Czech Statistical Office

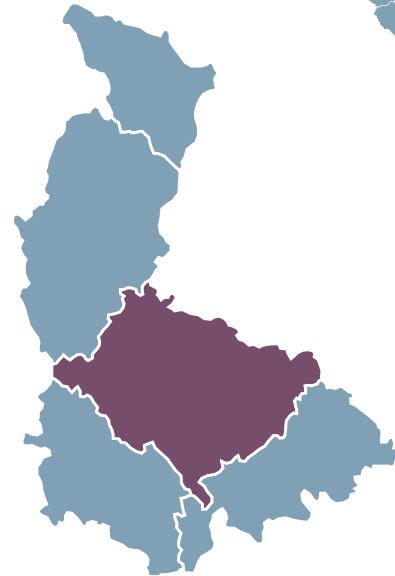
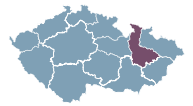
FOREIGN DIRECT INVESTMENT

	FDI (CZK)	FDI (EUR)
Olomouc	8 775 783	329 669
CR (total)	2 032 111 185	76 337 761
Prague	1 049 062 899	39 408 824
Olomouc Average	5 421 334	203 656

Source: Czech National Bank

IMPORTANT COMPANIES IN THE DISTRICT ACCORDING TO TURNOVER

Name of company	Location	Employees	Activity (Sector)	Turnover	www
Miele technika, s.r.o.	Uničov	250 - 499	Manufacture of electric domestic appliances	4336	www.miele.cz
Mora Moravia, s. r. o.	Hlubočky - Mariánské Údolí	500 - 999	Manufacture of non-electric domestic appliances	1 943	www.mora.cz
Mora Aerospace, a.s.	Hlubočky - Mariánské Údolí	500 - 999	Manufacture of aircraft and spacecraft	1 624	
VOP - 026 Šternberk, s.p.	Šternberk	500 - 999	Manufacture of machinery for mining, quarrying and construction	1500 mil. and more	www.vop.cz
Unex, a.s.	Uničov - Brničko	500 - 999	Manufacture of machinery for mining, quarrying and construction	1500 mil. and more	www.unex.cz
Olma, a.s.	Olomouc - Holice	n/a	Operation of dairies and cheese making	1500 mil. and more	www.olma.cz
MJM Litovel, a.s.	Litovel	100 - 199	Manufacture of prepared feeds for farm animals	1500 mil. and more	www.mjm.cz
Milkagro, a.s.	Olomouc	250 - 499	Production and preserving of meat	1500 mil. and more	
M.L.S. Holice, s.r.o.	Olomouc - Holice	500 - 999	Manufacture of electric motors, generators and transformers	1500 mil. and more	www.leroy-somer.com
IRCR Manufacturing, s.r.o.	Uničov	200 - 249	Manufacture of pumps and compressors	1500 mil. and more	www.ircr.cz
Ingersoll-Rand CZ, s.r.o.	Uničov	200 - 249	Manufacture of machinery for the production and use of mechanical power	1500 mil. and more	
Hexpol Compounding s.r.o.	Uničov	100 - 199	Manufacture of other rubber products	1409	www.hpc-cz.com
Prakov, s.r.o.	Olomouc	1 - 5	Wholesale of metals and metal ores	1345	
Granitol, a.s.	Moravský Beroun	250 - 499	Manufacture of plastic plates, sheets, tubes and profiles	1 308	www.granitol.cz
Středomoravská Vodárenská, a.s.	Olomouc - Hodolany	250 - 499	Collection, purification and distribution of water	1 040	www.smv.cz
Timken Česká republika, s.r.o.	Bystrovany	250 - 499	Manufacture of bearings, gears, gearing and driving elements	1000 - 1499 mil.	
Gemo Olomouc, s.r.o.	Olomouc - Lazce	n/a	General construction of buildings and civil engineering works	1000 - 1499 mil.	www.gemo.cz
De - Metal, s.r.o.	Uničov	50 - 99	Wholesale of metals and metal ores	1000 - 1499 mil.	www.demetal.cz
CPM Uničov, a.s.	Uničov - Brničko	100 - 199	Manufacture of machinery for mining, quarrying and construction	1000 - 1499 mil.	www.unex.cz
Panav, a.s.	Senice na Hané	250 - 499	Manufacture of bodies for motor vehicles; manufacture of trailers and semi-trailers	970	www.panav.cz





DISTRICT PROSTĚJOV

BASIC DATA

Land Area	770 km ²
-----------	---------------------

TOWNS WITH POPULATION OVER 5,000

Prostějov	45,675
-----------	--------

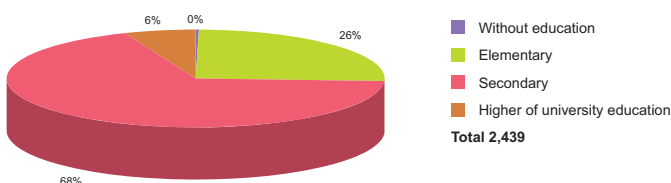
Source: Czech Statistical Office

ACTUAL SITUATION ON LABOUR MARKET

Population	110,122
Percentage in the total population of Czech Republic (%)	17.2
Population density (person/km ²)	143.0
Workforce	55,082
Number of job seekers	3,861
Unemployment rate (%)	6.6

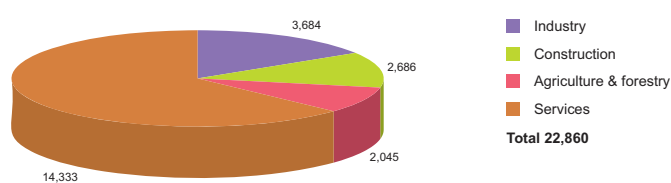
Source: Czech Statistical Office, Ministry of Labour and Social Affairs

NUMBER OF JOB SEEKERS ACCORDING TO EDUCATION



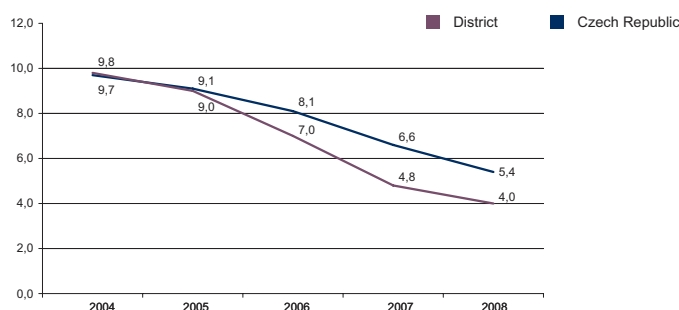
Source: Ministry of Labour and Social Affairs

NUMBER OF ECONOMIC UNITS ACCORDING TO PREVAILING ACTIVITY



Source: Czech Statistical Office

UNEMPLOYMENT - 5 YEAR TREND (%/YEAR)



Source: Czech Statistical Office

FOREIGN DIRECT INVESTMENT

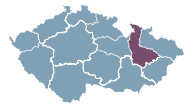
	FDI (CZK)	FDI (EUR)
Prostějov	4 295 017	161 345
CR (total)	2 032 111 185	76 337 761
Prague	1 049 062 899	39 408 824
Olomouc Average	5 421 334	203 656

Source: Czech National Bank

IMPORTANT COMPANIES IN THE DISTRICT ACCORDING TO TURNOVER

Name of company	Location	Employees	Activity (Sector)	Turnover	www
Oděvní podnik, a.s.	Prostějov	4000 - 4999	Manufacture of other outerwear	3 377	www.op-profashion.cz
Železářny-Annahütte, s.r.o.	Prostějov	100 - 199	Wire drawing	1500 mil. and more	www.annahutte.cz
SOUFFLET AGRO a.s.	Prostějov	50 - 99	Wholesale of grain, seeds and animal feeds	1500 mil. and more	www.selekta.cz
Sladovny Soufflet ČR, a.s.	Prostějov	200 - 249	Manufacture of malt	1500 mil. and more	www.slad.cz
Mubea - HZP, s.r.o.	Prostějov	250 - 499	Manufacture of parts and accessories for motor vehicles and their engines	1500 mil. and more	www.mubea.com
Javořice, a.s.	Ptení - Ptenský Dvorek	250 - 499	Sawmilling and planing of wood; impregnation of wood	1500 mil. and more	www.pila-javorice.cz
Makovec, a.s.	Prostějov	n/a	Production, processing and preserving of meat and meat products	1 477	www.makovec.cz
Eastern Sugar Česká Republika, a.s.	Němčice nad Hanou	250 - 499	Manufacture of sugar	1 301	www.easternsugar.cz
DT - Výhybkárna a strojírna, a.s.	Prostějov	500 - 999	Manufacture of railway and tramway locomotives and rolling stock	1 101	www.dtmv.cz
Jan Kolář	Protivanov	1 - 5	Restaurants	1000 - 1499 mil.	
Micos, s.r.o.	Prostějov	200 - 249	Installation of electrical wiring and fittings	731	www.micos.cz
FTL - First Transport Lines, a.s.	Prostějov	250 - 499	Freight transport by road	723	www.ftl.cz
Toray Textiles Central Europe, s.r.o.	Prostějov	250 - 499	Textile weaving	544	www.toray.cz
Tomí - Remont, a.s.	Prostějov	n/a	Construction of motorways, roads, airfields and sport facilities	520	www.tomi-remont.cz
Středomoravská nemocniční, a.s.	Prostějov - Krasice	n/a	Hospital activities	500 - 999 mil.	
Pozemstav Prostějov, a.s.	Prostějov	100 - 199	General construction of buildings and civil engineering works	500 - 999 mil.	www.pozemstav.com
Město Prostějov	Prostějov	250 - 499	General (overall) public service activities	500 - 999 mil.	www.mestopv.cz
Agrop Nova, a.s.	Ptení	200 - 249	Manufacture of veneer sheets; manufacture of plywood, laminboard, particle board	465	www.agrop.cz
Moragro, a.s. v Prostějově	Prostějov	50 - 99	Wholesale of grain, seeds and animal feeds	415	www.moragro.com
Spedition Feico, s.r.o.	Prostějov	n/a	Activities of other transport agencies	366	www.feico.cz

DISTRICT PŘEROV



BASIC DATA	
Land Area	845 km ²

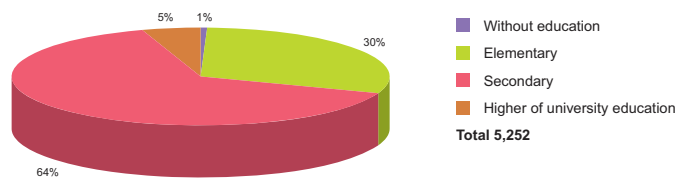
TOWNS WITH POPULATION OVER 5,000			
Přerov	47,037	Lipník nad Bečvou	8,397
Hranice	19,415	Kojetín	6,429

Source: Czech Statistical Office

ACTUAL SITUATION ON LABOUR MARKET	
Population	134,770
Percentage in the total population of Czech Republic (%)	21.0
Population density (person/km ²)	159.5
Workforce	66,365
Number of job seekers	6,853
Unemployment rate (%)	10.2

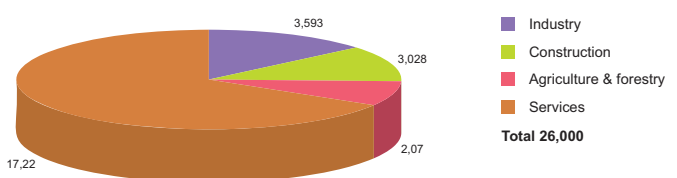
Source: Czech Statistical Office, Ministry of Labour and Social Affairs

NUMBER OF JOB SEEKERS ACCORDING TO EDUCATION



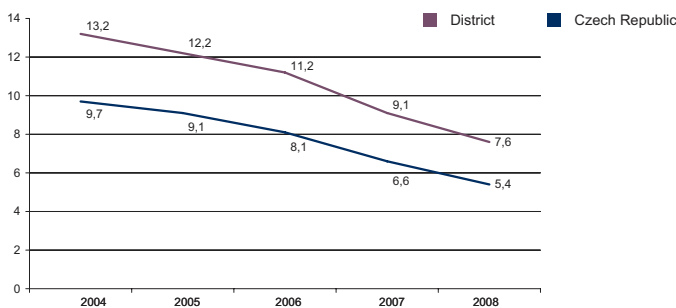
Source: Ministry of Labour and Social Affairs

NUMBER OF ECONOMIC UNITS ACCORDING TO PREVAILING ACTIVITY



Source: Czech Statistical Office

UNEMPLOYMENT - 5 YEAR TREND (%/YEAR)



Source: Czech Statistical Office

FOREIGN DIRECT INVESTMENT

	FDI (CZK)	FDI (EUR)
Přerov	3 932 929	147 743
CR (total)	2 032 111 185	76 337 761
Prague	1 049 062 899	39 408 824
Olomouc Average	5 421 334	203 656

Source: Czech National Bank

IMPORTANT COMPANIES IN THE DISTRICT ACCORDING TO TURNOVER

Name of company	Location	Employees	Activity (Sector)	Turnover	www
Femax, a.s.	Hranice I - Město	100 - 199	Wholesale of metals and metal ores	2 433	www.femax.cz
Cement Hranice, a.s.	Hranice I - Město	100 - 199	Manufacture of cement	2319	www.cement.cz
Lindab-Astron s.r.o.	Přerov I - Město	250 - 499	Manufacture of metal structures and parts of structures	2316	www.astron-haly.cz
Tondach Česká republika, s.r.o.	Hranice I - Město	500 - 999	Retail sale in non-specialized stores	2073	www.tondach.cz
Precheza, a.s.	Přerov I - Město	n/a	Manufacture of basic chemicals	1998	www.precheza.cz
Meopta - optika, s.r.o.	Přerov I - Město	2500 - 2999	Manufacture of optical instruments and photographic equipment	1600	www.meopta.cz
Železo Hranice, s.r.o.	Hranice I - Město	50 - 99	Wholesale of metals and metal ores	1500 mil. and more	www.zelezo-hranice.cz
Transcargo, s.r.o.	Hranice I - Město	6 - 9	Wholesale of solid, liquid and gaseous fuels and related products	1500 mil. and more	www.transcargo.cz
Torrol logistic, s.r.o.	Přerov I - Město	1 - 5	Wholesale of solid, liquid and gaseous fuels and related products	1500 mil. and more	
SSI Schäfer, s.r.o.	Hranice I - Město	500 - 999	Manufacture of metal structures and parts of structures	2221	www.ssi-schaefer.cz
Libor Vlach- Dalija Sped.	Přerov VIII - Henčlov	1 - 5	Freight transport by road	1500 mil. and more	www.dalijasped.cz
Euro - OIL Group, s.r.o.	Přerov I - Město	n/a	Wholesale of solid, liquid and gaseous fuels and related products	1500 mil. and more	
CTP Invest, spol. s r.o.	Humpolec	1000 - 1499	Manufacture of electronic valves and tubes and other electronic components	1500 mil. and more	www.ctpinvest.cz
PSP Engineering, a.s.	Přerov I - Město	500 - 999	Manufacture of machinery for mining, quarrying and construction	1 346	
Cidem Hranice, a.s.	Hranice I - Město	100 - 199	Manufacture of fibre cement	1090	www.cidem.cz
Gambro Czech Republic, s.r.o.	Přerov I - Město	500 - 999	Manufacture of medical and surgical equipment and orthopaedic appliances	657	www.gambro.com
Váhala a, s.r.o. výroba a prodej masných	Hustopeče nad Bečvou	200 - 249	Production of meat and poultrymeat products	614	www.vahala.cz
Moravský Lihovar Kojetín, a.s.	Kojetín I - Město	n/a	Agents involved in the sale of a variety of goods	549	www.lihovar.com
Trumf International, s.r.o.	Přerov	100 - 199	Manufacture of condiments and seasonings	527	www.trumf.cz
PSP Slévárna, a.s.	Přerov I - Město	250 - 499	Casting of steel	522	www.pspslavarna.cz

DISTRICT ŠUMPERK

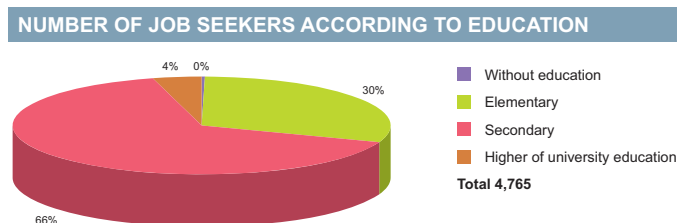
BASIC DATA	
Land Area	1,316 km ²

TOWNS WITH POPULATION OVER 5,000	
Šumperk	27,946
Zábřeh	14,185
Mohelnice	9,700

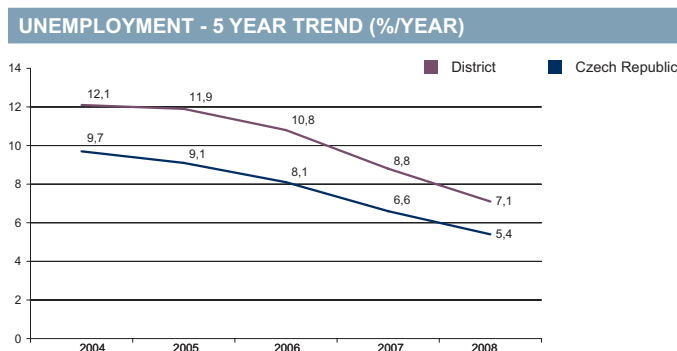
Source: Czech Statistical Office

ACTUAL SITUATION ON LABOUR MARKET	
Population	124,498
Percentage in the total population of Czech Republic (%)	19.4
Population density (person/km ²)	94.6
Workforce	60,517
Number of job seekers	7,550
Unemployment rate (%)	12.1

Source: Czech Statistical Office, Ministry of Labour and Social Affairs

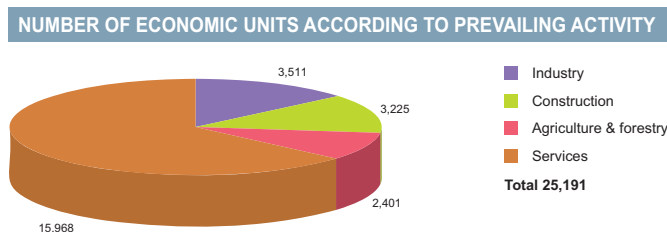


Source: Ministry of Labour and Social Affairs



Source: Czech Statistical Office

IMPORTANT COMPANIES IN THE DISTRICT ACCORDING TO TURNOVER					
Name of company	Location	Employees	Activity (Sector)	Turnover	www
Siemens Elektromotory, s.r.o.	Mohelnice	3000 - 3999	Manufacture of electric motors, generators and transformers	10 651	www.siemens.com
OP papírna, s.r.o.	Olšany	n/a	Manufacture of paper and paperboard	2536	
Pramet Tools, s.r.o.	Šumperk	250 - 499	Manufacture of tools	1683	
Olšanské papírny, a.s.	Zábřeh - Lukavice	500 - 999	Manufacture of paper and paperboard	1500 mil. and more	www.olpa.cz
Hella Autotechnik Nova, s.r.o.	Mohelnice	500 - 999	Manufacture of lighting equipment and electric lamps	1500 mil. and more	www.hella.cz
Pars nova, a.s.	Šumperk	500 - 999	Manufacture of railway and tramway locomotives and rolling stock	1320	www.parsnova.cz
Klein & Blažek s. r. o.	Štítý	500 - 999	Manufacture of parts and accessories for motor vehicles and their engines	1 022	www.kleibl.cz
Epocos, s.r.o.	Šumperk	500 - 999	Manufacture of other electrical equipment n.e.c.	1000 - 1499 mil.	www.epocos.com
Roman Mazák - Nuget	Šumperk	50 - 99	Non-specialized wholesale of food, beverages and tobacco	883	www.nuget.cz
Fortex - AGS, a.s.	Šumperk	250 - 499	General construction of buildings and civil engineering works	808	www.fortex-ags.cz
Svaz výrobců mléka, a.s.	Šumperk	1 - 5	Wholesale of dairy produce, eggs and edible oils and fats	717	
MEP Postřelmov, a.s.	Postřelmov	250 - 499	Manufacture of electricity distribution and control apparatus	600	www.mep.cz
Vápenka Vitošov, s.r.o.	Leština	200 - 249	Manufacture of lime	500 - 999 mil.	www.vapenka-vitosov.cz
Tele-Fonika Kabely CZ, s.r.o.	Zábřeh	n/a	Retail sale in non-specialized stores	500 - 999 mil.	
Sulko s. r. o.	Zábřeh	250 - 499	Manufacture of builders' ware of plastic	500 - 999 mil.	www.sulko.cz
Opro CZ, k.s.	Šumperk	20 - 24	Wholesale on a fee or contract basis	500 - 999 mil.	
Hella Autotechnik, s.r.o.	Mohelnice	100 - 199	Manufacture of other special purpose machinery n.e.c.	500 - 999 mil.	
CeramTec Czech Republic, s.r.o.	Šumperk	250 - 499	Manufacture of other technical ceramic products	500 - 999 mil.	www.ceramtec.cz
Jednota, společenství Zábřeh	Zábřeh	250 - 499	Retail sale in non-specialized stores with food, beverages or tobacco predominating	486	
Úsovsko a. s.	Úsov	250 - 499	Growing of crops combined with farming of animals (mixed farming)	448	www.usovsko.cz



Source: Czech Statistical Office

FOREIGN DIRECT INVESTMENT		
	FDI (CZK)	FDI (EUR)
Šumperk	8 693 804	326 589
CR (total)	2 032 111 185	76 337 761
Prague	1 049 062 899	39 408 824
Olomouc Average	5 421 334	203 656

Source: Czech National Bank