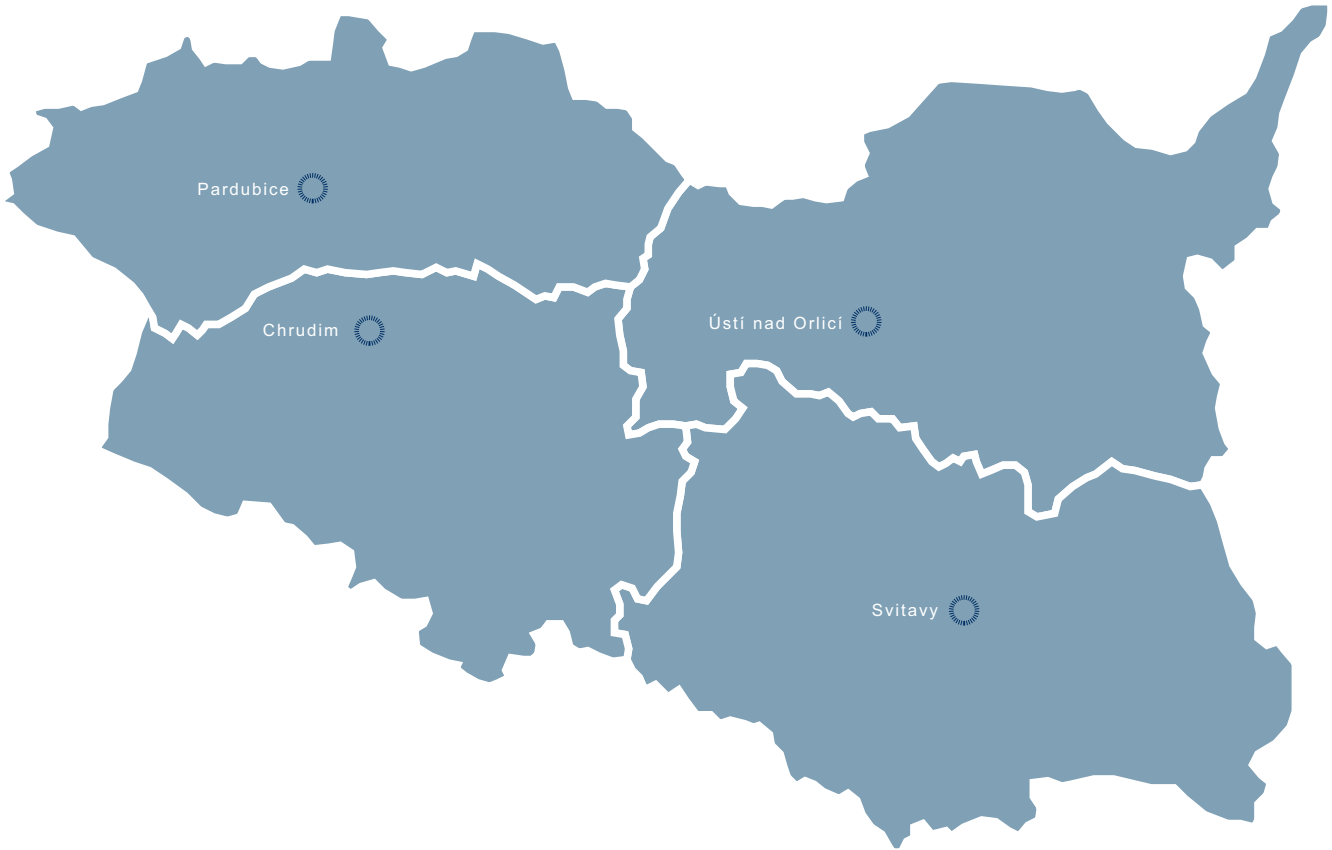


# PARDUBICE REGION

DISTRICT CHRUDIM  
 DISTRICT PARDUBICE  
 DISTRICT SVITAVY  
 DISTRICT ÚSTÍ NAD ORLICÍ



## ABOUT REGION

The Pardubice Region is located in Eastern Bohemia; a short part of its boundary in the Orlické Mountains lies along the state boundary with Poland. It neighbors with the regions Hradec Králové, Central Bohemia, South Bohemia, South Moravia, Olomouc and Vysočina.

The region is divided into four districts: Chrudim, Pardubice, Svitavy and Ústí nad Orlicí. Its area is 4,518 km<sup>2</sup> or 5.7 % of the national territory. The region is the 10th largest in the country. As of H1 2009 there were 515,040 inhabitants which make it the 12th most populated among regions of the Czech Republic. There are 452 communities (7.2 % of all communities in the country, 6th place among all regions).

The city of Pardubice, the regional capital, has a population of 88,316. There are 17 towns and cities with a population exceeding 5,000 in the region. Large protected landscape areas, Orlické hory, Železné hory and a part of Žďárské vrchy, are located in the territory of the Pardubice region and they are frequently visited by tourists. The vicinity of reservoir Seč is most visited in summer; otherwise lots of facilities serve mainly for purposes of congressional tourism. Agricultural tourism, focusing on horse breeding, is also very popular in the Pardubice region. Velká pardubická Steeplechase and Zlatá přilba (Golden Helmet) dirt track race are sporting events of international importance, taking place in Pardubice every year.

The historic downtowns in Pardubice, Moravská Třebová and Litomyšl were declared urban sanctuaries. The castle in Litomyšl is the only landmark in the region placed on UNESCO list of world heritage. In spite of this, the region is lagging behind all others in some areas of tourism, i.e. number of accommodation facilities, their capacities and the average number of nights a visitor spends in the region.

Univerzita Pardubice, with five colleges, is the largest university in the region. The colleges of transportation and chemical technologies are focused on traditional disciplines and their importance exceeds the regional level. The faculty of restoration in Litomyšl is the only one in the country.

Farming has a more than average share in the regional GDP, mainly as plant production is concerned. Electrotechnics, chemistry and machinery firms are the most important employers in the region. Industrial plastics and nanotechnology clusters have been created in the region. The potential of the region lies in: the tradition of the chemical industry, the focus of local universities on local lines of business, the location of the city of Pardubice on I. and III. railway corridors, the finishing of the motorway D11 and the building of a new speed communication further on, development of agro - tourism, natural and cultural landmarks and eventual attempts to extend transportation by riverboats.

**BASIC DATA**

Land Area	4,518 km <sup>2</sup>
-----------	-----------------------

**ACTUAL SITUATION ON LABOUR MARKET**

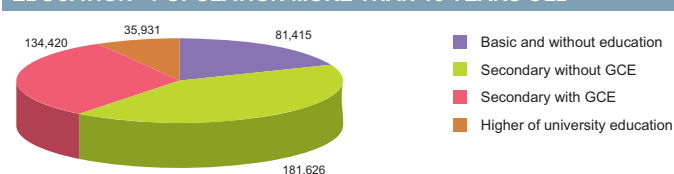
Population	515,040
Percentage in the total population of Czech Republic (%)	4.9
Population density (person/km <sup>2</sup> )	114.0
Workforce	277,801
Number of job seekers	21,497
Unemployment rate (%)	7.6

Source: Czech Statistical Office, Ministry of Labour and Social Affairs

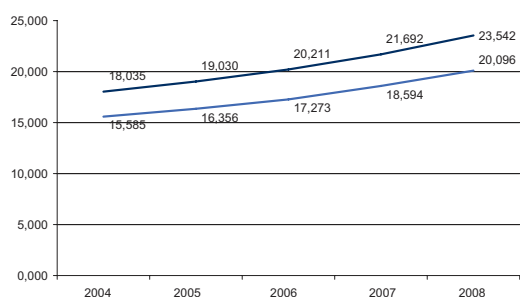
**NUMBER OF ECONOMIC UNITS ACCORDING TO PREVAILING ACTIVITY**

<b>Total</b>	<b>109,524</b>
Industry	16,185
Construction	13,972
Agriculture & forestry	8,263
Services	70,539

Source: Czech Statistical Office

**EDUCATION - POPULATION MORE THAN 15 YEARS OLD**


Source: Czech Statistical Office

**AVERAGE GROSS MONTHLY WAGES - 5 YEAR TREND (CZK/YEAR)**


Source: Czech Statistical Office

**ADMINISTRATIVE BREAKDOWN**

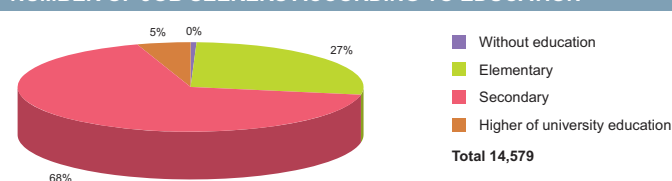
Number of districts	4
Number of municipalities	451
of that, number of towns	35

Source: Czech Statistical Office

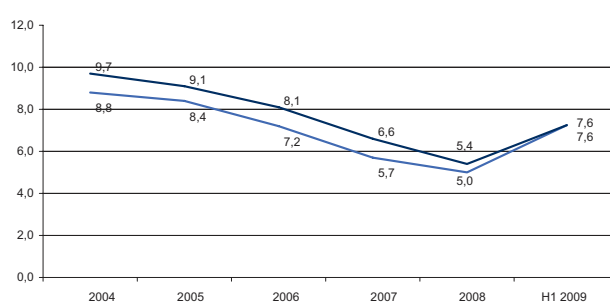
**NUMBER OF EMPLOYEES AND GROSS MONTHLY WAGES IN MANUFACTURING ACCORDING TO NACE CLASSIFICATION**

	Number of employees	Wages (EUR)
<b>Manufacturing</b>	<b>50,010</b>	<b>839</b>
Man. of food products, beverages and tobacco products	3,067	838
Man. of chemical, chemical products, pharmaceuticals, and chemical fibres	3,185	808
Man. of rubber and plastic products	2,023	726
Man. of basic metals and fabricated metal products	4,230	1,064
Man. and repairs of machinery and equipment	8,751	828
Man. of electrical and optical equipment	13,212	781
Man. of transport equipment	6,214	899

Source: Czech Statistical Office

**NUMBER OF JOB SEEKERS ACCORDING TO EDUCATION**


Source: Ministry of Labour and Social Affairs

**UNEMPLOYMENT - 5 YEAR TREND (%/YEAR)**


Source: Czech Statistical Office

**GDP BY REGIONS**

Region	TOTAL		Per capita	
	mIn. CZK	mIn. EUR	Total CZK	Total EUR
Pardubice	147 940	5 931	290 693	10 469
Average GDP for Czech regions	252 161	10 110	341 989	13 711
Share in GDP of the Czech Republic	4%			

Source: Czech Statistical Office

**FOREIGN DIRECT INVESTMENT**

Region	FDI (CZK)	FDI (EUR)
min.	17 940 192	673 937
Pardubice	40 420 358	1 518 421
max.	1 049 062 899	39 408 824
Average	145 150 799	5 452 697

Source: Czech National Bank

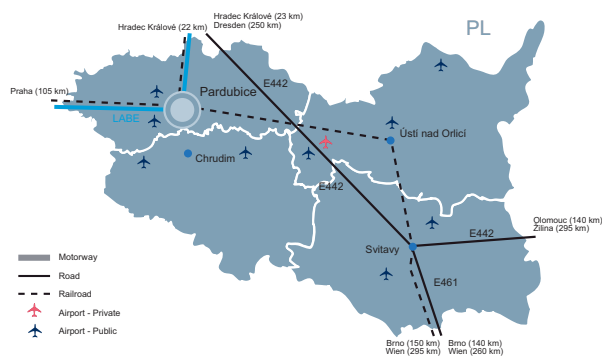
**AVERAGE GROSS MONTHLY WAGES - 5 YEAR TREND**

Year	2004		2005		2006		2007		2008	
	CZK	EUR	CZK	EUR	CZK	EUR	CZK	EUR	CZK	EUR
Pardubice	15,585	488	16,356	549	17,273	609	18,594	670	20,096	806
Average for Czech Republic	18,035	565	19,030	639	20,211	713	21,692	781	23,542	944

Source: Czech Statistical Office

	Specification		
	Public/Private	Civil/Military/Varied	International/Intranational
Chrudim	Public	Civil	Intranational
Moravská Třebová	Public	Civil	Intranational
Pardubice	Public	Civil	International
Pardubice	Public	Military	International
Podhořany	Public	Civil	Intranational
Polička	Public	Civil	Intranational
Skuteč	Public	Civil	Intranational
Ústí nad Orlicí	Public	Civil	Intranational
Vysoké Mýto	Public	Civil	Intranational
Vysoké Mýto	Private	Civil	International
Žamberk	Public	Civil	Intranational

Source: Ministry of Transport, Aerobaze.cz



SCHOOL SYSTEM			
	Number of schools	Number of students	Number of graduates
<b>Secondary schools</b>			
Technical fields	n/a	8 487	1 990
Economic fields	n/a	6 562	1 580
ICT fields	n/a	1 816	459
<b>Higher schools</b>			
Technical fields	n/a	162	85
Economic fields	n/a	268	119
ICT fields	n/a	57	45
<b>Universities</b>			
Technical fields	1	3 237	486
Economic fields	1	1 947	381
ICT fields	1	1 478	229

Source: Institute for Information on Education

LABOUR OFFICE				
City	Address	Phone	Fax	E-mail
Chrudim	Pardubická 310, 537 01 Chrudim 1	469 613 211	469 613 220	posta@cr.mpsv.cz
Pardubice	Boženy Víkové- Kunětické 2011, 530 02 Pardubice 2	466 751 111	466 310 039	uppa@pa.mpsv.cz
Svitavy	Bezručova 2055/13, 568 02 Svitavy 2	461 544 511	461 530 608	svitavy.up@sy.mpsv.cz
Ústí nad Orlicí	17. listopadu 1394, 562 01 Ústí nad Orlicí 1	465 559 111	465 559 720	uradprace@uo.mpsv.cz

Source: Ministry of Labour and Social Affairs

SELECTED CZECHINVEST PROJECTS IN THE REGION					
Name	Location	Investor	Country	Sector	Year
AVX Czech Republic s.r.o.	Lanškroun	AVX	United Kingdom	electronics, electrotechnics	1998
Brück AM spol. s r.o.	Vysoké Mýto	Brück AM spol. s r.o.	Germany	engineering	2008
Iveco Czech Republic, a. s.	Vysoké Mýto	IRISBUS FRANCE	France	manufacture of motor vehicles	2005
JTEKT Automotive Czech Pardubice s.r.o.	Staré Čívce	JTEKT	Japan	manufacture of motor vehicles	2007
KIEKERT-CS, s.r.o.	Přelouč	Kiekert	Germany	engineering	2004
KÖGEL, a. s.	Choceň	KÖGEL Fahrzeugwerke GmbH, Burtenbach, SRN	Germany	manufacture of motor vehicles	2008
KORADO, a.s.	Česká Třebová	KORADO	Czech Republic	metal products	2007
KYB Manufacturing Czech, s.r.o.	Pardubice	Kayaba Industry	Japan	manufacture of motor vehicles	2004
NonStop Recruitment s.r.o.	n.s.	Non stop	United Kingdom	IT, software development	2008
Panasonic Automotive Systems Czech, s.r.o.	Pardubice	Matsushita Electric Industrial Co.	Japan	electronics, electrotechnics	2000
Rieter CZ a.s.	Choceň	Rieter Holding AG	Switzerland	manufacture of motor vehicles	2007
RONAL CR s.r.o.	Pardubice	Ronal	Switzerland	manufacture of motor vehicles	2004
Toyoda Koki Automotive Czech Republic, s.r.o.	Pardubice	Toyoda Machine Works	Japan	manufacture of motor vehicles	2003
VERTEX FABRICS, s.r.o.	Litomyšl	Vertex	France	other	1999
Vigona, a.s.	Svitavy	Fibertex	Denmark	other	2004

Source: CzechInvest

IMPORTANT COMPANIES IN THE REGION ACCORDING TO TURNOVER							
Name of company	Location	Employees	Activity (Sector)	Turnover	Phone	E-mail	WWW
Foxconn CZ, s.r.o.	Pardubice IV - Pardubičky	2000 - 2499	Manufacture of computers and other information processing equipment	88 974	466 056 012, 466 056 111	zamestnani@foxconn.cz	www.foxconn.cz
Iveco Czech Republic, a.s.	Vysoké Mýto - Pražské Předměstí	1500 - 1999	Manufacture of motor vehicles	11 789	465 452 100, 465 451 111	info@karosa.cz	www.karosa.cz
Paramo, a.s.	Pardubice VI - Svítkov	n/a	Manufacture of refined petroleum products	11 243	466 810 375, 466 810 111	paramo@paramo.cz	www.paramo.cz
Saint - Gobain Vertex, s.r.o.	Litomyšl - Nedošín	1000 - 1499	Manufacture of glass fibres	6 743	461 651 104, 461 612 713	vertex@saint-gobain.com	www.vertex.cz
Panasonic Automotive Systems Czech, s.r.	Pardubice VI - Staré Ččivice	1000 - 1499	Manufacture of television and radio transmitters and apparatus for line telephony and line telegraphy	6 291	236 032 511, 467 021 373	info.pascz@eu.panasonic.com	www.panasonic.cz
AVX Czech Republic, s.r.o.	Lanškroun - Žichlínské Předměstí	3000 - 3999	Manufacture of electronic valves and tubes and other electronic components	5 616	465 358 111, 465 358 140	company@avx.cz	www.avxcorp.com
Rieter CZ, a.s.	Ústí nad Orlicí	1500 - 1999	Manufacture of machinery for textile, apparel and leather production	5 303	465 557 131, 465 557 104	rieter.cz@rieter.com	www.rieter.cz
International Power Opatovice, a.s.	Pardubice 2	n/a	Production of electricity	5 232	466 536 030, 466 536 023	info@ipplc.cz	www.ipplc.cz
Kiekert - CS, s.r.o.	Pardubice V - Zelené Předměstí	1000 - 1499	Manufacture of other special purpose machinery and equipment	4 470	468 881 205, 468 881 111	info@kiekert.cz	www.kiekert.cz
Foxconn LCD CZ, s.r.o.	Pardubice IV - Pardubičky	100 - 199	Other wholesale	3 133			
Korado, a.s.	Česká Třebová	500 - 999	Manufacture of central heating radiators and boilers	2 914	465 506 111, 465 506 105	info@korado.cz	www.korado.com
Traffic, a.s.	Pardubice II - Polabiny	n/a	Non-specialized wholesale of food, beverages and tobacco	2 754	466 430 066, 466 944 033	pardubice@traffic.cz	www.traffic.cz
Mlékárna Hlinsko, s.r.o.	Hlinsko - Kouty	250 - 499	Operation of dairies and cheese making	2 652	469 363 121, 469 363 229	mlekarna@tatramleko.cz	www.tatramleko.cz
JIP východočeská, a.s.	Pardubice II - Polabiny	250 - 499	Wholesale of alcoholic and other beverages	2 186	466 300 970	info@jip-napoje.cz	www.jip-napoje.cz
M - Silnice, a.s.	Pardubice III - Bílé Předměstí	500 - 999	Construction of motorways, roads, airfields and sport facilities	2 181	495 862 111, 466 025 249	msilnice08@msilnice.cz	www.msilnice.cz
ETA a. s.	Hlinsko	1000 - 1499	Manufacture of electric domestic appliances	1 945	469 802 111, 800 800 000	eta@eta.cz	www.eta.cz
SOR Libchavy, s.r.o.	Libchavy - Dolní Libchavy	250 - 499	Manufacture of motor vehicles	1 922	465 519 430, 465 519 425	sor@sor.cz	www.sor.cz
Zřud - Masokombinát Polička, a.s.	Kamenec u Poličky	500 - 999	Production and preserving of meat	1 732	461 752 111, 461 721 516	sekretariat@mkp.cz	www.mkp.cz
Isolit - Bravo, s.r.o.	Jablonné nad Orlicí	500 - 999	Manufacture of electric domestic appliances	1 637	465 616 280, 465 616 296	obchod@isolit-bravo.cz	www.isolit-bravo.cz
Schott Electronic Packaging Lanškroun s.	Lanškroun - Žichlínské Předměstí	500 - 999	Manufacture of electronic valves and tubes and other electronic components	1 615	465 350 114, 465 350 111		www.schott.com

Source: Albertina Company Monitor

LIST OF UNIVERSITIES 2009				
Name of school	WWW	Orientation	Titles awarded	Students
Univerzita Pardubice	www.upce.cz	Variety of programmes	Bc., Mgr., Ing., Ph.D.	9 424

Source: Institute for Information on Education

KNOWLEDGE OF FOREIGN LANGUAGES			
LANGUAGE	ALL SKILLS LEVEL (%)	LANGUAGE	ALL SKILLS LEVEL (%)
English	73.5	Spanish	7.1
German	46.0	Polish	6.2
French	12.4	Russian	45.1
Italian	6.2	Nordic languages	0.0

Source: Augur Consulting

### RENTS IN INDUSTRIAL PREMISES IN CR REGIONS (EUR/sqm/month)

Pardubice Region	3,5-4,0
Note 1: Net effective rents for units ca 4,000 sq m which is average deal size in the market	
Note 2: Premises are immediately available only some regions.	

Source: CB Richard Ellis

### PRIME RENTS IN SHOPPING CENTRES (EUR/sqm/month)

Pardubice Region	30-40
Note: for units ca 100 sqm.	

Source: CB Richard Ellis



### INDUSTRIAL PARKS IN THE CZECH REPUBLIC

Project	Region	City/ Town	Total Area (warehouse + office)	Year of Completion
CTPoint Pardubice	Pardubice	Pardubice	36 508	n/a
STARZONE	Pardubice	Pardubice	25 210	2008

Source: CB Richard Ellis

### SELECTED INDUSTRIAL ZONES IN THE PARDUBICE REGION

Industrial zone	Area (ha)
Hlinsko	20,00
Chrudim	73,00
Litomyšl - Benátská	29,00
Moravská Třebová - městská průmyslová zóna	11,40
Pardubice - městská průmyslová zóna	70,00
Svitavy - Paprsek	40,00

Source: CzechInvest

### IMPORTANT CONTACTS IN THE REGION

**Regional Council**  
Komenského nám. 125, 532 11 Pardubice  
tel.: 466 026 111  
fax: 466 611 220  
Email: posta@pardubickykraj.cz  
URL: www.pardubickykraj.cz

**City Hall - Pardubice**  
Pernštýnské nám. 1, 530 21 Pardubice  
tel.: 466 859 111  
fax: 466 859 103  
Email: sekretariat@mmp.cz, posta@mmp.cz  
URL: www.mesto-pardubice.cz, www.pardubice.eu

**CzechInvest - Regional Office**  
Administrativní centrum Pardubice, K Vinici 1256, 530 02 Pardubice  
tel.: 466 616 144  
fax: 466 616 702  
Email: pardubice@czechinvest.org  
Contact persons: Ing. Hana Matějková, Ing. Lenka Přihodová

**Regional Development Agency**  
Karla IV. 42, 530 02 Pardubice  
tel.: 466 053 911  
fax: 466 053 910  
Email: info@rrapk.cz  
URL: www.rrapk.cz

**Regional Consulting & Information Center - RPIC Pce s.r.o.**  
Nová 306, 530 09 Pardubice  
tel.: 466 415 687-9  
fax: 466 415 690  
Email: info@rpicpce.cz  
URL: www.rpicpce.cz  
Contact person: Ing. Vojtěch Černík

**Regional Economic Chamber – Pardubice**  
Karla IV. 42, 530 02 Pardubice  
tel.: 466 612 164, 466 658 002  
fax: 466 613 491  
Email: khkpce@khkpce.cz  
URL: www.khkpce.cz  
Contact persons: Blanka Bizová, Ing. Roman Sodomka, Ph.D.

**Euro Info Center - Pardubice**  
Karla IV. 42, 530 02 Pardubice  
tel.: 466 053 921  
fax: 466 053 910  
Email: eic.pardubice@rrapk.cz  
Contact persons: Lukáš Blažek

#### UTILITIES

**GAS**  
**Východočeská plynárenská, a.s.**  
Pražská ulice 702, 500 04 Hradec Králové  
tel.: 495 060 111, 840 113 355  
fax: 495 532 745  
Email: info@rwe-vcp.cz  
URL: www.vcp.cz

**ELECTRICITY**  
**Východočeská energetika, a.s.**  
Sladkovského 215, 501 03 Hradec Králové  
tel.: 495 841 111, 840 840 840  
fax: 495 842 400  
Email: zakaznicke.centrum@vce.cz  
URL: www.vce.cz

**WATER AND SEWER SYSTEM**  
**Vodovody a kanalizace Pardubice, a.s.**  
Teplého 2014, 530 02 Pardubice  
tel.: 466 798 411  
fax: 466 304 643  
Email: info@vakpce.cz  
URL: www.vakpce.cz

**Vodovody a kanalizace Chrudim, a.s.**  
Novoměstská 626, 537 28 Chrudim  
tel.: 469 660 301  
fax: 469 315 286  
Email: vak@vakcr.cz  
URL: www.vakcr.cz

**TEPVOS, s.r.o.**  
Třebovská 287, 562 03 Ústí nad Orlicí  
tel.: 465 519 841  
fax: 465 519 857  
Email: tepvos@tepvos.cz  
URL: www.tepvos.cz

**HEAT**  
**International Power Opatovice, a.s.**  
Opatovice nad Labem, 532 13 Pardubice 2  
tel.: 466 843 111  
fax: 466 536 030  
Email: info@ipplc.cz  
URL: www.ipplc.cz

**Teplárenská společnost Hlinsko, spol. s r.o.**  
Družstevní 1523, 539 01 Hlinsko  
tel.: 469 311 669  
fax: 469 311 453  
Email: teplarsenska@hlinsko.net  
URL: www.pestr.cz



# DISTRICT CHRUDIM

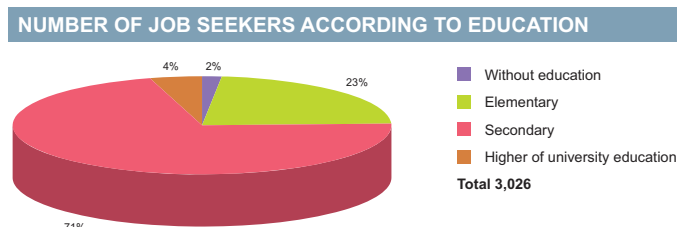
BASIC DATA	
Land Area	1,030 km <sup>2</sup>

TOWNS WITH POPULATION OVER 5,000	
Chrudim	23,379
Hlinsko	10,282
Skuteč	5,318

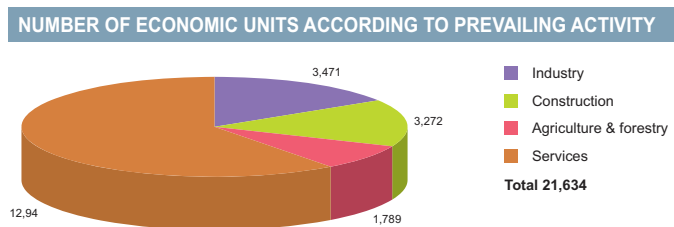
Source: Czech Statistical Office

ACTUAL SITUATION ON LABOUR MARKET	
Population	104,347
Percentage in the total population of Czech Republic (%)	20.3
Population density (person/km <sup>2</sup> )	101.3
Workforce	52,428
Number of job seekers	4,493
Unemployment rate (%)	8.4

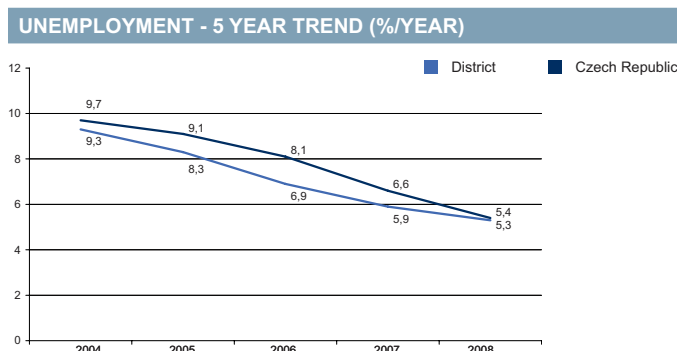
Source: Czech Statistical Office, Ministry of Labour and Social Affairs



Source: Ministry of Labour and Social Affairs



Source: Czech Statistical Office



Source: Czech Statistical Office

**FOREIGN DIRECT INVESTMENT**

	FDI (CZK)	FDI (EUR)
Chrudim	5 053 120	189 824
CR (total)	2 032 111 185	76 337 761
Prague	1 049 062 899	39 408 824
Pardubice Average	10 105 090	379 605

Source: Czech National Bank

**IMPORTANT COMPANIES IN THE DISTRICT ACCORDING TO TURNOVER**

Name of company	Location	Employees	Activity (Sector)	Turnover	www
Mlékárna Hlinsko, s.r.o.	Hlinsko - Kouty	250 - 499	Operation of dairies and cheese making	2 652	www.tatramleko.cz
ETA a. s.	Hlinsko	1000 - 1499	Manufacture of electric domestic appliances	1 945	www.eta.cz
Holcim (Česko) , a. s., člen koncernu	Prachovice	250 - 499	Manufacture of cement	1500 mil. and more	www.holcim.cz
Kovolis Hedvíkov, a.s.	Třemošnice - Hedvíkov	500 - 999	Casting of light metals	1 034	www.kovolis-hedvikov.cz
BASF Stavební hmoty Česká republika,	Chrudim IV	200 - 249	Manufacture of articles of concrete, plaster and cement	969	www.basf-cz.cz
Dako - cz, a.s.	Třemošnice	250 - 499	Manufacture of railway and tramway locomotives and rolling stock	842	www.dako-cz.cz
Prezipp, s.r.o.	Chrudim IV	100 - 199	General construction of buildings and civil engineering works	780	www.prezipp.cz
Siag CZ, s.r.o.	Chrudim IV	100 - 199	Manufacture of metal structures and parts of structures	689	www.siag.cz
Jednota, spotřební družstvo Hlinsko	Hlinsko	n/a	Retail sale in non-specialized stores with food, beverages or tobacco predominating	642	www.jednotahlinsko.cz
Electropoli - galVIA, s.r.o.	Třemošnice	250 - 499	Treatment and coating of metals	447	www.electropoli.com
Proman, s.r.o.	Chrudim III	25 - 49	Retail trade, except of motor vehicles and motorcycles	444	www.proman.cz
Connex Východní Čechy, a.s.	Chrudim III	250 - 499	Municipal mass transport	438	www.veolia-transport.cz
Era - pack, s.r.o.	Chrudim III	25 - 49	Manufacture of machinery for food, beverage and tobacco processing	419	www.erapack.cz
Nika Chrudim, s.r.o.	Chrudim IV	n/a	Maintenance and repair of motor vehicles	412	www.nika-chrudim.cz
Kožešnická, a.s.	Hlinsko	200 - 249	Manufacture of interior ready-made products (except carpets)	337	www.kozesnicka.cz
A - Z Prezip, a.s.	Chrudim IV	10 - 19	Construction of buildings n.e.c.	336	www.azprezip.cz
TMT, s.r.o. Chrudim	Chrudim IV	100 - 199	Manufacture of other special purpose machinery and equipment	333	www.tmt.cz
Východočeské plynárenské strojírna, a.s.	Rosice	100 - 199	Manufacture of tanks, reservoirs and containers of metal	305	www.vpsr.cz
Renegade CR, s.r.o.	Chrudim II	1 - 5	Letting of own property	300 - 499 mil.	
Backer Elektro CZ, a.s.	Hlinsko	250 - 499	Manufacture of electric domestic appliances	273	www.backer-elektro.cz





# DISTRICT PARDUBICE

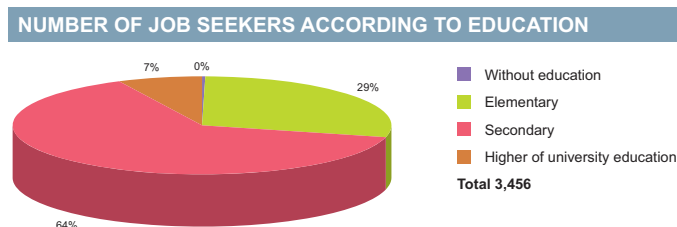
BASIC DATA	
Land Area	889 km <sup>2</sup>

TOWNS WITH POPULATION OVER 5,000	
Pardubice	89,245
Přelouč	8,525
Holice	6,380

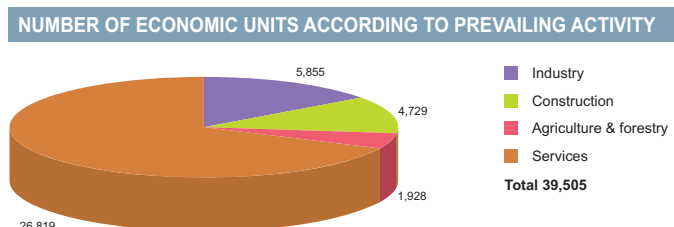
Source: Czech Statistical Office

ACTUAL SITUATION ON LABOUR MARKET	
Population	166,387
Percentage in the total population of Czech Republic (%)	32.3
Population density (person/km <sup>2</sup> )	187.2
Workforce	98,797
Number of job seekers	4,941
Unemployment rate (%)	4.9

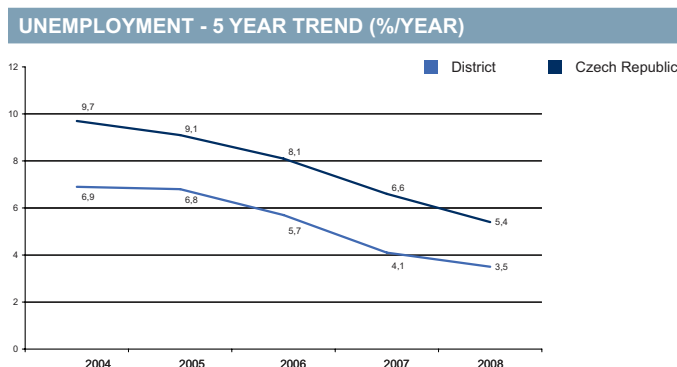
Source: Czech Statistical Office, Ministry of Labour and Social Affairs



Source: Ministry of Labour and Social Affairs



Source: Czech Statistical Office



Source: Czech Statistical Office

**FOREIGN DIRECT INVESTMENT**

	FDI (CZK)	FDI (EUR)
Pardubice	14 288 189	536 746
CR (total)	2 032 111 185	76 337 761
Prague	1 049 062 899	39 408 824
Pardubice Average	10 105 090	379 605

Source: Czech National Bank

**IMPORTANT COMPANIES IN THE DISTRICT ACCORDING TO TURNOVER**

Name of company	Location	Employees	Activity (Sector)	Turnover	www
Foxconn CZ, s.r.o.	Pardubice IV - Pardubičky	2000 - 2499	Manufacture of computers and other information processing equipment	88 974	www.foxconn.cz
Paramo, a.s.	Pardubice VI - Svítkov	n/a	Manufacture of refined petroleum products	11 243	www.paramo.cz
Panasonic Automotive Systems Czech, s.r.o.	Pardubice VI - Staré Čívce	1000 - 1499	Manufacture of television and radio transmitters and apparatus for line telephony	6 291	www.panasonic.cz
International Power Opatovice, a.s.	Pardubice 2	n/a	Production of electricity	5 232	www.ipplc.cz
Kiekert - CS, s.r.o.	Pardubice V - Zelené Předměstí	1000 - 1499	Manufacture of other special purpose machinery and equipment	4 470	www.kiekert.cz
Foxconn LCD CZ, s.r.o.	Pardubice IV - Pardubičky	100 - 199	Other wholesale	3 133	
Traffic, a.s.	Pardubice II - Polabiny	n/a	Non-specialized wholesale of food, beverages and tobacco	2 754	www.traffic.cz
JIP východočeská, a.s.	Pardubice II - Polabiny	250 - 499	Wholesale of alcoholic and other beverages	2 186	www.jip-napoje.cz
M - Silnice, a.s.	Pardubice III - Bílé Předměstí	500 - 999	Construction of motorways, roads, airfields and sport facilities	2 181	www.msilnice.cz
Tonamo, a.s.	Pardubice V - Zelené Předměstí	50 - 99	Wholesale of solid, liquid and gaseous fuels and related products	1500 mil. and more	www.tonamo.cz
Synthesis, a.s.	Pardubice - Semtín	4000 - 4999	Manufacture of basic chemicals	1500 mil. and more	www.synthesis.cz
Pojišťovna České spořitelny, a.s.	Pardubice I - Zelené Předměstí	100 - 199	Life insurance	1500 mil. and more	www.pojistovnacs.cz
Foxconn Technology CZ, s.r.o.	Pardubice IV - Pardubičky	n/a	Other wholesale	1500 mil. and more	
Electrabel, org.složka	Pardubice I - Zelené Předměstí	n/a	Distribution and trade of electricity	1500 mil. and more	
ČSOB Pojišťovna, a.s.	Pardubice I - Zelené Předměstí	500 - 999	Life insurance	1500 mil. and more	www.csobpoj.cz
Czech Tobacco Corporation, a.s.	Pardubice VII - Ohrazenice	1 - 5	Non-specialized wholesale of food, beverages and tobacco	1500 mil. and more	www.ctc-as.cz
Alba, s.r.o.	Dašice v Č.	n/a	Recycling	1 369	www.albarecykling.cz
ZZN Pardubice, a.s.	Pardubice IV - Pardubičky	100 - 199	Manufacture of prepared feeds for farm animals	1 242	www.zzn.cz
Nedcon Bohemia, s.r.o.	Pardubice IV - Drozdice	200 - 249	Manufacture of metal structures and parts of structures	1 141	www.nedcon.com

# DISTRICT SVITAVY



BASIC DATA	
Land Area	1,335 km <sup>2</sup>

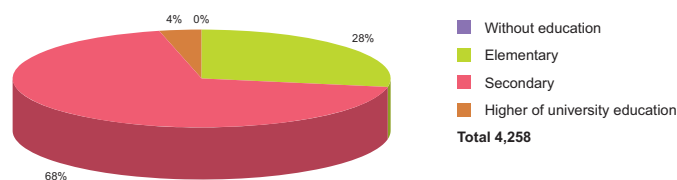
TOWNS WITH POPULATION OVER 5,000			
Svitavy	17,201	Litomyšl	10,072
Moravská Třebová	11,129	Polička	8,924

Source: Czech Statistical Office

ACTUAL SITUATION ON LABOUR MARKET	
Population	104,941
Percentage in the total population of Czech Republic (%)	20.4
Population density (person/km <sup>2</sup> )	78.6
Workforce	54,000
Number of job seekers	5,686
Unemployment rate (%)	10.4

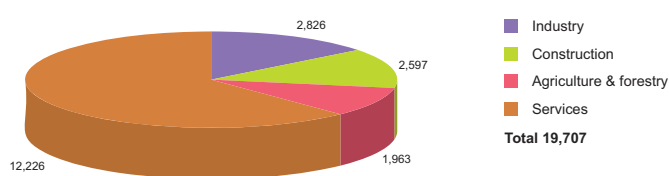
Source: Czech Statistical Office, Ministry of Labour and Social Affairs

## NUMBER OF JOB SEEKERS ACCORDING TO EDUCATION



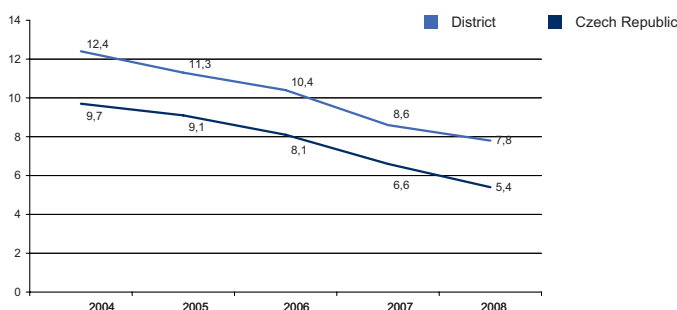
Source: Ministry of Labour and Social Affairs

## NUMBER OF ECONOMIC UNITS ACCORDING TO PREVAILING ACTIVITY



Source: Czech Statistical Office

## UNEMPLOYMENT - 5 YEAR TREND (%/YEAR)



Source: Czech Statistical Office

## FOREIGN DIRECT INVESTMENT

	FDI (CZK)	FDI (EUR)
Svitavy	6 926 327	260 193
CR (total)	2 032 111 185	76 337 761
Prague	1 049 062 899	39 408 824
Pardubice Average	10 105 090	379 605

Source: Czech National Bank

## IMPORTANT COMPANIES IN THE DISTRICT ACCORDING TO TURNOVER

Name of company	Location	Employees	Activity (Sector)	Turnover	www
Saint - Gobain Vertex, s.r.o.	Litomyšl - Nedošín	1000 - 1499	Manufacture of glass fibres	6 743	www.vertex.cz
Zrúd - Masokombinát Polička, a.s.	Kamenec u Poličky	500 - 999	Production and preserving of meat	1 732	www.mkp.cz, www.zrud.cz
Westvaco Svitavy, s.r.o.	Svitavy - Předměstí	250 - 499	Manufacture of other articles of paper and paperboard n.e.c.	1 387	www.meadwestvaco.com
Vertex Fabrics, s.r.o.	Litomyšl - Nedošín	100 - 199	Other textile weaving	1 353	www.vertex.cz
Miltra B, s.r.o.	Městečko Trnávka	200 - 249	Operation of dairies and cheese making	1 075	www.miltra.cz
Mach Drůbež, a.s.	Litomyšl - Město	250 - 499	Farming of poultry	1 052	www.mach.lit.cz
Agricol, s.r.o.	Polička - Horní Předměstí	250 - 499	Operation of dairies and cheese making	981	www.agricol.cz
Ravensburger Karton, s.r.o.	Polička - Horní Předměstí	250 - 499	Manufacture of games and toys	873	www.ravensburger.cz
Nekvinda - Zemědělská technika, a.s.	Svitavy - Předměstí	25 - 49	Wholesale of agricultural machinery and accessories and implements, tractors	838	www.nekvinda.cz
Poličské strojírny, a.s.	Polička	250 - 499	Manufacture of pumps and compressors	778	www.pos.cz/index.htm
Fibertex, a.s.	Svitavy - Předměstí	200 - 249	Manufacture of other textiles	702	
Továrna hasičské techniky, s.r.o.	Polička - Dolní Předměstí	250 - 499	Manufacture of motor vehicles	663	www.tht.cz
Svitap J. H. J., s.r.o.	Svitavy - Předměstí	500 - 999	Weaving of flax-type textiles	526	www.svitap.cz
OCV Czech, s.r.o.	Litomyšl	n/a	Other wholesale	500 - 999 mil.	
Hedva, a.s.	Moravská Třebová - Předměstí	500 - 999	Silk-type weaving	500 - 999 mil.	www.hedva.cz
Vertex Glass MAT, s.r.o.	Litomyšl - Nedošín	25 - 49	Manufacture of glass and glass products	480	
Jednota, spořební družstvo ve Svitavách	Svitavy - Město	n/a	Retail sale in non-specialized stores with food, beverages or tobacco predominating	438	
ITG Automotive Safety Czech, s.r.o.	Jevíčko	500 - 999	Manufacture of parts and accessories for motor vehicles and their engines	425	www.safetycomponents.com

Source: Albertina Company Monitor



# DISTRICT ÚSTÍ NAD ORLICÍ

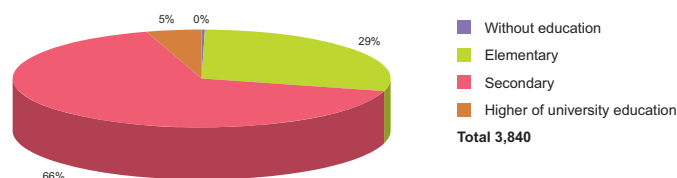
BASIC DATA	
Land Area	1,265 km <sup>2</sup>

TOWNS WITH POPULATION OVER 5,000			
Česká Třebová	16,328	Choceň	9,080
Ústí nad Orlicí	14,707	Letohrad	6,260
Vysoké Mýto	12,521	Žamberk	6,045
Lanškroun	10,166		

ACTUAL SITUATION ON LABOUR MARKET	
Population	139,366
Percentage in the total population of Czech Republic (%)	27.1
Population density (person/km <sup>2</sup> )	110.2
Workforce	72,577
Number of job seekers	6,377
Unemployment rate (%)	8.6

Source: Czech Statistical Office, Ministry of Labour and Social Affairs

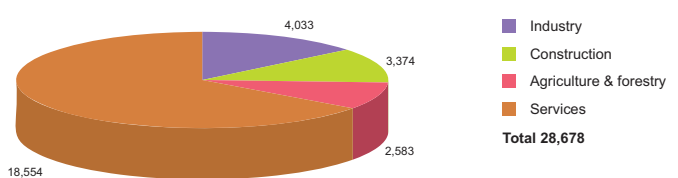
## NUMBER OF JOB SEEKERS ACCORDING TO EDUCATION



Source: Ministry of Labour and Social Affairs

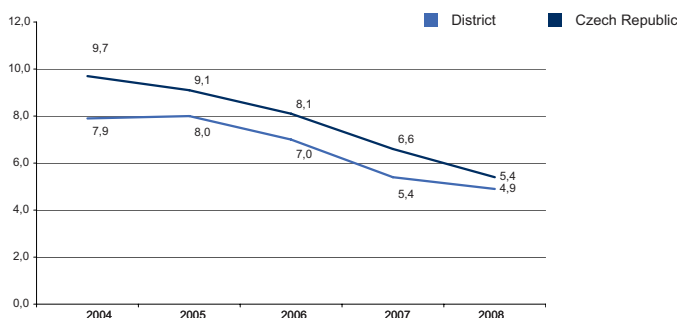


## NUMBER OF ECONOMIC UNITS ACCORDING TO PREVAILING ACTIVITY



Source: Czech Statistical Office

## UNEMPLOYMENT - 5 YEAR TREND (%/YEAR)



Source: Czech Statistical Office

## FOREIGN DIRECT INVESTMENT

	FDI (CZK)	FDI (EUR)
Ústí nad Orlicí	14 152 723	531 657
CR (total)	2 032 111 185	76 337 761
Prague	1 049 062 899	39 408 824
Pardubice Average	10 105 090	379 605

Source: Czech National Bank

## IMPORTANT COMPANIES IN THE DISTRICT ACCORDING TO TURNOVER

Name of company	Location	Employees	Activity (Sector)	Turnover	www
Iveco Czech Republic, a.s.	Vysoké Mýto	1500 - 1999	Manufacture of motor vehicles	11 789	www.karosa.cz
AVX Czech Republic, s.r.o.	Lanškroun	3000 - 3999	Manufacture of electronic valves and tubes and other electronic components	5 616	www.avxcorp.com
Rieter CZ, a.s.	Ústí nad Orlicí	1500 - 1999	Manufacture of machinery for textile, apparel and leather production	5 303	www.rieter.cz
Korado, a.s.	Česká Třebová	500 - 999	Manufacture of central heating radiators and boilers	2 914	www.korado.com
SOR Libchavy, s.r.o.	Libchavy - Dolní Libchavy	250 - 499	Manufacture of motor vehicles	1 922	www.sor.cz
Isolit - Bravo, s.r.o.	Jablonné nad Orlicí	500 - 999	Manufacture of electric domestic appliances	1 637	www.isolit-bravo.cz
Schott Electronic Packaging Lanškroun.	Lanškroun	500 - 999	Manufacture of electronic valves and tubes and other electronic components	1 615	www.schott.com
Spektrum CZ, a.s.	Lanškroun - Vnitřní Město	50 - 99	Wholesale of stationery	1500 mil. and more	www.spektrum.cz
Kögel, a.s.	Choceň - Dvořiško	250 - 499	Manufacture of bodies (coachwork) for motor vehicles	1500 mil. and more	www.koegel.cz
Konzum, obchodní družstvo	Ústí nad Orlicí	500 - 999	Retail sale in non-specialized stores with food, beverages or tobacco predominating	1 494	www.konzumuo.cz
Papírny Vltavský mlýn, a.s.	Lanškroun	250 - 499	Manufacture of household and sanitary goods and of toilet requisites	1 305	www.pvm.cz
BOR, s.r.o.	Choceň	25 - 49	Wholesale of grain, seeds and animal feeds	1 290	www.bor-sro.cz
Intergal Vrchovina, a.s.	Skořeniče	250 - 499	Production and preserving of poultrymeat	1 019	www.intergal.cz
Mecawel, s.r.o.	Ústí nad Orlicí	10 - 19	Wholesale of other machinery for use in industry, trade and navigation	757	www.mecawel.cz
Perla, bavlnářské závody, a.s.	Ústí nad Orlicí	250 - 499	Cotton-type weaving	697	www.perla.cz
Brück AM, s.r.o.	Zámorsk 10	200 - 249	General mechanical engineering	664	www.bruck.cz
INA Lanškroun, s.r.o.	Lanškroun	250 - 499	Manufacture of tools	619	
Šmidl, s.r.o.	Žamberk	250 - 499	Freight transport by road	500 - 999 mil.	www.smidl.cz
Oseva UNI, a.s.	Choceň	250 - 499	Wholesale of grain, seeds and animal feeds	500 - 999 mil.	www.osevauni.cz