

# ÚSTÍ REGION

DISTRICT CHOMUTOV  
 DISTRICT DĚČÍN  
 DISTRICT LITOMĚŘICE  
 DISTRICT LOUNY  
 DISTRICT MOST  
 DISTRICT TEPLICE  
 DISTRICT ÚSTÍ NAD LABEM



## ABOUT REGION

The Ústí Region in North Bohemia stretches along the border with Saxony. Its neighbors within limits of the Czech Republic are the regions of Karlovy Vary, Liberec, Central Bohemia and Plzeň. The region is divided in seven districts: Děčín, Chomutov, Litoměřice, Louny, Most, Teplice and Ústí nad Labem. The region's area on January 1, 2008 was 5,335 km<sup>2</sup> (6.8 % of Czech Republic territory), the seventh largest in the country. Population as of H1 2009 amounted to 835,533 inhabitants (8.0 % of the country's population, number five among all regions). There are 354 communities in Ústecký kraj (5.7 % of all communities in Czech Republic). The regional capital Ústí nad Labem has 94,960 inhabitants. There are 26 towns with a population over 5,000 in the Ústí Region.

The Ústí Region is full of historical landmarks, none of which have been put on the UNESCO list of World Heritage. The site with the most potential for getting on the list is Terezín, once a fortress and later a Jewish ghetto. Urban sanctuaries are found in Kadaň, Litoměřice, Úštěk and Žatec. The rotunda of St. George on top of Říp Mountain belongs to the symbols of the region. Other valuable monuments include castles (Duchcov, Ploskovice) and monasteries (Doksany, Osek). National park České Švýcarsko (Czech Switzerland) abounds with natural monuments. There are also protected landscape areas Labské pískovce (Labe Sandstones), České středohoří (mountains) and Lužické hory (mountains). There are many bicycle paths passing through the region, and a long cross country skiing track "Krušnohorská ski-highway" is running along the Krušné hory range. In mining town Most there is quite an uncommon building to be seen – a Gothic church that had to be pushed away by half a mile in 1975 to clear the way

for bucket excavators. Most also offers a large range of sporting facilities that include a car race circuit, a horse racing track and an aqua park. The most important university in the Ústí Region is Jan Evangelista Purkyně in Ústí nad Labem (UJEP) with five colleges focused mainly on pedagogy, humanities and partially also on artistic studies. For private universities there is an affiliate of The Institute of Finance and Administration in Most. In 2004, research and development regional expenses per capita amounted to CZK 621 (13th place, second to last in the country). Only 0.13 % of employees took part in development and research (also 13th place for the region).

The Ústí Region, with all the area below the Krušné hory mountain range, is an industrial site of international importance. There is a great tradition in construction, mining, power engineering, glass blowing and chemical industries. Agriculture also has its importance in the region – mainly hop farming, fruit production and viticulture. There is no important industrial clusters working in the area. CzechInvest agency's surveys are focused on possibilities in line of compostable plastics.

The potential of the Ústí Region is based, among other things, on raw materials in abundance for supplying local sectors of power engineering and construction. Thanks to its position, the region is well connected to main transportation arteries both at home and abroad. The railway corridor there is finished and serving, the highway D8 copying the road E55 is under construction. The chemistry industry is traditionally strong, the fertile soil is promising (and giving) prosperity to local viticulture, and there is much potential in skiing, mountain trekking and tourism bound to local historic landmarks.



[www.usti-nad-labem.cz](http://www.usti-nad-labem.cz)

# ÚSTÍ NAD LABEM

## OPEN GATE OF BOHEMIA

### CITY OF ÚSTÍ NAD LABEM

Ústí nad Labem is among the top ten cities in the Czech Republic. It has a population of around 100,000 and is located close to the German Border.

The history of the ninth largest city of the Czech Republic is connected particularly with industries. Its most extensive post-war development was intensively accelerated by massive coal mining. However, present day town planning processes are more comprehensive. Having gone through modernization, the traditional chemicals industry has conformed to the new requirements, thus becoming a more significant development factor for the city.

Today, Ústí nad Labem has the background for diverse entrepreneurial activities, and its environs offer superb opportunities for tourism. Its unique location on business route junctions predetermines the city to its specific position among European cities. Its exceptional transport connections contribute to its business growth as well as its cultural links.

Ústí is located at the confluence of the River Labe and River Bílina. To the south, it neighbours the Bohemian Uplands, and Krušné (Ore) Mountains to the north. The boundary of the Podkrušnohorská Basin is located west of the city. The city is situated in a deep valley (up to 400 m) of the River Labe and the surrounding slopes. Two rocks mark the border of the basin – the Mariánská Rock in the north, Castle Střekov Rock in the south-east and Sedlo Hill in the east.

The city boasts a unique strategic position. It is 98 km north-west of Prague. The border of the Federal Republic of Germany is 25 km from the city. The total area of the city is 94 km<sup>2</sup>.

The city seats the Ústí Region authority. The Ústí nad Labem administrative district of the municipality with increased scope of activities is an industrial centre of the Ústí Region. It has an area of 404 km<sup>2</sup>, representing 7.6 % of the total area of the Ústí Region. With a density of 291 inhabitants/km<sup>2</sup> it is nearly double the average density of the population in the region, featuring 80% of the population concentrated in the regional capital.



### THE USTI PENINSULA

The City of Usti nad Labem is presenting the Usti Peninsula as part of its vision for its eastern waterfront. The City's Strategic Development Department is fully prepared to talk to investors about residential, leisure and commercial opportunities that may attract Government and EU funding. Located only 3km from the City Centre, the Usti Peninsula is part of a regeneration area that takes in Krasne Brezno and Nestemice which are both run-down areas with the advantage of a waterfront location on the River Elbe. A masterplan is being drawn up by Prague-based architects, Casua in association with Arcadis.

"We are looking for developers who share our vision for our city. Our waterfront offers huge potential for investors and we are ready to help by providing local knowledge of the economy and planning regime and also by introducing our team who are experienced in EU and National funding."

### LAKE MILADA

The City of Usti nad Labem has shaken off its industrial past and come right up to date with the creation of a new leisure and tourism resort at Lake Milada, just outside the city.

Lake Milada, which covers 250 hectares, is now an attractive centre for cycling and other outdoor activities. Once it was a coal mine, but all trace of its former use has now gone and it is now being made ready for development as a tourist centre. Being close to the D8/A17 motorway means that it will be accessible from all areas of the Czech Republic and German Cities such as Dresden, Freiberg and Berlin.

The Lake, which began filling (naturally) in 2001 will be complete by 2011. The eventual waterline has been set out and areas for development agreed.

"Now is the time for developers and investors to talk to us. This next two years, while the lake takes its final shape, gives us an opportunity to work with our partners to create sites and facilities that exactly meet their needs. We are looking to create a world-class resort for outdoor sports and recreation."



Ústí nad Labem City Hall  
Department of strategic development  
Velká Hradební 2336/8  
401 00 Ústí nad Labem

Tel.: (+420) 477 010 650  
Fax: (+420) 477 010 682

[www.usti-nad-labem.cz](http://www.usti-nad-labem.cz)  
[www.invest-usti.cz](http://www.invest-usti.cz)

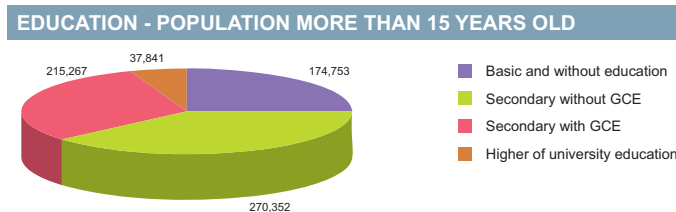
BASIC DATA	
Land Area	5,335 km <sup>2</sup>

ACTUAL SITUATION ON LABOUR MARKET	
Population	835,533
Percentage in the total population of Czech Republic (%)	8.0
Population density (person/km <sup>2</sup> )	156.6
Workforce	429,409
Number of job seekers	53,079
Unemployment rate (%)	12.1

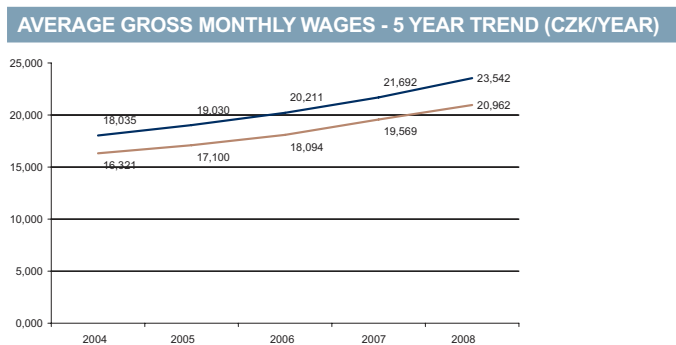
Source: Czech Statistical Office, Ministry of Labour and Social Affairs

NUMBER OF ECONOMIC UNITS ACCORDING TO PREVAILING ACTIVITY	
<b>Total</b>	<b>175,521</b>
Industry	19,525
Construction	23,406
Agriculture & forestry	8,905
Services	129,050

Source: Czech Statistical Office



Source: Czech Statistical Office



Source: Czech Statistical Office

Region	TOTAL		Per capita	
	mIn. CZK	mIn. EUR	Total CZK	Total EUR
Ústí	227 709	9 130	275 837	9 934
Average GDP for Czech regions	252 161	10 110	341 989	13 711
Share in GDP of the Czech Republic	6%			

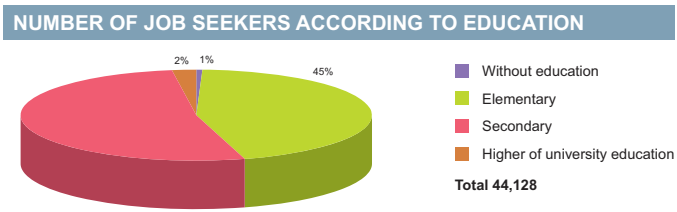
Source: Czech Statistical Office

ADMINISTRATIVE BREAKDOWN	
Number of districts	7
Number of municipalities	354
of that, number of towns	57

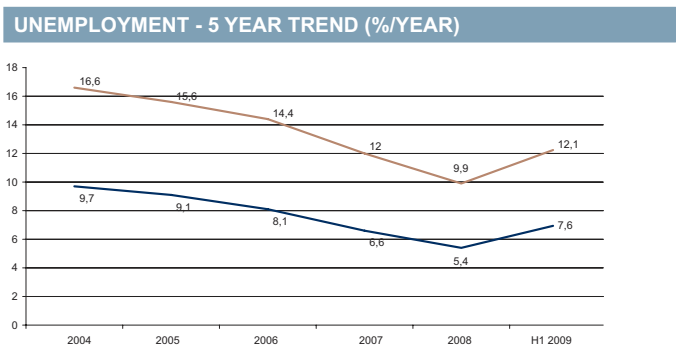
Source: Czech Statistical Office

	Number of employees	Wages (EUR)
<b>Manufacturing</b>	<b>54,519</b>	<b>908</b>
Man. of food products, beverages and tobacco products	2,736	652
Man. of chemical, chemical products, pharmaceuticals, and chemical fibres	6,001	1,228
Man. of rubber and plastic products	1,704	780
Man. of basic metals and fabricated metal products	6,868	912
Man. and repairs of machinery and equipment	8,395	916
Man. of electrical and optical equipment	6,717	752
Man. of transport equipment	8,988	876

Source: Czech Statistical Office



Source: Ministry of Labour and Social Affairs



Source: Czech Statistical Office

Region	FOREIGN DIRECT INVESTMENT	
	FDI (CZK)	FDI (EUR)
min.	17 940 192	673 937
Ústí	104 830 965	3 938 053
max.	1 049 062 899	39 408 824
Average	145 150 799	5 452 697

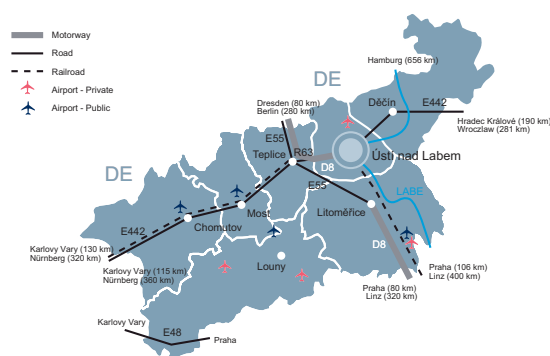
Source: Czech National Bank

Year	2004		2005		2006		2007		2008	
	CZK	EUR	CZK	EUR	CZK	EUR	CZK	EUR	CZK	EUR
Ústí	16,321	512	17,100	574	18,094	638	19,569	705	20,962	840
Average for Czech Republic	18,035	565	19,030	639	20,211	713	21,692	781	23,542	944

Source: Czech Statistical Office

LIST OF AIRPORTS	Specification		
	Public/Private	Civil/Military/Varied	International/Intrnational
Chomutov	Public	Civil	Intrnational
Most	Public	Civil	Intrnational
Panenský Týnec	Private	Civil	Intrnational
Raná	Public	Civil	Intrnational
Roudnice	Public	Civil	Intrnational
Roudnice	Private	Civil	International
Ústí	Private	Civil	Intrnational
Žatec/Macerka	Private	Civil	Intrnational

Source: Ministry of Transport, Aerobaze.cz



SCHOOL SYSTEM	Number of schools	Number of students	Number of graduates
<b>Secondary schools</b>			
Technical fields	n/a	12 992	2 717
Economic fields	n/a	14 251	3 123
ICT fields	n/a	2 782	625
<b>Higher schools</b>			
Technical fields	n/a	268	25
Economic fields	n/a	286	111
ICT fields	n/a	120	7
<b>Universities</b>			
Technical fields	1	374	48
Economic fields	1	1 638	368
ICT fields	1	386	39

Source: Institute for Information on Education

LABOUR OFFICE	City	Address	Phone	Fax	E-mail
	Chomutov	Cihlářská 4107, 430 03 Chomutov 3	474 638 211	474 638 205	chomutov@cv.mpsv.cz
	Děčín	Březinova 442/1, 405 02 Děčín 2	412 708 111	412 511 683	posta@dc.mpsv.cz
	Litoměřice	Michalská 259/12, 412 01 Litoměřice 1	416 713 111	416 735 724, 416 713 151	litomerice@lt.mpsv.cz
	Louny	Postoloprtská 2664, 440 01 Louny 1	415 634 111	415 672 448	louny@ln.mpsv.cz
	Most	ř. Budovatelů 1989, 434 01 Most 1	950 137 111	950 137 302	posta@mo.mpsv.cz
	Teplice	Vrchlického 3175, 415 01 Teplice 1	417 552 111	417 552 127	posta@tp.mpsv.cz
	Ústí nad Labem	Dvořákova 1609/18, 400 21 Ústí nad Labem	474 728 411	474 728 496	podatelna@ul.mpsv.cz

Source: Ministry of Labour and Social Affairs

SELECTED CZECHINVEST PROJECTS IN THE REGION					
Name	Location	Investor	Country	Sector	Year
AFSI Europe s.r.o.	Most	Advanced Filtration Systems Inc.		manufacture of motor vehicles	2007
AGC Automotive Czech a.s.	Chudečice	AGC	Japan	manufacture of motor vehicles	2005
Benteler Automotive Rumburk s.r.o.	Rumburk	Benteler Automobiltechnik	Germany	manufacture of motor vehicles	2004
Black & Decker (Czech) s.r.o.	Ústí nad Labem	Black & Decker	USA/UK	engineering	2002
CIE Praga Louny a.s.	Louny	CIE Berriz S.L.	Spain	manufacture of motor vehicles	2008
Conta s.r.o.	Podbořany	CANDY ELETTRODOMESTICI	Italy	other	2000
Donaldson Czech Republic s.r.o.	Kláštorec nad Ohří	Donaldson CR s.r.o. (III)	USA	manufacture of motor vehicles	2007
FUJIKOKI CZECH s.r.o.	Citoliby	Fujikoki Czech s.r.o.	Japan	manufacture of motor vehicles	2007
Glanzstoff - Bohemia s.r.o.	Lovosice	CAG Holding Gesellschaft m.b.H. a Glanzstoff Austria GmbH	Austria	electronics, electrotechnics	2009
Glaverbel Czech a.s.	Teplice Řetěnice	AGC	Japan	other	2000
Hope Global Europe, s.r.o.	Louny	Hope Global	USA	manufacture of motor vehicles	2008
CHEMOPETROL, a.s.	Litvínov	Chemopetrol	Czech Republic	chemistry, pharmacy	2000
KNAUF INSULATION, spol. s r.o.	n.s.	Knauf Insulation	Germany	plastics, rubber	2005
KOITO CZECH s.r.o.	Žatec	Koito	Japan	manufacture of motor vehicles	2001
KS Kolbenschmidt CR, a.s.	Ústí nad Labem	KS Kolbenschmidt CR, a.s.	Germany	manufacture of motor vehicles	2007
Mondi Packaging Paper Štětí a.s.	Štětí	Mondi Packaging Paper Štětí a.s.	Netherlands	other	2007
Nemak Europe s.r.o.	Havraň	Nemak	Mexico	manufacture of motor vehicles	2000
OMC Scientific Czech s.r.o.	Louny	Williams Advanced Materials Netherlands B.V.	Netherlands	shared services center	2004
Panasonic AVC Networks Czech	Žatec	Panasonic	Japan	electronics, electrotechnics	2009
PREOL, a.s.	Lovosice	Agrofert	Czech Republic	chemistry, pharmacy	2007
RAI Most s.r.o.	Most	Recticel	Belgium	plastics, rubber	2007
Tivall CZ, s.r.o.	Krupka	Tivall (1993)	Israel	food processing	2005
TOS VARNSDORF a.s.	Varnsdorf	TOS VARNSDORF a.s.	Czech Republic	engineering	2009
TRCZ s.r.o.	Lovosice	Tokai Rika	Japan	manufacture of motor vehicles	2001
UNIPETROL RPA, s.r.o.	Záluží u Litvínova	UNIPETROL, a.s.	Czech Republic	chemistry, pharmacy	2009

Source: CzechInvest

IMPORTANT COMPANIES IN THE REGION ACCORDING TO TURNOVER							
Name of company	Location	Employees	Activity (Sector)	Turnover	Phone	E-mail	WWW
Unipetrol RPA, s.r.o.	Litvínov - Záluží	2000 - 2499	Manufacture of plastics in primary forms	96 576	476 700 423, 476 700 006	unipetrolrpa@unipetrol.cz	www.unipetrolrpa.cz
ČEZ Distribuce, a.s.	Děčín IV - Podmokly	1000 - 1499	Distribution and trade of electricity	32 555	591 113 654, 840 840 840	cez@cez.cz	www.cez.cz
Setuza, a.s.	Ústí nad Labem - Sřekov	500 - 999	Manufacture of refined oils and fats	15 330	475 291 111, 475 292 640	setuza@setuza.cz	www.setuza.cz
Mostecká uhelná, a.s.	Most	4000 - 4999	Mining and agglomeration of lignite	13 563	476 203 601, 476 203 140	mail@mus.cz	www.mus.cz
AGC Flat Glass Czech a.s., člen AGC	Teplice - Řetenice	1000 - 1499	Manufacture of flat glass	12 506	417 502 100, 417 502 032	czech@glaverbel.com	www.glaverbel-czech.com
Severočeské doly, a.s.	Chomutov	4000 - 4999	Mining and agglomeration of lignite	11 846	474 692 303, 474 333 179	sdas@sdas.cz	www.sdas.cz
Česká Rafinérská, a.s.	Litvínov - Záluží	1000 - 1499	Manufacture of refined petroleum products	9 752	315 718 561, 476 165 239	info@crc.cz	www.crc.cz
Hopi, s.r.o.	Kláštepec nad Ohří - Mifetice u Klášterce	500 - 999	Wholesale on a fee or contract basis	8 795	474 375 516, 474 375 095	hopi@hopi.cz	www.hopi.cz
Mondi Štětí a.s.	Štětí	500 - 999	Manufacture of paper and paperboard	8 615	461 801 155, 416 802 025	info@mondipackaging.com	www.frantschach.com
Sandvik Chomutov Precision Tubes, s.r.o.	Chomutov	n/a	Manufacture of steel tubes	5 557	474 615 210, 474 401 210	petr.pazourek@sandvik.com	www.smt.sandvik.com/cz
Alcan Děčín Extrusions, s.r.o.	Děčín V - Rozbělesy	500 - 999	Aluminium production	5 504	412 508 111, 412 510 248	sales.decin@alcan.com	www.alcan.cz
Spolek pro chemickou a hutní výrobu,	Ústí nad Labem - město	1000 - 1499	Manufacture of plastics in primary forms	5 073	477 162 074, 477 163 333	info@spolchemie.cz	
Toyoda Gosei Czech, s.r.o.	Kláštepec nad Ohří - Verněřov	250 - 499	Manufacture of parts and accessories for motor vehicles and their engines	3 902	477 101 564, 474 371 412	tgcz@tgcz.cz	www.tgcz.cz
Lovochemie, a.s.	Lovosice	500 - 999	Manufacture of fertilizers and nitrogen compounds	3 840	416 563 284, 416 563 454	info@lovochemie.cz	www.lovochemie.cz
Severočeské vodovody a kanalizace, a.s.	Teplice - Trnovany	1500 - 1999	Collection, purification and distribution of water	3 763	840 111 112, 840 111 111	info@scvk.cz	www.scvk.cz
Trcz, s.r.o.	Lovosice	500 - 999	Manufacture of parts and accessories for motor vehicles and their engines	3 673	416 421 111	info@trcz.cz	www.trcz.cz
Viamont DSP, a.s.	Ústí nad Labem - Sřekov	200 - 249	Construction of motorways, roads, airfields and sport facilities	3 487	475 300 135, 475 300 111	press@viamont.cz	www.viamont.cz/dsp
G7, a.s.	Horní Litvínov	25 - 49	Wholesale of solid, liquid and gaseous fuels and related products	3 470	476 768 203	info@g7.cz	www.g7.cz
AGC Automotive Czech, a.s.	Bílina - Chudeřice	500 - 999	Shaping and processing of flat glass	3 424	417 814 318, 417 814 291	martin.kubat@eu.agc-automotive.com	www.glaverbel-czech.com
Armex Oil, s.r.o.	Děčín I - Děčín	10 - 19	Manufacture of refined petroleum products	3 241	412 526 542, 412 840 232	info@armexoil.com	www.armex.cz

Source: Albertina Company Monitor

KNOWLEDGE OF FOREIGN LANGUAGES			
LANGUAGE	ALL SKILLS LEVEL (%)	LANGUAGE	ALL SKILLS LEVEL (%)
English	44.4	Spanish	0.6
German	45.6	Polish	1.8
French	6.4	Russian	33.9
Italian	4.1	Nordic languages	0.0

Source: Augur Consulting

LIST OF UNIVERSITIES 2009				
Name of school	WWW	Orientation	Titles awarded	Students
Univerzita Jana Evangelisty Purkyně v Ústí nad Labem	www.ujep.cz	Variety of programmes	Bc., Mgr., Ph.D., Ing.	9584

Source: Institute for Information on Education

RENTS IN INDUSTRIAL PREMISES IN CR REGIONS (EUR/sqm/month)	
Ústí Region	3,75-4,25
Note 1: Net effective rents for units ca 4,000 sq m which is average deal size in the market	
Note 2: Premises are immediately available only some regions.	

Source: CB Richard Ellis

PRIME RENTS IN SHOPPING CENTRES (EUR/sqm/month)	
Ústí Region	25-30
Note: for units ca 100 sqm.	

Source: CB Richard Ellis

INDUSTRIAL PARKS IN THE CZECH REPUBLIC				
Project	Region	City/ Town	Total Area (warehouse + office)	Year of Completion
CTPoint Louny	Ústí nad Labem	Louny	11276	2007
Logistics Park Lovosice	Ústí nad Labem	Lovosice	15712	2007-2008
CTPark Krupka	Ústí nad Labem	Teplice	29131	2007-2008
VGP Park Předlice	Ústí nad Labem	Ústí nad Labem	300	2009

Source: CB Richard Ellis

SELECTED INDUSTRIAL ZONES IN THE USTI REGION					
Industrial zone	Area (ha)	Industrial zone	Area (ha)	Industrial zone	Area (ha)
Duchcov - plocha pro průmyslovou výstavbu	10,73	Kadaň - Královský Vrch	81,00	Perštejn	12,24
Chomutov - Nové Spořice	18,00	Krupka	77,00	Podbořany - Alpka	40,00
Chomutov - Severní Pole	18,20	Litvínov - Louka	63,80	Přestanov - průmyslová zóna	17,85
Chudějovice - Chotějovice - Bílina	15,07	Louny - Jihovýchod	28,90	Rumburk	29,00
Industriální park Verne Klášterec nad Ohří	154,00	Lovosice - PLCL 4 zóna	29,78	Severní Předlice	30,00
Jirkov - Otvice - průmyslová zóna	20,00	Most - Joseph	190,00	Žatec - Strategická průmyslová zóna Triangle	364,36

Source: CzechInvest

### IMPORTANT CONTACTS IN THE REGION

<p><b>Regional Council</b> Velká Hradební 3118/48, 400 02 Ústí nad Labem tel.: 475 657 111 fax: 475 200 245 Email: urad@kr-ustecky.cz, posta@kr-ustecky.cz URL: www.kr-ustecky.cz</p> <p><b>City Hall - Ústí nad Labem</b> Velká Hradební 8, 401 00 Ústí nad Labem tel.: 475 241 111 fax: 475 211 503 Email: podatelna.magistrat@mag-ul.cz URL: www.mag-ul.cz, www.usti-nl.cz</p> <p><b>CzechInvest - Regional Office</b> Mírové nám. 34, 400 01 Ústí nad Labem tel.: 475 201 158, 475 200 960 fax: 475 201 135 Email: ustnadlabem@czechinvest.org Contact persons: Mgr. Alena Chodovská, Bc. Petra Hrstková</p> <p><b>Regional Development Agency</b> Velká Hradební 3118/48, 400 02 Ústí nad Labem, workplace: Budovatelů 2830, 434 37 Most tel.: 475 657 331, 476 206 538, 475 221 564, fax: 476 706 331, rra@kr-ustecky.cz, rra@rra.cz www.rra.cz</p> <p><b>Regional Consulting &amp; Information Center - OHK Ústí nad Labem</b> Velká Hradební 8, 400 01 Ústí nad Labem tel.: 475 241 589, 475 241 360 fax: 475 241 360 Email: ohkul@mag-ul.cz URL: www.ohk-ul.cz/rpic.htm Contact person: RNDr. Jan Horák</p> <p><b>Regional Consulting &amp; Information Center - REGIONCONSULT s.r.o.</b> Nerudova 19, 430 01 Chomutov tel.: 474 651 937 fax: 474 652 121 Email: regionconsult@regionconsult.cz www.regionconsult.cz</p>	<p>Contact persons: Ing. Josef Kadlec, JUDr. Zdeněk Žouželka</p> <p><b>Regional Consulting &amp; Information Center - RPIC Teplice s.r.o.</b> Dr. Vrbenského 1, 41501 Teplice tel.: 417 531 600, 417 531482 fax: 417 531 482 Email: info@rpicteplice.cz URL: www.rpicteplce.cz Contact person: Ing. Josef Troller</p> <p><b>CzechTrade - Regional Information Place Ústí nad Labem</b> Mírové nám. 37, 400 01 Ústí nad Labem tel.: 477 011 212, 724 613 981 fax: 477 011 121 E-mail: usti-czechtrade@komora.cz, tomas.stanek@czechtrade.cz URL: www.czechtrade.cz Contact person: ing. Tomáš Staněk</p> <p><b>Regional Economic Chamber</b> Velká Hradební 3118/48, 400 02 Ústí nad Labem tel.: 475 657 335 fax: 475 657 340 Workplace: Mírové náměstí 37, 400 01 Ústí nad Labem tel.: 477 011 122 fax: 477 011 121 Email: francirkova@khk-usti.cz, khk@kr-ustecky.cz URL: www.khk-usti.cz Contact person: Martina Francirková</p> <p><b>Euro Information Center - Most</b> Budovatelů 2830, 434 37 Most tel.: 476 206 538 fax: 476 706 331 Email: eic@rra.cz URL: www.rra.cz Contact person: Mgr. Leo Steiner</p>	<p>tel.: 475 233 111, 840 113 355 fax: 475 209 495 Email: info@rwe.cz URL: www.rwe.cz</p> <p><b>ELECTRICITY</b> <b>Severočeská energetika, a. s.</b> Teplická 874/8, 405 49 Děčín IV tel.: 800 900 666 fax: 412 442 977 Email: cez@cez.cz URL: www.cez.cz</p> <p><b>WATER AND SEWER SYSTEM</b> <b>Severočeské vodovody a kanalizace, a. s.</b> Přítkovská 1689/14, 415 50 Teplice tel./fax: 726 828 828, 840 111 111 fax: 417 562 585 Email: info@scvk.cz URL: www.scvk.cz</p> <p><b>HEAT</b> <b>DOTERM SERVIS s.r.o.</b> Javorová 118, 435 13 Meziboří tel./fax: 476 748 193 Email: doterm servis@doterm servis.cz URL: www.doterm servis.cz</p> <p><b>Benešovská teplárenská společnost spol. s r.o.</b> Českolipská 208, 407 22 Benešov nad Ploučnicí tel.: 412 586 679</p> <p><b>ESON, s.r.o.</b> U Tonasa 172/2, 403 31 Ústí nad Labem tel.: 475 245 205 fax: 475 507 170 Email: vopenkova@cheva.cz URL: www.tonaso.cz</p> <p><b>První mostecká, a.s.</b> Stavbařů 32, 434 01 Most tel.: 476 702 554 fax: 476 706 569 Email: prvnimost@volny.cz URL: www.prvnimostecka.cz</p> <p><b>Quick I. v.o.s</b> Nová výstavba 200, 435 21 Obrnice</p>	<p>tel./fax: 476 118 031 Email: quicki@seznam.cz</p> <p><b>Teplné hospodářství města Lovosic spol. s r.o.</b> Žižkova 1122, 410 02 Lovosice 2 tel./fax: 416 532 309 Email: peterka.milan@atlas.cz</p> <p><b>Teplné hospodářství města Ústí nad Labem, s.r.o.</b> Malátova 2437/11, 400 11 Ústí nad Labem tel.: 472 770 140, 724 005 733 fax: 472 770 150 Email: thmu@thmu.cz URL: www.thmu.cz</p> <p><b>Tepl Braňany, spol. s r.o.</b> Bílinská 76, 435 22 Braňany tel.: 476 129 093, 724 115 670</p> <p><b>Tepl Chomutov, s.r.o. - ACTHERM spol. s r.o.</b> Jakoubka ze Stříbra 112/3, 430 01 Chomutov tel.: 474 651 053 Email: sebesta@actherm cv.cz URL: www.actherm cv.cz</p> <p><b>Termo Děčín, a.s.</b> Oblouková 958/25, 405 02 Děčín tel.: 412 552 440, 412 552 442 fax: 412 552 466 Email: termo@termo.mvz.cz URL: www.termo-decin.cz</p> <p><b>United Energy, a.s.</b> Teplárenská 2, 434 03 Most tel.: 476 447 111, 800 099 099 fax: 476 447 429 Email: info@ue.cz URL: www.teplnapohoda.cz</p> <p><b>Žatecká teplárenská a.s.</b> Svatováclavská 1020, 438 34 Žatec tel.: 415 735 851, 733 123 099 fax: 415 727 299 Email: ztas@ztas.cz URL: www.ztas.cz</p>
---	--	---	--

### UTILITIES

#### GAS

**Severočeská plynárenská, a.s.**  
Klíšská 940/96, 400 01 Ústí nad Labem

# DISTRICT CHOMUTOV



## BASIC DATA

Land Area	935 km <sup>2</sup>
-----------	---------------------

## TOWNS WITH POPULATION OVER 5,000

Chomutov	49,882	Klášterec nad Ohří	15,521
Jirkov	20,924		
Kadaň	17,901		

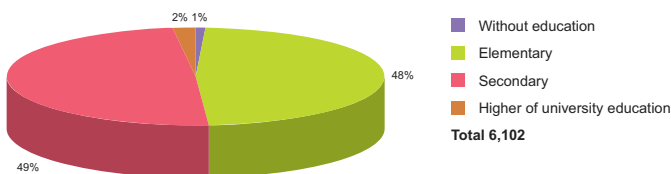
Source: Czech Statistical Office

## ACTUAL SITUATION ON LABOUR MARKET

Population	126,342
Percentage in the total population of Czech Republic (%)	15.1
Population density (person/km <sup>2</sup> )	135.1
Workforce	64,501
Number of job seekers	8,204
Unemployment rate (%)	12.5

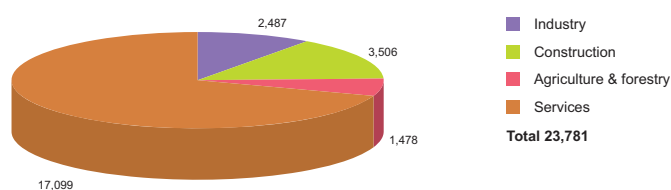
Source: Czech Statistical Office, Ministry of Labour and Social Affairs

## NUMBER OF JOB SEEKERS ACCORDING TO EDUCATION



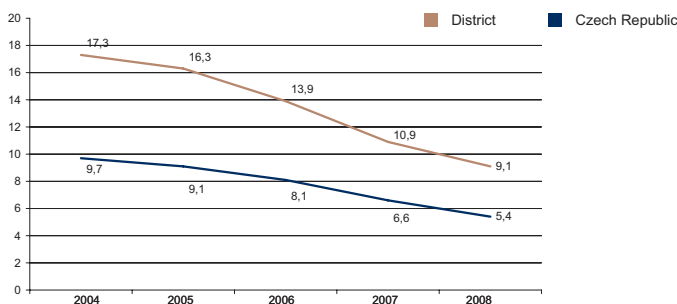
Source: Ministry of Labour and Social Affairs

## NUMBER OF ECONOMIC UNITS ACCORDING TO PREVAILING ACTIVITY



Source: Czech Statistical Office

## UNEMPLOYMENT - 5 YEAR TREND (%/YEAR)



Source: Czech Statistical Office

## FOREIGN DIRECT INVESTMENT

	FDI (CZK)	FDI (EUR)
Chomutov	11 160 780	419 263
CR (total)	2 032 111 185	76 337 761
Prague	1 049 062 899	39 408 824
Usti Average	14 975 852	562 579

Source: Czech National Bank

## IMPORTANT COMPANIES IN THE DISTRICT ACCORDING TO TURNOVER

Name of company	Location	Employees	Activity (Sector)	Turnover	www
Severočeské doly, a.s.	Chomutov	4000 - 4999	Mining and agglomeration of lignite	11 846	www.sdas.cz
Hopi, s.r.o.	Mířetice u Klášterce nad Ohří	500 - 999	Wholesale on a fee or contract basis	8 795	www.hopi.cz
Sandvik Chomutov Precision Tubes, s.r.o.	Chomutov	n/a	Manufacture of steel tubes	5 557	www.smt.sandvik.com/cz
Toyoda Gosei Czech, s.r.o.	Klášterec nad Ohří - Vernéřov	250 - 499	Manufacture of parts and accessories for motor vehicles and their engines	3 902	www.tgcz.cz
Parker Hannifin Industrial, s.r.o.	Chomutov	500 - 999	Manufacture of pumps and compressors	1500 mil. and more	www.parker.com
Kyocera Solar Europe, s.r.o.	Kadaň	n/a	Manufacture of electronic valves and tubes and other electronic components	1500 mil. and more	
BOS Automotive Products CZ, s.r.o.	Mířetice u Klášterce nad Ohří	200 - 249	Manufacture of parts and accessories for motor vehicles and their engines	1000 - 1499 mil.	www.bos.de/cz
Puls investiční, s.r.o.	Chomutov	n/a	Letting of own property	931	
ČEZ Teplárenská, a.s.	Chomutov	n/a	Steam and hot water supply	905	www.cez.cz
Hoppe, s.r.o.	Chomutov	250 - 499	Manufacture of locks and hinges	833	www.hoppe.com
R. B. Farquhar, s.r.o.	Chomutov	100 - 199	Other wholesale	783	www.rbfarquhar.cz
Povodí Ohře, s.p.	Chomutov	500 - 999	Operation of water courses and resources	745	www.povodiohře.cz
Donaldson Industrial CR - koncern, s.r.	Kadaň	100 - 199	Other wholesale	704	
Eaton Industries, s.r.o.	Chomutov	100 - 199	Letting of own property	649	
Kebek, s.r.o.	Chomutov	n/a	Manufacture of builders' ware of plastic	626	www.kebek.cz
Intier Automotive Seating Chomutov,	Chomutov	250 - 499	Manufacture of other textiles n.e.c.	513	www.intier.com
Qinn Invest, s.r.o.	Chomutov	25 - 49	Buying and selling of own real estate	500 - 999 mil.	
Pittsburgh Corning CR, s.r.o.	Klášterec nad Ohří - Vernéřov	200 - 249	Retail sale in non-specialized stores	500 - 999 mil.	
Multitechnik, s.r.o.	Chomutov	25 - 49	General construction of buildings and civil engineering works	500 - 999 mil.	
Donaldson Czech Republic, s.r.o.	Klášterec nad Ohří - Vernéřov	100 - 199	Manufacture of parts and accessories for motor vehicles and their engines	500 - 999 mil.	www.donaldson.com



# DISTRICT DĚČÍN

## BASIC DATA

Land Area	909 km <sup>2</sup>
-----------	---------------------

## TOWNS WITH POPULATION OVER 5,000

Děčín	52,509	Šluknov	5,781
Varnsdorf	15,824	Česká Kamenice	5,514
Rumburk	11,328	Jilové	5,273

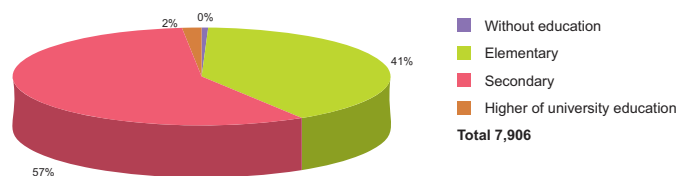
Source: Czech Statistical Office

## ACTUAL SITUATION ON LABOUR MARKET

Population	135,743
Percentage in the total population of Czech Republic (%)	16.2
Population density (person/km <sup>2</sup> )	149.3
Workforce	72,861
Number of job seekers	9,653
Unemployment rate (%)	13.1

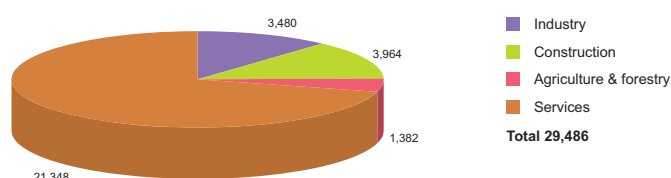
Source: Czech Statistical Office, Ministry of Labour and Social Affairs

## NUMBER OF JOB SEEKERS ACCORDING TO EDUCATION



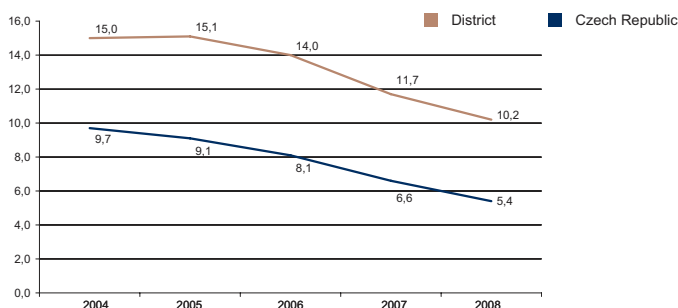
Source: Ministry of Labour and Social Affairs

## NUMBER OF ECONOMIC UNITS ACCORDING TO PREVAILING ACTIVITY



Source: Czech Statistical Office

## UNEMPLOYMENT - 5 YEAR TREND (%/YEAR)



Source: Czech Statistical Office

## FOREIGN DIRECT INVESTMENT

	FDI (CZK)	FDI (EUR)
Děčín	7 009 860	263 331
CR (total)	2 032 111 185	76 337 761
Prague	1 049 062 899	39 408 824
Usti Average	14 975 852	562 579

Source: Czech National Bank

## IMPORTANT COMPANIES IN THE DISTRICT ACCORDING TO TURNOVER

Name of company	Location	Employees	Activity (Sector)	Turnover	www
ČEZ Distribuce, a.s.	Děčín IV - Podmokly	1000 - 1499	Distribution and trade of electricity	32 555	www.cez.cz
Alcan Děčín Extrusions, s.r.o.	Děčín V - Rozbělesy	500 - 999	Aluminium production	5 504	www.alcan.cz
Armex Oil, s.r.o.	Děčín I - Děčín	10 - 19	Manufacture of refined petroleum products	3 241	www.armex.cz
Benteler Automotive Rumburk, s.r.o.	Rumburk	500 - 999	Manufacture of parts and accessories for motor vehicles and their engines	2 803	www.benteler.cz
ČEZ Správa majetku, s.r.o.	Děčín IV - Podmokly	100 - 199	Retail sale in non-specialized stores	1993	www.cez.cz
AIR Products, s.r.o.	Děčín V - Rozbělesy	100 - 199	Wholesale of solid, liquid and gaseous fuels and related products	1536	www.airproducts.cz
SCA Packaging Česká republika, s.r.o.	Jilové - Martiněves	500 - 999	Manufacture of corrugated paper and paperboard	1500 mil. and more	www.scapackaging.cz
Chart Ferox, a.s.	Děčín V - Rozbělesy	500 - 999	Manufacture of tanks, reservoirs and containers of metal	1500 mil. and more	www.ferox.cz
Zemědělské zásobování a nákup v Děčíně	Děčín I - Děčín	25 - 49	Manufacture of prepared feeds for farm animals	1 289	www.zzn-dc.cz
Velveta, a.s.	Varnsdorf	500 - 999	Finishing of textiles	703	www.velveta.cz
Plaston CR, s.r.o.	Šluknov	200 - 249	Manufacture of plastic products	649	www.plaston.com
Bronswerk Heat Transfer, s.r.o.	Benešov nad Ploučnicí	100 - 199	Manufacture of non-domestic cooling and ventilation equipment	637	www.bronswerk.cz
Bohemia Cargo, s.r.o.	Děčín XII - Vilsnice	50 - 99	Activities of other transport agencies	628	www.bohemiacargo.cz
Schäfer a Sýkora, s.r.o.	Rumburk 1	100 - 199	Sale of motor vehicle parts and accessories	585	www.sasa.cz
Uniles, a.s.	Rumburk 1	250 - 499	Forestry	577	
ABX, s.r.o.	Rumburk 1	n/a	Manufacture of non-electric domestic appliances	552	www.abx.cz
Čspl, a.s.	Děčín - Děčín I-Děčín	250 - 499	Inland water transport	500 - 999 mil.	www.cspl.cz
Hoco Bauelemente, s.r.o.	Děčín-Boletice	100 - 199	Manufacture of builders' ware of plastic	457	www.hoco.cz

# DISTRICT LITOMĚŘICE



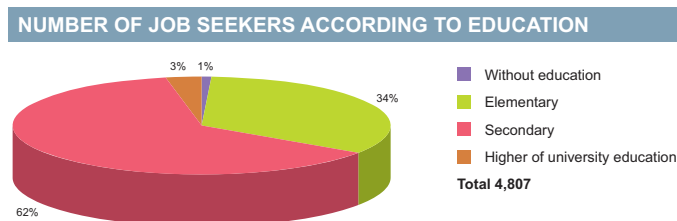
BASIC DATA	
Land Area	1,032 km <sup>2</sup>

TOWNS WITH POPULATION OVER 5,000			
Litoměřice	23,768	Lovosice	9,614
Roudnice nad Labem	13,014	Štětí	9,029

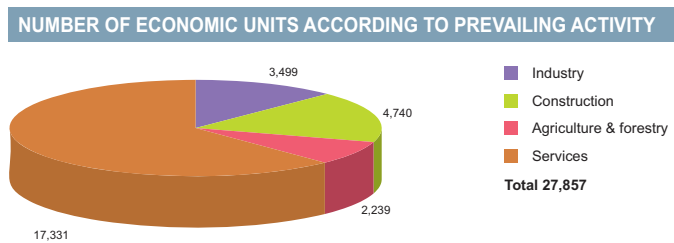
Source: Czech Statistical Office

ACTUAL SITUATION ON LABOUR MARKET	
Population	118,241
Percentage in the total population of Czech Republic (%)	14.2
Population density (person/km <sup>2</sup> )	114.6
Workforce	60,474
Number of job seekers	5,833
Unemployment rate (%)	9.3

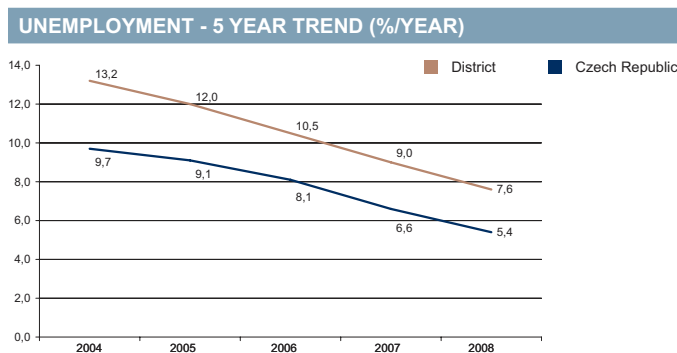
Source: Czech Statistical Office, Ministry of Labour and Social Affairs



Source: Ministry of Labour and Social Affairs



Source: Czech Statistical Office



Source: Czech Statistical Office

**FOREIGN DIRECT INVESTMENT**

	FDI (CZK)	FDI (EUR)
Litoměřice	11 787 210	442 795
CR (total)	2 032 111 185	76 337 761
Prague	1 049 062 899	39 408 824
Usti Average	14 975 852	562 579

Source: Czech National Bank

**IMPORTANT COMPANIES IN THE DISTRICT ACCORDING TO TURNOVER**

Name of company	Location	Employees	Activity (Sector)	Turnover	www
Mondi Štětí a.s.	Štětí	500 - 999	Manufacture of paper and paperboard	8 615	www.frantschach.com
Lovochemie, a.s.	Lovosice	500 - 999	Manufacture of fertilizers and nitrogen compounds	3 840	www.lovochemie.cz
Trcz, s.r.o.	Lovosice	500 - 999	Manufacture of parts and accessories for motor vehicles and their engines	3 673	www.trcz.cz
Lafarge Cement, a.s.	Čížkovice	n/a	Manufacture of cement	1 590	www.lafarge.cz
Chládek & Tintěra, a.s.	Litoměřice - Předměstí	250 - 499	Construction of motorways, roads, airfields and sport facilities	1 521	www.cht.cz
Roto, a.s.	Štětí	200 - 249	Manufacture of paper and paperboard	1500 mil. and more	www.norske-skog.com
Rock Oil plus, s.r.o.	Štětí - Hněvice	1 - 5	Retail sale of automotive fuel	1500 mil. and more	
Procházka, s.r.o.	Roudnice nad Labem	500 - 999	Production of meat and poultrymeat products	1500 mil. and more	www.prochazka.cz
Pospíšil- Tippo	Litoměřice - Město	6 - 9	Plumbing	1500 mil. and more	
Glanzstoff - Bohemia, s.r.o.	Lovosice	500 - 999	Manufacture of man-made fibres	1 354	www.glanzstoff.com
Mondi Coating Štětí, a.s.	Štětí	100 - 199	Manufacture of other articles of paper and paperboard n.e.c.	1 116	www.mondipackaging.com
Procházka Maso - uzeniny, s.r.o.	Roudnice nad Labem	500 - 999	Retail sale of meat and meat products	1000 - 1499 mil.	www.prochazka.cz
Glazura, s.r.o.	Roudnice nad Labem	n/a	Manufacture of paints, varnishes and similar coatings, printing ink and mastics	823	www.glazura.cz
Euro Waste, a.s.	Štětí	10 - 19	Wholesale of waste and scrap	695	www.eurowaste.cz
2 JCP, a.s.	Račice	250 - 499	Manufacture of metal structures and parts of structures	666	www.2jcp.cz
Follyx, s.r.o.	Litoměřice - Předměstí	20 - 24	Other retail sale in non-specialized stores	644	www.follyx.cz
Meva, a.s.	Roudnice nad Labem	250 - 499	Manufacture of tanks, reservoirs and containers of metal	565	www.meva.cz
Hennlich Industrietechnik, s.r.o.	Litoměřice - Předměstí	100 - 199	Architectural and engineering services (incl. design)	528	www.hennlich.cz
Mondi Bags Štětí, a.s.	Štětí	100 - 199	Manufacture of corrugated paper and paperboard	500 - 999 mil.	www.papirove-lasky.cz
Mevatec, s.r.o.	Roudnice nad Labem	25 - 49	Other retail sale in non-specialized stores	533	www.mevatec.cz

Source: Albertina Company Monitor



# DISTRICT LOUNY

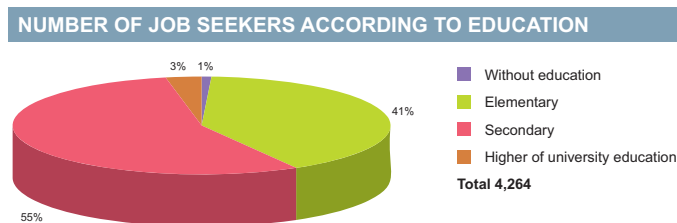
BASIC DATA	
Land Area	1,118 km <sup>2</sup>

TOWNS WITH POPULATION OVER 5,000			
Žatec	19,397	Podbořany	6,364
Louny	18,791	Postoloprty	5,097

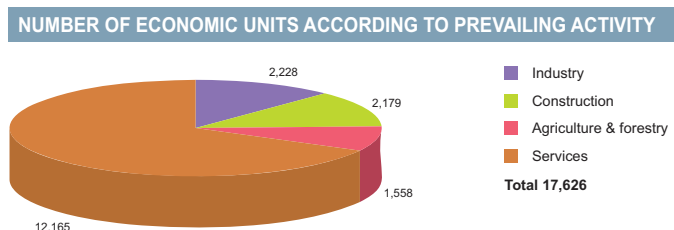
Source: Czech Statistical Office

ACTUAL SITUATION ON LABOUR MARKET	
Population	87,152
Percentage in the total population of Czech Republic (%)	10.4
Population density (person/km <sup>2</sup> )	78.0
Workforce	50,470
Number of job seekers	5,398
Unemployment rate (%)	10.5

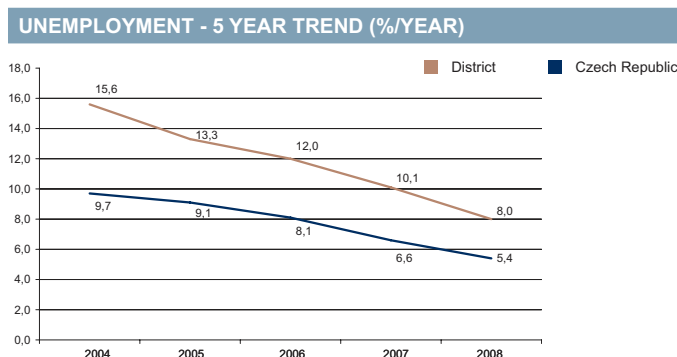
Source: Czech Statistical Office, Ministry of Labour and Social Affairs



Source: Ministry of Labour and Social Affairs



Source: Czech Statistical Office



Source: Czech Statistical Office

**FOREIGN DIRECT INVESTMENT**

	FDI (CZK)	FDI (EUR)
Louny	9 929 551	373 011
CR (total)	2 032 111 185	76 337 761
Prague	1 049 062 899	39 408 824
Usti Average	14 975 852	562 579

Source: Czech National Bank

**IMPORTANT COMPANIES IN THE DISTRICT ACCORDING TO TURNOVER**

Name of company	Location	Employees	Activity (Sector)	Turnover	www
Lubomír Krupička	Postoloprty	n/a	Cutting, shaping and finishing of ornamental and building stone	1500 mil. and more	
IPS Alpha Technology Europe, s.r.o.	Staňkovice - Triangle	1500 - 1999	Other wholesale	1500 mil. and more	
Conta, s.r.o.	Podbořany - Hlubany	500 - 999	Manufacture of electric domestic appliances	1500 mil. and more	www.contasro.cz
Koito Czech, s.r.o.	Žatec	250 - 499	Manufacture of electrical equipment for engines and vehicles n.e.c.	1 340	www.koito-czech.cz
Lostr, a.s.	Louny	500 - 999	Manufacture of railway and tramway locomotives and rolling stock	1 261	www.lostr.cz
FTE automotive Czechia, s.r.o.	Podbořany	250 - 499	Manufacture of motor vehicles	1295	
Aisan Industry Czech, s.r.o.	Louny	n/a	Manufacture of pumps and compressors	1000 - 1499 mil.	www.aisan.cz
Fujikoki Czech, s.r.o.	Louny	n/a	Other wholesale	964	www.fujikoki.cz
První Žatecká, a.s.	Louny	n/a	Wholesale of agricultural raw materials and live animals	907	www.1zatecka.cz
KB - Blok systém, s.r.o.	Postoloprty	n/a	Manufacture of concrete products for construction purposes	501	www.kb-blok.cz
Ekostavby Louny, s.r.o.	Louny	200 - 249	Construction of motorways, roads, airfields and sport facilities	500 - 999 mil.	www.ekostavbylouny.cz
Aisan Industry Louny, s.r.o.	Louny	200 - 249	Other wholesale	898	
Elektroporcelán Louny, a.s.	Louny	250 - 499	Manufacture of ceramic insulators and insulating fittings	418	www.epl.cz
Šilhánek a syn, a.s.	Kryry	100 - 199	Building of complete constructions or parts thereof; civil engineering	318	www.silhaneck.cz
Knauf Počerady, s.r.o.	Počerady	50 - 99	Manufacture of plaster products for construction purposes	300 - 499 mil.	
Bohemia Hop, a.s.	Žatec	6 - 9	Agents involved in the sale of a variety of goods	300 - 499 mil.	www.bohemiahop.cz
KB - Blok Postoloprty, s.r.o.	Postoloprty	n/a	Wholesale of wood, construction materials and sanitary equipment	248	www.kb-bloktavebniny.cz
Lutos, a.s.	Lubeneč	50 - 99	Manufacture of other special purpose machinery and equipment	241	www.lutos.cz
Jednota, spotřební družstvo	Podbořany	100 - 199	Retail sale in non-specialized stores with food, beverages or tobacco predominating	236	
Praga Louny CZ, a.s.	Louny	250 - 499	General mechanical engineering	235	www.pragalouny.cz

# DISTRICT MOST



BASIC DATA	
Land Area	467 km <sup>2</sup>

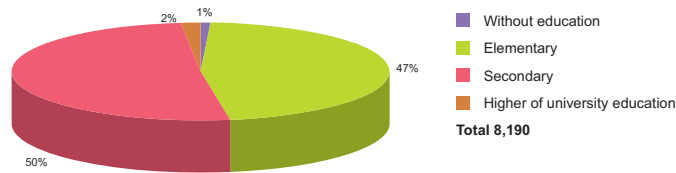
TOWNS WITH POPULATION OVER 5,000	
Most	67,543
Litvínov	27,118

Source: Czech Statistical Office

ACTUAL SITUATION ON LABOUR MARKET	
Population	117,030
Percentage in the total population of Czech Republic (%)	14.0
Population density (person/km <sup>2</sup> )	250.6
Workforce	60,195
Number of job seekers	9,215
Unemployment rate (%)	15.0

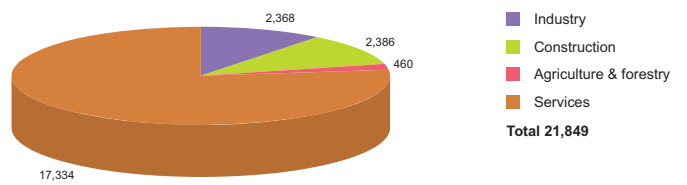
Source: Czech Statistical Office, Ministry of Labour and Social Affairs

## NUMBER OF JOB SEEKERS ACCORDING TO EDUCATION



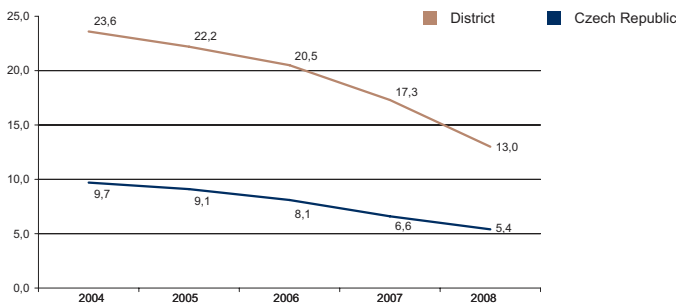
Source: Ministry of Labour and Social Affairs

## NUMBER OF ECONOMIC UNITS ACCORDING TO PREVAILING ACTIVITY



Source: Czech Statistical Office

## UNEMPLOYMENT - 5 YEAR TREND (%/YEAR)



Source: Czech Statistical Office

## FOREIGN DIRECT INVESTMENT

	FDI (CZK)	FDI (EUR)
Most	42 352 359	1 590 998
CR (total)	2 032 111 185	76 337 761
Prague	1 049 062 899	39 408 824
Usti Average	14 975 852	562 579

Source: Czech National Bank

## IMPORTANT COMPANIES IN THE DISTRICT ACCORDING TO TURNOVER

Name of company	Location	Employees	Activity (Sector)	Turnover	www
Unipetrol RPA, s.r.o.	Litvínov - Záluží	2000 - 2499	Manufacture of plastics in primary forms	96 576	www.unipetrolrpa.cz
Mostecká uhelná, a.s.	Most	4000 - 4999	Mining and agglomeration of lignite	13 563	www.mus.cz
Česká Rafinářská, a.s.	Litvínov - Záluží	1000 - 1499	Manufacture of refined petroleum products	9 752	www.crc.cz
G7, a.s.	Horní Litvínov	25 - 49	Wholesale of solid, liquid and gaseous fuels and related products	3 470	www.g7.cz
United Energy právní nástupce, a.s.	Most - Komořany	250 - 499	Production of electricity	2 754	www.ue.cz
Unipetrol Doprava, a.s.	Litvínov - Růžodol	500 - 999	Transport via railways	1500 mil. and more	www.unipetroloprava.cz
R & M Unimontex, s.r.o.	Most	n/a	Manufacture of other special purpose machinery n.e.c.	1500 mil. and more	www.unimontex.cz
Grammer CZ, s.r.o.	Most - Velebudice	1500 - 1999	Manufacture of parts and accessories for motor vehicles and their engines	1500 mil. and more	
Euromont Group, a.s.	Most - Velebudice	250 - 499	Manufacture of other general purpose machinery n.e.c.	1 282	www.euromont.cz
Schoeller Litvínov, k.s.	Horní Litvínov	n/a	Preparation and spinning of cotton-type fibres	1000 - 1499 mil.	www.schoeller-textil.com
DTS Vrbenský, a.s.	Most	n/a	Site preparation	915	www.mus-dts.cz
Speciální stavby Most, s.r.o.	Most	100 - 199	General construction of buildings and civil engineering works	849	www.specialnistavbymost.cz
Siad Czech, s.r.o.	Braňany	50 - 99	Other wholesale	751	www.securpneus.cz
Nemak Czech Republic, s.r.o.	Most	200 - 249	Business and management consultancy activities	749	www.nemak.cz
Renolit Czech, s.r.o.	Most - Čepirohy	50 - 99	Manufacture of plastic plates, sheets, tubes and profiles	746	
Starcam, s.r.o.	Havraň	100 - 199	Mining of non-ferrous metal ores, except uranium and thorium ores	740	
Krušnohorské strojírny Komořany, a.s.	Most - Komořany	250 - 499	Manufacture of machinery for mining, quarrying and construction	714	www.ksk-as.cz
Inelsev, s.r.o.	Most	100 - 199	Installation of electrical wiring and fittings	611	www.inelsev.cz
Keramost, a.s.	Most	250 - 499	Mining of kaolin	574	www.keramost.cz
Euro Support Manufacturing Czechia, s.r.	Litvínov - Záluží	100 - 199	Manufacture of other chemical substances	518	

Source: Albertina Company Monitor



# THE STATUTORY TOWN MOST

The statutory town Most offers to potential investors for the realization of their investment projects the background of the high quality strategic industrial zone Joseph and the development zone called Pod Lajsníkem, together with good quality citizen facilities in the spheres of schools, culture, health service, commerce and sports. The region of the town Most is significant with its industrial tradition, which is reinforced by the vast net of the training institution and secondary technical schools, it offers to the potential investors plenty of qualified and motivated employees.

*The Most region is known by its high rate of jobless people. Though this fact is unfavorable for the town, it is an expressive criterion in the good evaluation of the coming investors. The region of Most is a sought after locality and an opportunity for new investment designs and we believe, that this trend will continue in the future as well. The building of new industrial zones has brought to the town Most a considerable contributions, especially in the sphere of the socially-economic development of the region of Most.*

*An undisputable advantage of placing new investments in the zones in question is their finished readiness, the services connected with the placing of establishments and the subsequent care. The town Most is the only proprietor of the offered free lands, which is a guarantee of an easy bargain. We offer to our investors a professional insurance of the zone management and dealing on a high level ensured by a management having experience in the sphere of foreign and inland investments. The leading manager of the industrial zones near Most is a holder of a special appreciation of the Agency Czechinvest, the Association for the Foreign Investments AFI and of the Ministry of Industry and Commerce of the Czech Republic under the name Manager of the Real Estates for Enterprise Activities.*

## We welcome new investors and support the existing ones

To the investors, who resolve to realize their investment designs in the industrial or development zones of Most, we offer and furnish a good quality background with modern infrastructure and high quality further service.

The task and goal of our employees does not end by the support of placing the investor in the zone. Their task and goal is to insure that the investor enjoys his stay in the zone during the whole time of his activities as well as possible, so that he can carry out his entrepreneur activities undisturbed. Therefore we do our best for incessant bettering the conditions and for an integral development of the zones and try to comply maximally with the requirements, as well as for the existing and also for the new investors.

The quality of the work of our employees is witnessed also by the fact, that we were rewarded by the prestige appreciation of the Industrial Zone with the biggest economic contribution in the year 2008.

## Industrial Zone Joseph

The strategic industrial zone Joseph (further called PZ) has been defined in the years 2001-2002 in connection with the need to place a significant strategic investor, namely the company Nematik Czech Republic s.r.o. This industrial zone is placed 8 km south-west from Most in the vicinity of the speed communication R7 (Praha - Chemnitz).

Besides the company Nematik Czech Republic s.r.o. there are already active other four serious investors in this industrial zone at present. This industrial zone disposes of a qualitatively good and notably high capacity transport and technical infrastructure, which is being constantly brightened, maintained and modernized. The transport in the industrial zone is assured by the town collective transport. It is only natural, that the territorial plan has been approved. So it offers to the coming investors good background and service on the highest level.

At present there are in this industrial zone to disposition pieces of land with an area of 1,8 - 19,6 ha for a non competitive price of 370 CZK/sq. m.

More exact information about the technical and transport infrastructure inclusive the land engagement and the possibility of placing can be found under the address [www.pz-joseph.eu](http://www.pz-joseph.eu)



## Development Zone Pod Lajsníkem

The development zone Pod Lajsníkem (further called RZ) is a zone at the town Most, which has been created in the year 2001 in conformity with the territorial plan. The fundamental conception at the origin of the zone (RZ) has been creation of the development zones for placing small investors with maximal areas of 0,5 - 2,0 ha with an exclusively non disturbing production. The development zone is equipped with the fundamental transport and technical infrastructure.

In this development zone are placed two investors at present and we shall invite other investors with pleasure. There are to disposition free areas with an extent of 0,5 - 4,5 ha for the price of 400 CZK/sq. m.

Further information about the technical and transport infrastructure including land occupation can be found on the address [www.mesto-most.cz/investice/](http://www.mesto-most.cz/investice/)

# DISTRICT TEPLICE



BASIC DATA	
Land Area	469 km <sup>2</sup>

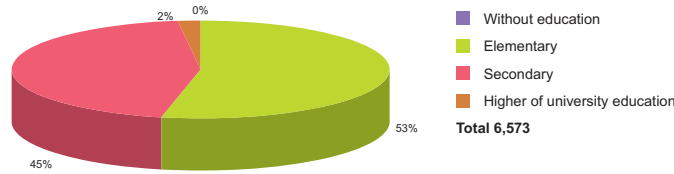
TOWNS WITH POPULATION OVER 5,000			
Teplice	51,461	Duchcov	9,001
Bílina	15,731	Dubí	7,834
Krupka	14,013		

Source: Czech Statistical Office

ACTUAL SITUATION ON LABOUR MARKET	
Population	130,016
Percentage in the total population of Czech Republic (%)	15.6
Population density (person/km <sup>2</sup> )	277.2
Workforce	60,468
Number of job seekers	7,472
Unemployment rate (%)	11.9

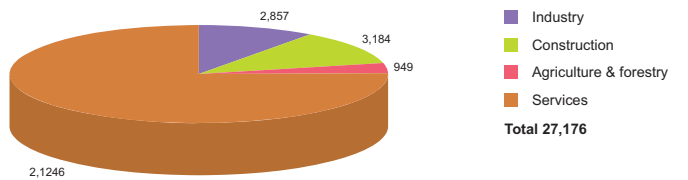
Source: Czech Statistical Office, Ministry of Labour and Social Affairs

## NUMBER OF JOB SEEKERS ACCORDING TO EDUCATION



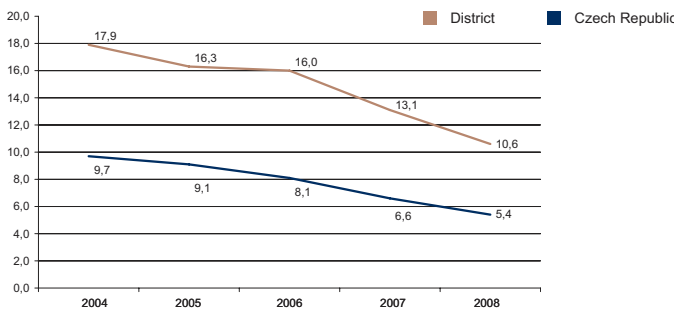
Source: Ministry of Labour and Social Affairs

## NUMBER OF ECONOMIC UNITS ACCORDING TO PREVAILING ACTIVITY



Source: Czech Statistical Office

## UNEMPLOYMENT - 5 YEAR TREND (%/YEAR)



Source: Czech Statistical Office

## FOREIGN DIRECT INVESTMENT

	FDI (CZK)	FDI (EUR)
Teplice	12 405 146	466 008
CR (total)	2 032 111 185	76 337 761
Prague	1 049 062 899	39 408 824
Usti Average	14 975 852	562 579

Source: Czech National Bank

## IMPORTANT COMPANIES IN THE DISTRICT ACCORDING TO TURNOVER

Name of company	Location	Employees	Activity (Sector)	Turnover	www
AGC Flat Glass Czech a.s., člen AGC	Teplice - Řetenice	1000 - 1499	Manufacture of flat glass	12 506	www.glaverbel-czech.com
Severočeské vodovody a kanalizace, a.s.	Teplice - Trnovany	1500 - 1999	Collection, purification and distribution of water	3 763	www.scvk.cz
AGC Automotive Czech, a.s.	Bílina - Chudečice	500 - 999	Shaping and processing of flat glass	3 424	www.glaverbel-czech.com
Avirunion, a.s.	Dubí - Bystřice	500 - 999	Manufacture of hollow glass	2 775	www.avirunion.cz
Vodohospodářské stavby, společnost	Teplice	500 - 999	Construction of motorways, roads, airfields and sport facilities	1500 mil. and more	www.vhs.cz
Betonstav Teplice, a.s.	Teplice	20 - 24	Architectural and engineering services (incl. design)	1 680	www.betonstav.com
Severočeská vodárenská společnost, a.s.	Teplice - Trnovany	n/a	Letting of own property	1 294	
1. Betonstav, s.r.o.	Bystřany - Nové Dvory	100 - 199	Installation of electrical wiring and fittings	1 034	www.betonstav.cz
AGC Automotive Bílina, s.r.o., člen AGC	Bílina - Chudečice	250 - 499	Manufacture of parts and accessories for motor vehicles and their engines	1 024	www.recticel.com
Technimat, k.s.	Novosedlice	100 - 199	Wholesale of metals and metal ores	1 007	www.technimat.cz
Lybar, a.s.	Rtyně nad Bílinou - Velvěty	250 - 499	Manufacture of perfumes and toilet preparations	939	www.lybar.cz
SD - 1.strojírenská, a.s.	Bílina - Mostecké Předměstí	500 - 999	Manufacture of locks and hinges	865	
Auto - Kabel Krupka, s.r.o.	Krupka	200 - 249	Manufacture of electricity distribution and control apparatus	772	
AGC Processing Teplice a.s.	Teplice - Řetenice	250 - 499	Shaping and processing of flat glass	721	
Teplotechna - Prima, s.r.o.	Teplice 1	100 - 199	Other construction work involving special trades	506	www.teplotechna-prima.com
Vitrablok, k.s.	Duchcov	250 - 499	Manufacture and processing of other glass, including technical glassware	815	www.vitrablok.com
Ídeal Standard, s.r.o.	Teplice - Trnovany	500 - 999	Manufacture of ceramic sanitary fixtures	500 - 999 mil.	www.idealstandard.cz
Betonstav PSV, s.r.o.	Bystřany - Nové Dvory	50 - 99	Installation of electrical wiring and fittings	500 - 999 mil.	
SD - Autodoprava, a.s.	Bílina - Mostecké Předměstí	250 - 499	Freight transport by road	446	www.sdautodoprava.cz
Enaspol, a.s.	Teplice 1	50 - 99	Manufacture of soap and detergents, cleaning and polishing preparations	442	www.enaspol.cz

Source: Albertina Company Monitor

# DISTRICT ÚSTÍ NAD LABEM



BASIC DATA	
Land Area	404 km <sup>2</sup>

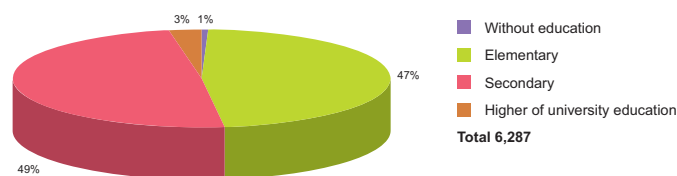
TOWNS WITH POPULATION OVER 5,000	
Ústí nad Labem	94,960

Source: Czech Statistical Office

ACTUAL SITUATION ON LABOUR MARKET	
Population	121,010
Percentage in the total population of Czech Republic (%)	14.5
Population density (person/km <sup>2</sup> )	299.5
Workforce	60,442
Number of job seekers	7,305
Unemployment rate (%)	11.7

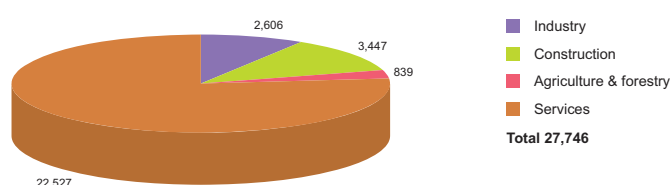
Source: Czech Statistical Office, Ministry of Labour and Social Affairs

## NUMBER OF JOB SEEKERS ACCORDING TO EDUCATION



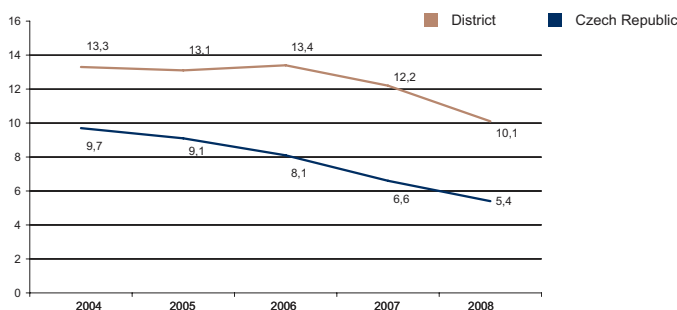
Source: Ministry of Labour and Social Affairs

## NUMBER OF ECONOMIC UNITS ACCORDING TO PREVAILING ACTIVITY



Source: Czech Statistical Office

## UNEMPLOYMENT - 5 YEAR TREND (%/YEAR)



Source: Czech Statistical Office

## FOREIGN DIRECT INVESTMENT

	FDI (CZK)	FDI (EUR)
Ústí nad Labem	10 186 058	382 647
CR (total)	2 032 111 185	76 337 761
Prague	1 049 062 899	39 408 824
Usti Average	14 975 852	562 579

Source: Czech National Bank

## IMPORTANT COMPANIES IN THE DISTRICT ACCORDING TO TURNOVER

Name of company	Location	Employees	Activity (Sector)	Turnover	www
Setuza, a.s.	Ústí nad Labem - Střekov	500 - 999	Manufacture of refined oils and fats	15 330	www.setuza.cz
Spolek pro chemickou a hutní výrobu,	Ústí nad Labem - město	1000 - 1499	Manufacture of plastics in primary forms	5 073	
Viamont DSP, a.s.	Ústí nad Labem - Střekov	200 - 249	Construction of motorways, roads, airfields and sport facilities	3 487	www.viamont.cz/dsp
ŠČP Net, s.r.o.	Ústí nad Labem-město - Kliše 25	49	Manufacture of gas; distribution of gaseous fuels through mains	2 425	www.rwe-scpnet.cz
ArcelorMittal - Stainless Automotive	Ústí nad Labem-město - Předlice100 - 199		Manufacture of steel tubes	2032	www.matthey.cz
Drinks Union, a.s.	Ústí nad Labem	1 - 5	Manufacture of beer	1 906	
Reichhold CZ, s.r.o.	Ústí nad Labem - město	20 - 24	Manufacture of other inorganic basic chemicals	1 685	www.reichhold.com
KS Kolbenschmidt Czech Republic, a. s.	Trmice	500 - 999	Manufacture of parts and accessories for motor vehicles and their engines	1 655	www.metal.cz
Měď Povrly, a.s.	Povrly	250 - 499	Copper production	1 569	www.medpovrly.cz
Severočeská plynárenská, a.s.	Ústí nad Labem-město - Kliše250 - 499		Distribution and trade of gaseous fuels through mains	1500 mil. and more	www.rwe-scp.cz
Četrans, a.s.	Ústí nad Labem - město	1000 - 1499	Freight transport by road	1 306	www.cetrans.cz
Klement, a.s.	Řehlovice - Hlíňany	100 - 199	General construction of buildings and civil engineering works	1 158	www.klementas.cz
Viamont, a.s.	Ústí nad Labem - Střekov	250 - 499	Transport via railways	1000 - 1499 mil.	www.viamont.cz
Finosa, s.r.o.	Ústí nad Labem-město - Předlice50 - 99		Wholesale of tobacco products	1000 - 1499 mil.	www.finosa.cz
EVROMat, a.s.	Ústí nad Labem - město	n/a	Wholesale of wood, construction materials and sanitary equipment	1000 - 1499 mil.	www.evromat.as
Kone Industrial - koncern, s.r.o.	Ústí nad Labem-město - Předlice250 - 499		Letting of own property	972	
North Video, s.r.o.	Ústí nad Labem - Střekov	50 - 99	Renting of personal and household goods n.e.c.	796	www.northvideo.cz
Black & Decker (Czech) , s.r.o.	Trmice	500 - 999	Manufacture of electrical equipment n.e.c.	690	www.blackanddecker.cz
Pierburg, s.r.o.	Ústí nad Labem-město - Předlice100 - 199		Manufacture of other general purpose machinery n.e.c.	637	
Chabařovické strojírný, a.s.	Chabařovice	250 - 499	Manufacture of parts and accessories for motor vehicles and their engines	551	www.intier.com