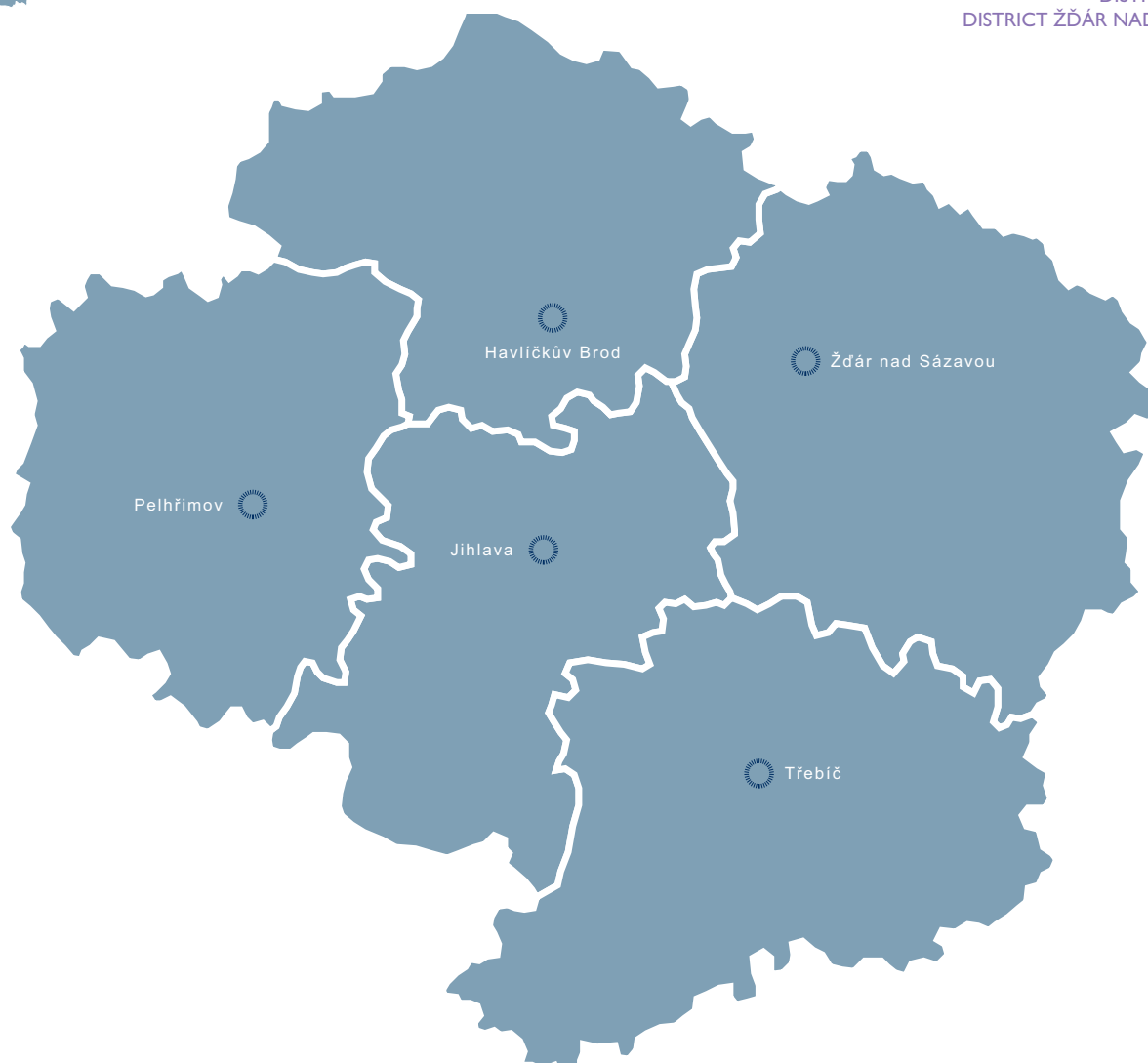


VYSOČINA REGION

DISTRICT HAVLÍČKŮV BROD
 DISTRICT JIHLAVA
 DISTRICT PELHŘIMOV
 DISTRICT TŘEBÍČ
 DISTRICT ŽDÁR NAD SÁZAVOU



ABOUT REGION

The Vysočina Region is situated in the southern half of the country, astride over the boundary between both the historic countries of the Czech crown. It borders with regions Central Bohemia, Pardubice, South Moravia and South Bohemia. The region is divided among five districts: Havlíčkův Brod, Jihlava, Pelhřimov, Třebíč and Žďár nad Sázavou.

Its area is 6,796 km², about 8.6 % of the national territory, making it the 5th largest region in the country. - As of H1 2009 there were 515,295 inhabitants (4.9 % of the population of the Czech Republic, 11th most populated region in the country). There are 704 communities in the Vysočina Region, 11.3 % of all communities in the Czech Republic. In this respect the region of the Vysočina Region assumes 2nd place in the country but its communities are mostly very small. Jihlava, with population of 50,916, is the regional capital. There are 18 towns with populations exceeding 5,000 in the Vysočina Region.

There are two protected landscape areas – Žďárské vrchy and Železné hory in the Vysočina Region. The region is well suited for tourism throughout the year. The best conditions for skiing can be found around Nové Město na Moravě, the venue of a regular World Cup cross-country ski race Zlatá lyže Vysočiny (Golden ski of the Highlands).

Thanks to its well preserved nature, the region is a coveted area of agro- and eco-tourism. There are three UNESCO registered landmarks. The ol-

dest registration is that of the historic center of the town of Telč, and then there is a traditional pilgrimage venue in the church of St. Jan Nepomucký in Zelená hora. The third item in the region was put on the UNESCO list only in 2003: Jewish Town and basilica of St. Prokop in Třebíč. In Jihlava, Třebíč and Telč, there are also urban sanctuaries.

Public universities were lacking for a long time in the Vysočina Region. A remedy for this deficiency was found in 2004 when the College of Polytechnics in Jihlava was made available for the public. For private universities there is Západomoravská vysoká škola (West Moravia University) in Třebíč, focused exclusively on IT disciplines at present. Many businesses in the region are contributing to scholarships for students in order to keep an educated workforce within the region.

Although the Vysočina Region was focused mostly on farming and forestry for a long time, there are industries developing there. Among the most important industries are machinery, energy, production of parts for car making factories and partially also the food industry and glassmaking.

Potential of the region: traditional farming production, optimal conditions for production of selected crops, transportation lines of European importance, placement of new machinery businesses, gradual development of universities, UNESCO World heritage landmarks, developing eco-tourism.

BASIC DATA

| | |
|-----------|-----------------------|
| Land Area | 6,796 km ² |
|-----------|-----------------------|

ACTUAL SITUATION ON LABOUR MARKET

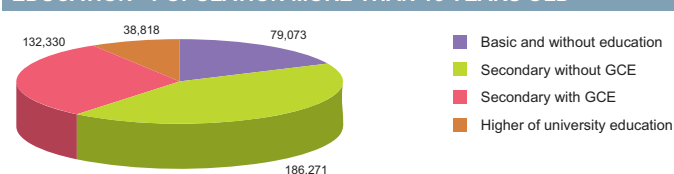
| | |
|--|---------|
| Population | 515,295 |
| Percentage in the total population of Czech Republic (%) | 4.9 |
| Population density (person/km ²) | 75.8 |
| Workforce | 270,969 |
| Number of job seekers | 23,092 |
| Unemployment rate (%) | 8.3 |

Source: Czech Statistical Office, Ministry of Labour and Social Affairs

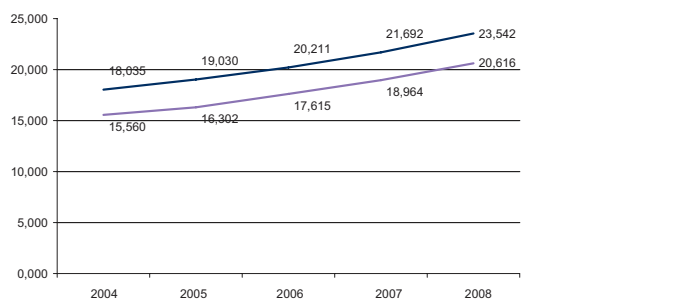
NUMBER OF ECONOMIC UNITS ACCORDING TO PREVAILING ACTIVITY

| | |
|------------------------|----------------|
| Total | 101,703 |
| Industry | 15,372 |
| Construction | 12,686 |
| Agriculture & forestry | 10,838 |
| Services | 62,221 |

Source: Czech Statistical Office

EDUCATION - POPULATION MORE THAN 15 YEARS OLD


Source: Czech Statistical Office

AVERAGE GROSS MONTHLY WAGES - 5 YEAR TREND (CZK/YEAR)


Source: Czech Statistical Office

GDP BY REGIONS

| Region | TOTAL | | Per capita | |
|------------------------------------|----------|----------|------------|-----------|
| | mIn. CZK | mIn. EUR | Total CZK | Total EUR |
| Vysočina | 147 554 | 5 916 | 287 879 | 10 368 |
| Average GDP for Czech regions | 252 161 | 10 110 | 341 989 | 13 711 |
| Share in GDP of the Czech Republic | 4% | | | |

Source: Czech Statistical Office

ADMINISTRATIVE BREAKDOWN

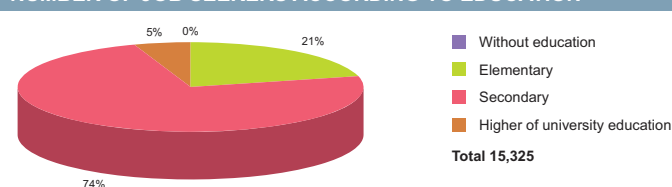
| | |
|--------------------------|-----|
| Number of districts | 5 |
| Number of municipalities | 704 |
| of that, number of towns | 34 |

Source: Czech Statistical Office

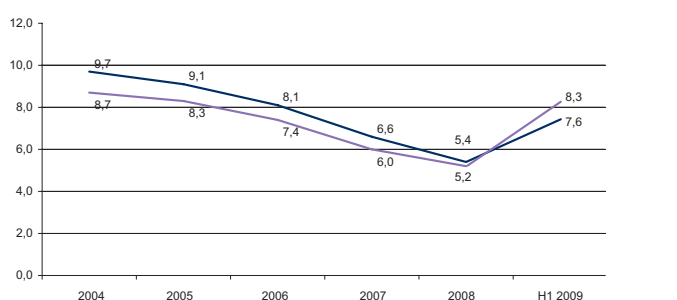
NUMBER OF EMPLOYEES AND GROSS MONTHLY WAGES IN MANUFACTURING ACCORDING TO NACE CLASSIFICATION

| | Number of employees | Wages (EUR) |
|---|---------------------|-------------|
| Manufacturing | 54,159 | 898 |
| Man. of food products, beverages and tobacco products | 5,738 | 771 |
| Man. of chemical, chemical products, pharmaceuticals, and chemical fibres | N/A | N/A |
| Man. of rubber and plastic products | 1,965 | 845 |
| Man. of basic metals and fabricated metal products | 9,604 | 886 |
| Man. and repairs of machinery and equipment | 6,856 | 895 |
| Man. of electrical and optical equipment | 7,693 | 915 |
| Man. of transport equipment | 11,547 | 1,080 |

Source: Czech Statistical Office

NUMBER OF JOB SEEKERS ACCORDING TO EDUCATION


Source: Ministry of Labour and Social Affairs

UNEMPLOYMENT - 5 YEAR TREND (%/YEAR)


Source: Czech Statistical Office

FOREIGN DIRECT INVESTMENT

| Region | FDI (CZK) | FDI (EUR) |
|----------|---------------|------------|
| min. | 17 940 192 | 673 937 |
| Vysočina | 63 756 538 | 2 395 062 |
| max. | 1 049 062 899 | 39 408 824 |
| Average | 145 150 799 | 5 452 697 |

Source: Czech National Bank

AVERAGE GROSS MONTHLY WAGES - 5 YEAR TREND

| Year | 2004 | | 2005 | | 2006 | | 2007 | | 2008 | |
|----------------------------|--------|-----|--------|-----|--------|-----|--------|-----|--------|-----|
| | CZK | EUR | CZK | EUR | CZK | EUR | CZK | EUR | CZK | EUR |
| Vysočina | 15,560 | 488 | 16,302 | 547 | 17,615 | 621 | 18,964 | 683 | 20,616 | 827 |
| Average for Czech Republic | 18,035 | 565 | 19,030 | 639 | 20,211 | 713 | 21,692 | 781 | 23,542 | 944 |

Source: Czech Statistical Office

LIST OF AIRPORTS

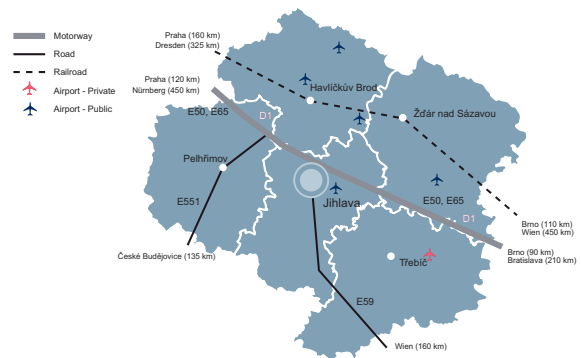
| | Specification | | |
|----------------|----------------|-----------------------|----------------------------|
| | Public/Private | Civil/Military/Varied | International/Intrnational |
| Havlíčkův Brod | Public | Civil | Intrnational |
| Chotěboř | Public | Civil | Intrnational |
| Jihlava | Public | Civil | Intrnational |
| Křižanov | Public | Civil | Intrnational |
| Náměšť | Private | Military | International |
| Přibyslav | Public | Civil | Intrnational |

Source: Ministry of Transport, Aerobaze.cz

SCHOOL SYSTEM

| | Number of schools | Number of students | Number of graduates |
|--------------------------|-------------------|--------------------|---------------------|
| Secondary schools | | | |
| Technical fields | n/a | 7 468 | 1 885 |
| Economic fields | n/a | 7 751 | 1 994 |
| ICT fields | n/a | 1 764 | 451 |
| Higher schools | | | |
| Technical fields | n/a | 214 | 39 |
| Economic fields | n/a | 339 | 128 |
| ICT fields | n/a | 68 | 27 |
| Universities | | | |
| Technical fields | 1 | 257 | n/a |
| Economic fields | 1 | 1 004 | 91 |
| ICT fields | 2 | 257 | 11 |

Source: Institute for Information on Education



LABOUR OFFICE

| City | Address | Phone | Fax | E-mail |
|------------------|---|-------------|-----------------------------|------------------------|
| Havlíčkův Brod | Jihlavská 42, 580 01 Havlíčkův Brod 1 | 950 114 111 | 569 475 342, 569 475 234 | podatelna@hb.mpsv.cz |
| Jihlava | Brtnická 2531/21, 586 01 Jihlava 1 | 567 128 111 | 567 309 965 | sekretariat@ji.mpsv.cz |
| Pelhřimov | Pražská 127, 393 01 Pelhřimov | 565 351 111 | 565 324 488 | pelhrimov@pe.mpsv.cz |
| Třebíč | Komenského nám. 1189/8, 674 01 Třebíč 1 | 568 404 611 | 568 843 118 | posta@tr.mpsv.cz |
| Žďár nad Sázavou | Strojírenská 2210/28, 591 01 Žďár nad Sázavou 1 | 566 685 111 | 566 620 771, 566 620 198 | zdams@zr.mpsv.cz |

Source: Ministry of Labour and Social Affairs

IMPORTANT CONTACTS IN THE REGION

Regional Council

Žižkova 57, 58733 Jihlava
tel.: 564 602 111, fax: 564 602 420
fax: 567 310 044
Email: kancelar.primatora@jihlava-city.cz
kancelar.tajemnika@jihlava-city.cz
URL: www.kr-vysocina.cz, www.jihlava.cz

CzechInvest - Regional Office

Komenského 31, 586 01 Jihlava
tel.: 567 155 197, 567 155 198
fax: 567 300 703
Email: jihlava@czechinvest.org
Contact persons: Bc. Kamila Malá, Ing. Hana Medřická

Regional Development Agency – Vysočina

Jihlava, 586 01 Křížová 2
tel.: 567 578 500, 567 578 501
fax: 567 578 501
Email: region@rrav.cz
URL: www.rrav.cz

Regional Consulting & Information

Center - Jihlava
Benešova 13, 586 01 Jihlava
tel.: 567 309 320, fax: 567 309 320
Email: hkjihlava@hkjihlava.cz
URL: www.hkjihlava.cz
Contact person: Ing. Tomáš Prchal

Regional Consulting & Information

Center - RPIC IPI
Strojírenská 34, 591 01 Žďár nad Sázavou
tel.: 566 651 011, fax: 566 626 557
Email: kancelar@ipi.cz
URL: www.ipi.cz
Contact person: Jiří Novotný

Regional Consulting & Information

Center - TEMPO-českomoravská auditorská s.r.o.
Údolní 54, 602 00 Brno
branch Humpolec:
Poděbradova 476, 396 01 Humpolec
tel.: 565 533 506, 565 543 246
fax: 565 533 506, 565 543 211
Email: info@malimanek.cz
URL: www.malimanek.cz
Contact person: Ing. Pavel Malimánek

CzechTrade - Regional Information

Center – Jihlava
Výstaviště 1, Brno 648 04
tel.: 724 613 800
Email: dagmar.matejkova@czechtrade.cz
URL: www.czechtrade.cz, www.komora.cz
Contact person: Ing. Dagmar Matějková, MBA

Regional Economic Chamber – Jihlava

Benešova 13, 586 01 Jihlava
tel.: 567 309 320
fax: 567 309 320
Email: hkjihlava@hkjihlava.cz
URL: www.hkjihlava.cz
Contact person: Ing. Tomáš Prchal

UTILITIES

GAS

Jihomoravská plynárenská, a.s.

for Eastern part of the region
Plynárenská 499/1, 657 02 Brno
tel.: 545 548 111, 840 11 33 55
fax: 545 578 571
Email: info@rwe.cz
URL: www.rwe.cz

Jihočeská plynárenská, a.s.

for South-Western part of the region
F.A.Gerstnera 2151/6, 370 49 České Budějovice
tel.: 389 100 111, 840 111 333
fax: 389 100 213
Email: info@eon.cz
URL: www.eon.cz

Východočeská plynárenská, a.s.

for North-Western part of the region
Pražská třída 702/17, 500 04 Hradec Králové
tel.: 495 060 111, 840 11 33 55
fax: 495 532 745
Email: info@rwe.cz
URL: www.rwe.cz

ELECTRICITY

E.ON Česká republika, a.s.

for Eastern part of the region
Lidická 36, 659 44 Brno
tel.: 840 111 333
Email: info@eon.cz
URL: www.eon.cz

E.ON Česká republika, a.s.

for South-Western part of the region
F.A.Gerstnera 2151/6, 370 49 České Budějovice
tel.: 840 111 333
Email: info@eon.cz
URL: www.eon.cz

Východočeská energetika, a.s.

for North-Western part of the region
Sladkovského 215, 501 03 Hradec Králové
tel.: 495 841 111, 840 840 840
fax: 495 842 198
Email: info@vce.cz
URL: www.vce.cz

WATER AND SEWER SYSTEM

Vodárenská akciová společnost, a.s.,
divize Jihlava

Žižkova 93, 586 29 Jihlava
tel.: 567 569 111
fax: 567 308 421
Email: sekretariat@vasji.cz
URL: www.vodarenska.cz

Vodovody a kanalizace Havlíčkův Brod, a.s.

Žižkova 832, 580 01 Havlíčkův Brod
tel.: 569 430 211
fax: 569 430 299
Email: vakhb@vakhb.cz
URL: www.vakhb.cz

VODAK Humpolec, s.r.o.

Pražská 544, 396 30 Humpolec
tel.: 565 533 381
fax: 565 533 307
Email: sekretariat@vodakhu.cz
URL: www.vodakhu.cz

HEAT

Novoměstská teplárenská, a.s.

Hornická 973, 592 31 Nové Město na Moravě
tel.: 566 617 004
fax: 566 617 274
Email: energetik@nmp.cz
URL: www.nmp.cz

Satt, a.s.

Okružní 1889/11, 591 01 Žďár nad Sázavou
tel.: 566 654 811, 777 734 903
fax: 566 623 268
Email: info@satt.cz
URL: www.satt.cz

TTS energo, s.r.o.

Průmyslová 163, 674 01 Třebíč
tel.: 568 837 611, fax: 568 840 035
Email: info@tts.cz
URL: www.tts.cz

| IMPORTANT COMPANIES IN THE REGION ACCORDING TO TURNOVER | | | | | | | |
|---|--------------------------|-------------|--|----------|-----------------------------|-----------------------------|-----------------------|
| Name of company | Location | Employees | Activity (Sector) | Turnover | Phone | E-mail | WWW |
| Bosch Diesel, s.r.o. | Jihlava - Pávov | 5000 - 9999 | Manufacture of parts and accessories for motor vehicles and their engines | 23 913 | 567 581 111, 567 585 555 | bosch.diesel@cz.bosch.com | www.bosch.cz |
| Kronospan CR, s.r.o. | Jihlava | 250 - 499 | Manufacture of veneer sheets; manufacture of plywood, laminboard, particle board, fibre board and other panels and board | 6 442 | 567 124 363, 567 124 204 | obchod@kronospan.cz | www.kronospan.cz |
| Draka Kabely, s.r.o. | Velké Meziříčí | 500 - 999 | Manufacture of insulated wire and cable | 5 988 | 566 501 511, 566 521 362 | info@draka.cz | www.draka.cz |
| V - Elektra, s.r.o. | Velké Meziříčí | 1 - 5 | Distribution and trade of electricity | 5 102 | 566 521 400, 434 260 111 | v-elektra@v-elektra.com | www.v-elektra.com |
| Stora Enso Timber Ždírec, s.r.o. | Ždírec nad Doubravou | 250 - 499 | Sawmilling and planing of wood; impregnation of wood | 4 456 | 569 776 611, 569 776 601 | jiri.polansky@storaenso.com | www.storaenso.com |
| Žďas, a.s. | Žďár nad Sázavou 1 | n/a | Manufacture of basic iron and steel and of ferro-alloys | 4 043 | 566 641 111, 566 643 044 | zdas@zdas.cz | www.zdas.cz |
| Kostecké uzeniny, a.s. | Kostelec | 1500 - 1999 | Production of meat and poultrymeat products | 3 848 | 567 577 050, 567 577 111 | obchod@ku.cz | www.ku.cz |
| Kronospan OSB, s.r.o. | Jihlava | 50 - 99 | Manufacture of veneer sheets; manufacture of plywood, laminboard, particle board, fibre board and other panels and board | 3 487 | 567 124 204, 567 124 253 | prodej@kronospan.cz | www.kronospan.cz |
| PSJ, a.s. | Jihlava | 250 - 499 | Management activities of holding companies | 3 272 | 567 550 349, 543 210 030 | psj@psj.cz | www.psj.cz |
| ITW Pronovia, s.r.o. | Velká Bíteš | 500 - 999 | Manufacture of plastic components for productive consumption | 3 008 | 566 501 837, 566 501 829 | info.vb@vbs.itw-deltar.com | www.itw-deltar.com |
| Mann + Hummel (CZ), s.r.o. | Nová Ves | 500 - 999 | Manufacture of other general purpose machinery n.e.c. | 2 613 | 568 898 533, 568 898 552 | info@mannfilter.cz | www.mannfilter.cz |
| Dřevopracující družstvo | Lukavec | n/a | Manufacture of veneer sheets; manufacture of plywood, laminboard, particle board, fibre board and other panels and board | 2 536 | 565 411 264, 565 411 224 | ddl@ddl.cz | www.ddl.cz |
| JAS ČR, a.s. | Jihlava | 50 - 99 | Non-specialized wholesale of food, beverages and tobacco | 2 480 | 567 563 537, 567 563 534 | paha@jas-cr.cz | www.jas-cr.cz |
| IMI International, s.r.o. | Humpolec | 250 - 499 | Manufacture of taps and valves | 2 009 | 565 533 605, 565 533 910 | info@imi-international.cz | |
| Edscha Bohemia, s.r.o. | Kamenice nad Lipou | 250 - 499 | Manufacture of parts and accessories for motor vehicles and their engines | 2 006 | 565 424 222, 565 424 140 | edscha@edscha.cz | www.edscha.cz |
| GCE, s.r.o. | Chotěboř | 500 - 999 | Manufacture of locks and hinges | 1 780 | 569 661 111, 569 661 122 | | www.gce.cz |
| Motorpal, a.s. | Jihlava - Staré Hory | 1500 - 1999 | Manufacture of parts and accessories for motor vehicles and their engines | 1 745 | | jmorkus@motorpal.cz | www.motorpal.cz |
| Tedom s.r.o. | Výčapy | 250 - 499 | Manufacture of electric motors, generators and transformers | 1 681 | 568 837 211, 568 837 111 | tedom@tedom.cz | www.tedom.cz |
| Moravské kovárny, a.s. | Jihlava - Hruškové Dvory | 500 - 999 | Forging, pressing, stamping and roll forming of metal; powder metallurgy | 1 656 | 567 120 111, 567 120 400 | info@mokov.cz | www.mokov.com |
| Schäfer - Sudex, s.r.o. | Ledeč nad Sázavou | 100 - 199 | Manufacture of steel drums and similar containers | 1 654 | 569 711 222, 569 711 290 | info@schaefer-sudex.cz | www.schaefer-sudex.cz |

Source: Albertina Company Monitor

| KNOWLEDGE OF FOREIGN LANGUAGES | | | |
|--------------------------------|----------------------|------------------|----------------------|
| LANGUAGE | ALL SKILLS LEVEL (%) | LANGUAGE | ALL SKILLS LEVEL (%) |
| English | 56.6 | Spanish | 5.3 |
| German | 58.4 | Polish | 6.2 |
| French | 7.1 | Russian | 48.7 |
| Italian | 4.4 | Nordic languages | 0.0 |

Source: Augur Consulting

| LIST OF UNIVERSITIES 2009 | | | | |
|------------------------------------|--------------|---|----------------|----------|
| Name of school | WWW | Orientation | Titles awarded | Students |
| Vysoká škola polytechnická Jihlava | www.vspji.cz | Informatics, tourism, finance, management, computer systems | Bc., Mgr. | 2 205 |
| Západomoravská vysoká škola Třebíč | www.zmvs.cz | Management, statutory study, information technology | Bc. | 354 |

Source: Institute for Information on Education

RENTS IN INDUSTRIAL PREMISES IN CR REGIONS (EUR/sqm/month)

| | |
|--|-----------|
| Vysočina Region | 3,75-4,25 |
| Note 1: Net effective rents for units ca 4,000 sq m which is average deal size in the market | |
| Note 2: Premises are immediately available only some regions. | |

Source: CB Richard Ellis

PRIME RENTS IN SHOPPING CENTRES (EUR/sqm/month)

| | |
|-----------------------------|-------|
| Vysočina Region | 20-25 |
| Note: for units ca 100 sqm. | |

Source: CB Richard Ellis

CBRE
 Commercial Real Estate
 224 814 060
 www.cbrcr.cz

INDUSTRIAL PARKS IN THE CZECH REPUBLIC

| Project | Region | City/ Town | Total Area (warehouse + office) | Year of Completion |
|-----------------------------|----------|-------------|---------------------------------|--------------------|
| CTPark Humpolec | Vysočina | Humpolec | 38 617 | 2008 |
| CTPoint Jihlava | Vysočina | Jihlava | 22 877 | n/a |
| CTPoint Okříšky | Vysočina | Třebíč | 12 886 | 2007 |
| Logistický park Velká Bíteš | Vysočina | Velká Bíteš | 4 892 | 2007 |

Note: Date of completions highlighted in red - we don't know the beginning of completion

Source: CB Richard Ellis

CBRE
 Commercial Real Estate
 224 814 060
 www.cbrcr.cz

SELECTED INDUSTRIAL ZONES IN THE VYSOČINA REGION

| Industrial zone | Area (ha) |
|---|-----------|
| Baštinov - Havlíčkův Brod | 10,60 |
| Bystřice nad Pernštejnem - průmyslová zóna II | 60,00 |
| Jamská ve Žďáře nad Sázavou - PZ | 30,00 |
| Jihlava | 45,00 |
| Jihlava - D1 průmyslový park | 75,00 |
| Kamenice nad Lipou - Gabrielka | 13,09 |
| Ledeč nad Sázavou - průmyslová zóna | 12,50 |
| Pelhřimov - Lhotka II. | 30,00 |
| Světlá nad Sázavou | 10,50 |
| Třebíč | 11,40 |
| Třebíč - Hrotovická | 11,37 |
| Velké Meziříčí | 15,00 |
| Ždírec nad Doubravou I - Jih | 14,05 |
| Ždírec nad Doubravou II - Sever | 22,96 |

Source: CzechInvest

SELECTED CZECHINVEST PROJECTS IN THE REGION

| Name | Location | Investor | Country | Sector | Year |
|--------------------------------------|-----------------------|--------------------------------|----------------|-------------------------------|------|
| ADW Bio, a.s. | Krahulov | ADW Holding | Czech Republic | chemistry, pharmacy | 2005 |
| Automotive Lighting s.r.o. | Pávov | Automotive Lighting Reutlingen | Germany | manufacture of motor vehicles | 2006 |
| BOSCH DIESEL s.r.o. | Jihlava | Robert Bosch | Germany | manufacture of motor vehicles | 2000 |
| Futaba Czech, s.r.o. | Jihlava | Futaba | Japan | manufacture of motor vehicles | 2002 |
| HARTMANN - RICO a.s. | n.s. | Hartmann-Rico | Germany | other | 2001 |
| Holzwerke WIMMER s.r.o. | Ždírec nad Doubravkou | Holzwerke | Germany | paper, wood processing | 2000 |
| Jihlavské sklárny BOHEMIA, a.s. | Jihlava | Jihlavské sklárny | Czech Republic | other | 2001 |
| JOPP Automotive s.r.o. | Velké Meziříčí | JOPP GmbH | Germany | manufacture of motor vehicles | 2008 |
| KRONOSPAN OSB, spol. s r.o. | Jihlava | Kronospan | Cyprus | paper, wood processing | 2004 |
| Magna Cartech spol. s r.o. | Česlé Velenice | MAGNA Presstec | Austria | metal products | 2005 |
| MANN + HUMMEL (CZ) s.r.o. | Nová Ves | MANN+HUMMEL | Germany | manufacture of motor vehicles | 2006 |
| Steel Center Europe, s.r.o. | Humpolec | Sumitomo | Japan | engineering | 2003 |
| Stora Enso Timber Ždírec, s.r.o. | Ždírec nad Doubravou | Schweighofer | Austria | paper, wood processing | 1996 |
| Wiegel CZ Žárové zinkování s.r.o. | Žďár nad Sázavou | Wiegel Tschechia | Germany | engineering | 2001 |
| Zexel Valeo Compressor Czech, s.r.o. | Humpolec | Zexel Valeo | Japan | manufacture of motor vehicles | 2002 |

Source: CzechInvest



DISTRICT HAVLÍČKŮV BROD

| BASIC DATA | |
|------------|-----------------------|
| Land Area | 1,265 km ² |

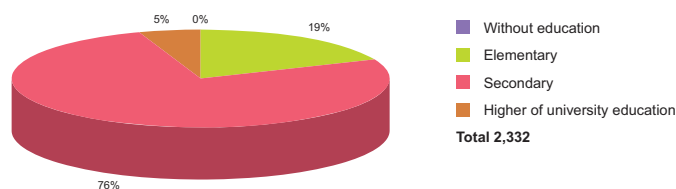
| TOWNS WITH POPULATION OVER 5,000 | | | |
|----------------------------------|--------|--------------------|-------|
| Havlíčkův Brod | 24,506 | Světlá nad Sázavou | 6,972 |
| Chotěboř | 9,907 | Ledeč nad Sázavou | 5,831 |

Source: Czech Statistical Office

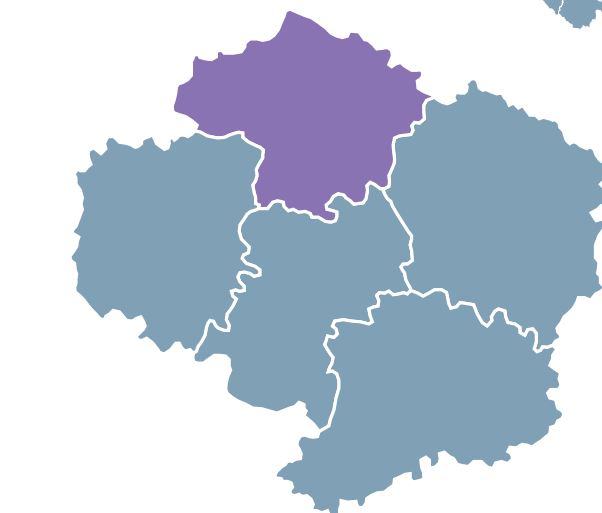
| ACTUAL SITUATION ON LABOUR MARKET | |
|--|--------|
| Population | 96,055 |
| Percentage in the total population of Czech Republic (%) | 18.6 |
| Population density (person/km ²) | 75.9 |
| Workforce | 49,408 |
| Number of job seekers | 4,361 |
| Unemployment rate (%) | 8.5 |

Source: Czech Statistical Office, Ministry of Labour and Social Affairs

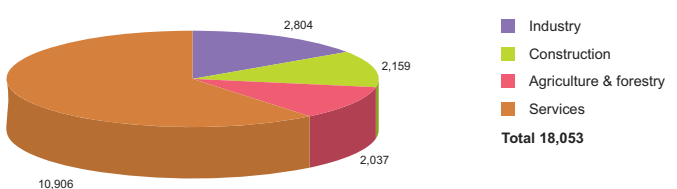
NUMBER OF JOB SEEKERS ACCORDING TO EDUCATION



Source: Ministry of Labour and Social Affairs

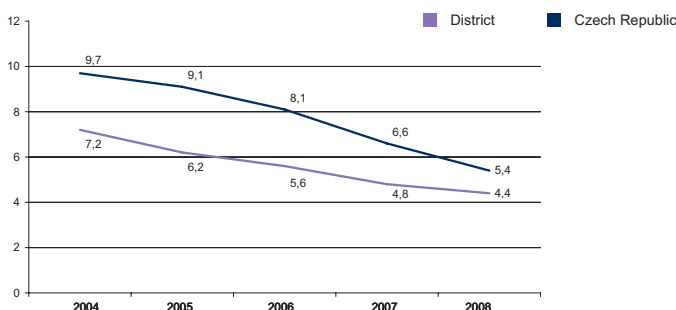


NUMBER OF ECONOMIC UNITS ACCORDING TO PREVAILING ACTIVITY



Source: Czech Statistical Office

UNEMPLOYMENT - 5 YEAR TREND (%/YEAR)



Source: Czech Statistical Office

FOREIGN DIRECT INVESTMENT

| | FDI (CZK) | FDI (EUR) |
|------------------|---------------|------------|
| Havlíčkův Brod | 6 621 705 | 248 749 |
| CR (total) | 2 032 111 185 | 76 337 761 |
| Prague | 1 049 062 899 | 39 408 824 |
| Vysočina Average | 12 751 308 | 479 012 |

Source: Czech National Bank

IMPORTANT COMPANIES IN THE DISTRICT ACCORDING TO TURNOVER

| Name of company | Location | Employees | Activity (Sector) | Turnover | www |
|---------------------------------------|--------------------------|-------------|---|--------------------|-----------------------|
| Stora Enso Timber Ždírec, s.r.o. | Ždírec nad Doubravou | 250 - 499 | Sawmilling and planing of wood; impregnation of wood | 4 456 | www.storaenso.com |
| GCE, s.r.o. | Chotěboř | 500 - 999 | Manufacture of locks and hinges | 1 780 | www.gce.cz |
| Schäfer - Sudex, s.r.o. | Ledeč nad Sázavou | 100 - 199 | Manufacture of steel drums and similar containers | 1 654 | www.schaefer-sudex.cz |
| Pleas, a.s. | Havlíčkův Brod | 1500 - 1999 | Manufacture of underwear | 1 539 | www.pleas.cz |
| Pribina, s.r.o. | Příbryslav | 250 - 499 | Operation of dairies and cheese making | 1 510 | www.pribina.cz |
| Futaba Czech, s.r.o. | Havlíčkův Brod - Mirovka | 500 - 999 | Manufacture of bodies (coachwork) for motor vehicles | 1500 mil. and more | www.fcz.cz |
| Pramen CZ, a.s. | Havlíčkův Brod | 500 - 999 | Retail sale in non-specialized stores with food, beverages or tobacco predominating | 1 165 | www.pramencz.cz |
| ACO Industries, k.s. | Příbryslav | 500 - 999 | Manufacture of other fabricated metal products n.e.c. | 1 162 | www.aco.cz |
| Ross Holding, s.r.o. | Havlíčkův Brod | 250 - 499 | General construction of buildings and civil engineering works | 1 046 | www.ross.cz |
| Sklo Bohemia, a.s. | Světlá nad Sázavou | 1500 - 1999 | Manufacture of crystal glass | 1000 - 1499 mil. | www.sklobohemia.cz |
| Dekora - Jeniček, a.s. | Ždírec nad Doubravou | 250 - 499 | Cotton-type weaving | 947 | www.dekora.cz |
| Jednota, obchodní a výrobní družstvo, | Havlíčkův Brod | 250 - 499 | Retail sale in non-specialized stores with food, beverages or tobacco predominating | 858 | www.jednotahb.cz |
| ZZN Havlíčkův Brod, a.s. | Havlíčkův Brod | 50 - 99 | Manufacture of prepared feeds for farm animals | 852 | www.zznhb.cz |
| Stora Enso Timber HV s.r.o. | Ždírec nad Doubravou | 250 - 499 | Sawmilling and planing of wood; impregnation of wood | 762 | www.storaenso.cz |
| Nápojová technika, s.r.o. | Chotěboř | n/a | Other wholesale | 542 | |
| Recycling - kovové odpady, a.s. | Chotěboř | 50 - 99 | Collection and treatment of sewage | 471 | |
| Tenez, a.s. | Chotěboř | n/a | Manufacture of tanks, reservoirs and containers of metal | 458 | www.tenez.cz |
| ECF elektrocentrum fabrik, s.r.o. | Havlíčkův Brod | 25 - 49 | Other wholesale | 443 | www.ecf-elektro.cz |
| Kovofinís KF, s.r.o. | Ledeč nad Sázavou | 250 - 499 | Retail sale in non-specialized stores with food, beverages or tobacco predominating | 403 | www.kovofinis.cz |

DISTRICT JIHLAVA



| BASIC DATA | |
|------------|-----------------------|
| Land Area | 1,180 km ² |

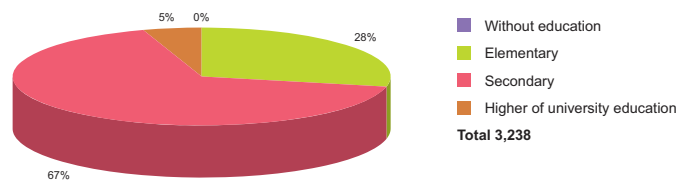
| TOWNS WITH POPULATION OVER 5,000 | | | |
|----------------------------------|--------|-------|-------|
| Jihlava | 50,795 | Telč | 5,716 |
| Třešť | 5,888 | Polná | 5,158 |

Source: Czech Statistical Office

| ACTUAL SITUATION ON LABOUR MARKET | |
|--|---------|
| Population | 111,974 |
| Percentage in the total population of Czech Republic (%) | 21.7 |
| Population density (person/km ²) | 94.9 |
| Workforce | 61,784 |
| Number of job seekers | 5,142 |
| Unemployment rate (%) | 8.1 |

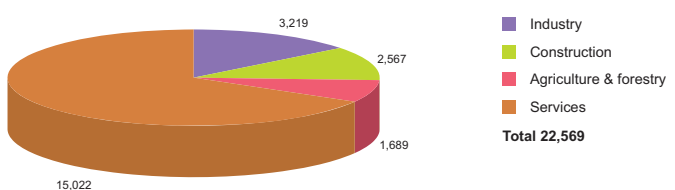
Source: Czech Statistical Office, Ministry of Labour and Social Affairs

NUMBER OF JOB SEEKERS ACCORDING TO EDUCATION



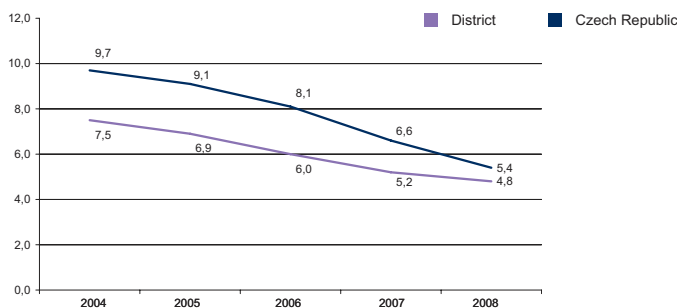
Source: Ministry of Labour and Social Affairs

NUMBER OF ECONOMIC UNITS ACCORDING TO PREVAILING ACTIVITY



Source: Czech Statistical Office

UNEMPLOYMENT - 5 YEAR TREND (%/YEAR)



Source: Czech Statistical Office

FOREIGN DIRECT INVESTMENT

| | FDI (CZK) | FDI (EUR) |
|------------------|---------------|------------|
| Jihlava | 19 429 165 | 729 871 |
| CR (total) | 2 032 111 185 | 76 337 761 |
| Prague | 1 049 062 899 | 39 408 824 |
| Vysocina Average | 12 751 308 | 479 012 |

Source: Czech National Bank

IMPORTANT COMPANIES IN THE DISTRICT ACCORDING TO TURNOVER

| Name of company | Location | Employees | Activity (Sector) | Turnover | www |
|--------------------------------|--------------------------|-------------|--|--------------------|--------------------------|
| Bosch Diesel, s.r.o. | Jihlava - Pávov | 5000 - 9999 | Manufacture of parts and accessories for motor vehicles and their engines | 23 913 | www.bosch.cz |
| Kronospan CR, s.r.o. | Jihlava | 250 - 499 | Manufacture of veneer sheets; manufacture of plywood, laminboard, particle board | 6 442 | www.kronospan.cz |
| Kostecké uzeniny, a.s. | Kostelec | 1500 - 1999 | Production of meat and poultrymeat products | 3 848 | www.ku.cz |
| Kronospan OSB, s.r.o. | Jihlava | 50 - 99 | Manufacture of veneer sheets; manufacture of plywood, laminboard, particle board | 3 487 | www.kronospan.cz |
| PSJ, a.s. | Jihlava | 250 - 499 | Management activities of holding companies | 3 272 | www.psj.cz |
| JAS ČR, a.s. | Jihlava | 50 - 99 | Non-specialized wholesale of food, beverages and tobacco | 2480 | www.jas-cr.cz |
| Motorpal, a.s. | Jihlava - Staré Hory | 1500 - 1999 | Manufacture of parts and accessories for motor vehicles and their engines | 1 745 | www.motorpal.cz |
| Moravské kovárny, a.s. | Jihlava - Hruškově Dvory | 500 - 999 | Forging, pressing, stamping and roll forming of metal; powder metallurgy | 1 656 | www.mokov.com |
| Icom transport, a.s. | Jihlava | 1000 - 1499 | Freight transport by road | 1 639 | www.icomtransport.cz |
| Tchibo Praha, s.r.o. | Jihlava | 250 - 499 | Processing of tea and coffee | 1500 mil. and more | www.tchibo.cz |
| Automotive Lighting, s.r.o. | Jihlava - Pávov | 1500 - 1999 | Manufacture of electrical equipment for engines and vehicles n.e.c. | 1500 mil. and more | www.al-lighting.cz |
| Sapeli, a.s. | Polná | 250 - 499 | Manufacture of builders' carpentry and joinery | 1 315 | www.zarubne.cz |
| Tönnies Fleisch CZ, s.r.o. | Jihlava | 1 - 5 | Other wholesale | 1 014 | |
| Správa a údržba silnic Jihlava | Jihlava | 100 - 199 | Other supporting land transport activities | 1000 - 1499 mil. | www.sus.ji.cz |
| Moravia Lacto, a.s. | Jihlava | 200 - 249 | Operation of dairies and cheese making | 1000 - 1499 mil. | www.moravialacto.cz |
| Kronodoor CZ, s.r.o. | Jihlava | 100 - 199 | Basic manufacture of builders' carpentry and joinery | 974 | www.kronodoor.cz |
| Podzimek a synové, s.r.o. | Třešť | 100 - 199 | General construction of buildings and civil engineering works | 972 | www.podzimek.cz |
| Tesla Jihlava, a.s. | Jihlava | 500 - 999 | General mechanical engineering | 914 | www.teslaji.cz |
| Swoboda CZ, s.r.o. | Jihlava - Hruškově Dvory | n/a | Manufacture of electrical equipment for engines and vehicles n.e.c. | 712 | www.swotes.cz |
| Agropodnik, a.s., Jihlava | Dobronín | 50 - 99 | Manufacture of other chemical substances | 509 | www.agropodnikjihlava.cz |



DISTRICT PELHŘIMOV

| BASIC DATA | |
|------------|-----------------------|
| Land Area | 1,290 km ² |

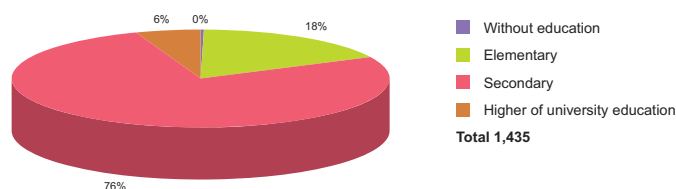
| TOWNS WITH POPULATION OVER 5,000 | |
|----------------------------------|--------|
| Pelhřimov | 16,610 |
| Humpolec | 11,112 |
| Pacov | 5,045 |

Source: Czech Statistical Office

| ACTUAL SITUATION ON LABOUR MARKET | |
|--|--------|
| Population | 73,242 |
| Percentage in the total population of Czech Republic (%) | 14.2 |
| Population density (person/km ²) | 56.8 |
| Workforce | 40,726 |
| Number of job seekers | 2,579 |
| Unemployment rate (%) | 6.1 |

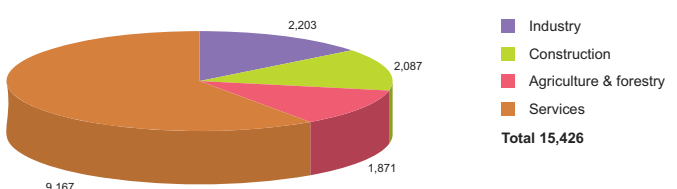
Source: Czech Statistical Office, Ministry of Labour and Social Affairs

NUMBER OF JOB SEEKERS ACCORDING TO EDUCATION



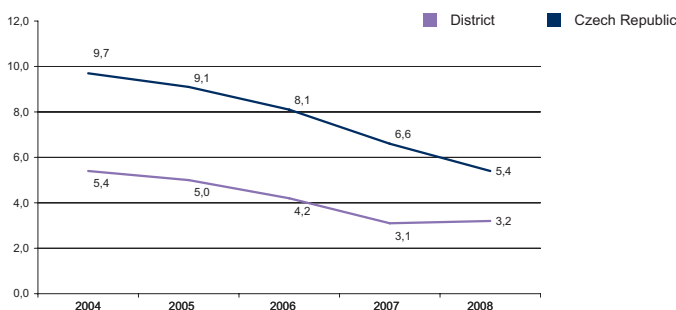
Source: Ministry of Labour and Social Affairs

NUMBER OF ECONOMIC UNITS ACCORDING TO PREVAILING ACTIVITY



Source: Czech Statistical Office

UNEMPLOYMENT - 5 YEAR TREND (%/YEAR)



Source: Czech Statistical Office

FOREIGN DIRECT INVESTMENT

| | FDI (CZK) | FDI (EUR) |
|------------------|---------------|------------|
| Pelhřimov | 28 279 407 | 1 062 337 |
| CR (total) | 2 032 111 185 | 76 337 761 |
| Prague | 1 049 062 899 | 39 408 824 |
| Vysocina Average | 12 751 308 | 479 012 |

Source: Czech National Bank

IMPORTANT COMPANIES IN THE DISTRICT ACCORDING TO TURNOVER

| Name of company | Location | Employees | Activity (Sector) | Turnover | www |
|--|--------------------|-----------|--|--------------------|------------------------|
| Dřevozpracující družstvo | Lukavec | n/a | Manufacture of veneer sheets; manufacture of plywood, laminboard, particle board | 2 536 | www.ddl.cz |
| IMI International, s.r.o. | Humpolec | 250 - 499 | Manufacture of taps and valves | 2 009 | |
| Edscha Bohemia, s.r.o. | Kamenice nad Lipou | 250 - 499 | Manufacture of parts and accessories for motor vehicles and their engines | 2 006 | www.edscha.cz |
| ZZN Pelhřimov a. s. | Pelhřimov | 50 - 99 | Manufacture of prepared feeds for farm animals | 1 583 | www.zznpe.cz |
| CTP Property, a.s. | Humpolec | n/a | Letting of own property | 1 566 | |
| Valeo Compressor Europe, s.r.o. | Humpolec | n/a | Manufacture of pumps and compressors | 1500 mil. and more | valeo.jobs.cz |
| Agrostroj Pelhřimov, a.s. | Pelhřimov | n/a | Manufacture of other agricultural and forestry machinery | 1500 mil. and more | www.agrostroj.cz |
| Spojené kartáčovny, a.s. | Pelhřimov | 250 - 499 | Manufacture of brooms and brushes | 810 | www.spokar.com |
| Edscha SVG, s.r.o. | Kamenice nad Lipou | 25 - 49 | Manufacture of parts and accessories for motor vehicles and their engines | 647 | www.edscha.cz |
| Inter Expres servis, s.r.o. | Humpolec | n/a | Courier activities other than national post activities | 617 | www.interexpres.cz |
| Gebr. Ostendorf - Osma zpracování | Komorovice | 50 - 99 | Manufacture of plastic products | 559 | www.osma-komorovice.cz |
| Humpolecké strojírny Humpolec, a.s. | Humpolec | 250 - 499 | Manufacture of lifting and handling equipment | 500 - 999 mil. | www.trac-lift.cz |
| Cerepa, a. s. | Červená Řečice | 100 - 199 | Manufacture of household and sanitary goods and of toilet requisites | 437 | www.cerepa.cz |
| Kana, s.r.o. | Pelhřimov | 100 - 199 | Other manufacturing n.e.c. | 415 | www.kana-pe.cz |
| Škrobárny Pelhřimov, a.s. | Pelhřimov | 100 - 199 | Manufacture of starches and starch products | 414 | www.skrobarny.cz |
| proTeam, s.r.o. | Pelhřimov | 100 - 199 | Other manufacturing n.e.c. | 362 | |
| I.Kamenická stavební a obchodní firma, | Kamenice nad Lipou | 100 - 199 | General construction of buildings and civil engineering works | 361 | www.kamenicka.cz |
| KOH - I - NOOR Hardtmuth Trade, a.s. | Pelhřimov | 100 - 199 | Wholesale of other household goods | 334 | www.koh-i-noor.eu |
| I P C plast, s.r.o. | Žirovnice | 100 - 199 | Manufacture of brooms and brushes | 334 | www.ipcplast.cz |
| Detail CZ, s.r.o. | Žirovnice | n/a | General mechanical engineering | 304 | www.detail-cz.cz |

DISTRICT TŘEBÍČ



BASIC DATA

| | |
|-----------|-----------------------|
| Land Area | 1,509 km ² |
|-----------|-----------------------|

TOWNS WITH POPULATION OVER 5,000

| | |
|---------------------|--------|
| Třebíč | 38,493 |
| Moravské Budějovice | 7,905 |
| Náměšť nad Oslavou | 5,116 |

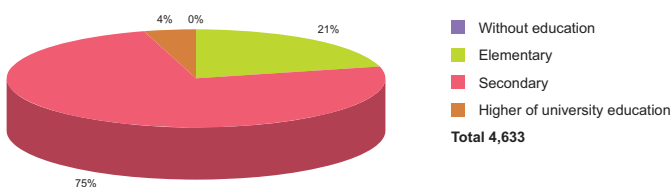
Source: Czech Statistical Office

ACTUAL SITUATION ON LABOUR MARKET

| | |
|--|---------|
| Population | 114,022 |
| Percentage in the total population of Czech Republic (%) | 22.1 |
| Population density (person/km ²) | 75.6 |
| Workforce | 57,990 |
| Number of job seekers | 6,006 |
| Unemployment rate (%) | 10.1 |

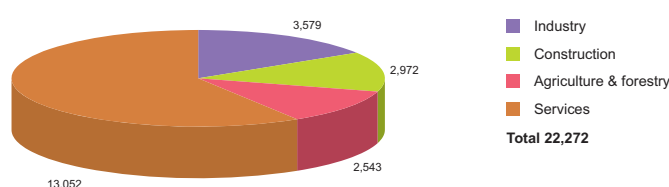
Source: Czech Statistical Office, Ministry of Labour and Social Affairs

NUMBER OF JOB SEEKERS ACCORDING TO EDUCATION



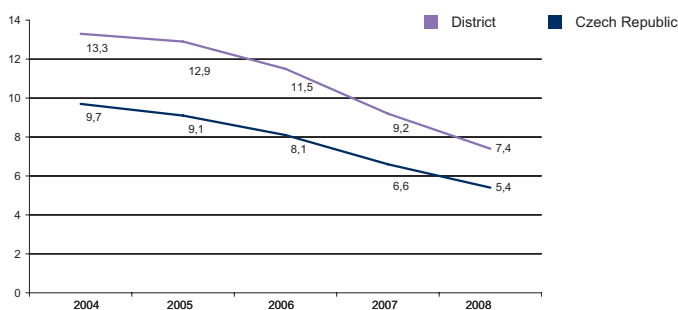
Source: Ministry of Labour and Social Affairs

NUMBER OF ECONOMIC UNITS ACCORDING TO PREVAILING ACTIVITY



Source: Czech Statistical Office

UNEMPLOYMENT - 5 YEAR TREND (%/YEAR)



Source: Czech Statistical Office

FOREIGN DIRECT INVESTMENT

| | FDI (CZK) | FDI (EUR) |
|------------------|---------------|------------|
| Třebíč | 2 719 236 | 102 150 |
| CR (total) | 2 032 111 185 | 76 337 761 |
| Prague | 1 049 062 899 | 39 408 824 |
| Vysočina Average | 12 751 308 | 479 012 |

Source: Czech National Bank

IMPORTANT COMPANIES IN THE DISTRICT ACCORDING TO TURNOVER

| Name of company | Location | Employees | Activity (Sector) | Turnover | www |
|-----------------------------------|-------------------------|-------------|---|------------------|------------------------|
| Mann + Hummel (CZ) , s.r.o. | Nová Ves | 500 - 999 | Manufacture of other general purpose machinery n.e.c. | 2 613 | www.mannfilter.cz |
| Tedom s.r.o. | Výčapy | 250 - 499 | Manufacture of electric motors, generators and transformers | 1 681 | www.tedom.cz |
| I & C Energo, a.s. | Třebíč - Borovina | 1000 - 1499 | Manufacture of electric motors, generators and transformers | 1 578 | www.cez.cz |
| Jaroměřická mlékárna, a.s. | Jaroměřice nad Rokytnou | 250 - 499 | Operation of dairies and cheese making | 1 475 | www.mlekarna.cz |
| PBS Industry, a.s. | Třebíč - Jejkov | 500 - 999 | Not known | 1 435 | |
| Outulný, a.s. | Náměšť nad Oslavou | 200 - 249 | General construction of buildings and civil engineering works | 1000 - 1499 mil. | www.outulny.cz |
| BEL Sýry Česko, a.s. | Želetava | 200 - 249 | Operation of dairies and cheese making | 1000 - 1499 mil. | www.zeletava.cz |
| Agro 2000, s.r.o. | Třebíč - Podklášteří | 10 - 19 | Wholesale of grain, seeds and animal feeds | 1000 - 1499 mil. | www.agro2000.cz |
| ADW Agro, a.s. | Krahulov | 100 - 199 | Manufacture of prepared feeds for farm animals | 1000 - 1499 mil. | www.adwagro.cz |
| JMB družstvo | Moravské Budějovice | 250 - 499 | Retail sale in non-specialized stores with food, beverages or tobacco predominating | 887 | |
| Agrovykup, a.s. | Moravské Budějovice | 50 - 99 | Manufacture of prepared feeds for farm animals | 827 | www.agrovykup.cz |
| Agrostyl CZ, s.r.o. | Třebíč - Vnitřní Město | 10 - 19 | Other farming of animals | 512 | www.agrostylcz.com |
| Huhtamaki Česká republika, a.s. | Přibyslavice | 100 - 199 | Manufacture of other articles of paper and paperboard n.e.c. | 500 - 999 mil. | www.huhtamaki.cz |
| Agrokop CZ, a.s. | Střítež | n/a | Wholesale of chemical products | 490 | www.agrokop.cz |
| Jipa Bauer, s.r.o. | Třebíč - Borovina | 10 - 19 | Other wholesale | 478 | bauerpavel.webpark.cz |
| Fraenkische CZ, s.r.o. | Okříšky | 200 - 249 | Manufacture of other special purpose machinery | 430 | www.fraenkische.de |
| Mlékařské odbytové centrum Třebíč | Třebíč - Horka-Domky | n/a | Wholesale of dairy produce, eggs and edible oils and fats | 418 | |
| Ferrum, s.r.o. | Moravské Budějovice | 50 - 99 | Wholesale of metals and metal ores | 415 | www.ferrum-mb.cz |
| Drubež - Vysočina, s.r.o. | Moravské Budějovice | n/a | Other wholesale | 405 | www.drubez-vysocina.cz |



DISTRICT ŽĎÁR NAD SÁZAVOU

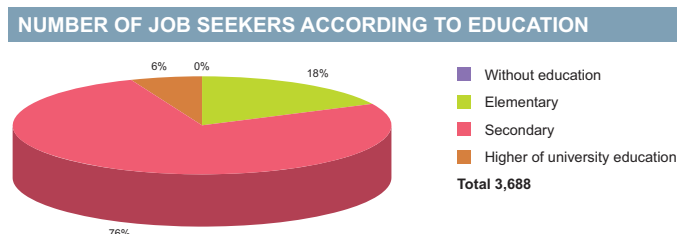
| BASIC DATA | |
|------------|-----------------------|
| Land Area | 1,552 km ² |

| TOWNS WITH POPULATION OVER 5,000 | | | |
|----------------------------------|--------|--------------------------|--------|
| Žďár nad Sázavou | 23,717 | Nové Město na Moravě | 10,653 |
| Velké Meziříčí | 11,804 | Bystřice nad Pernštejnem | 8,778 |

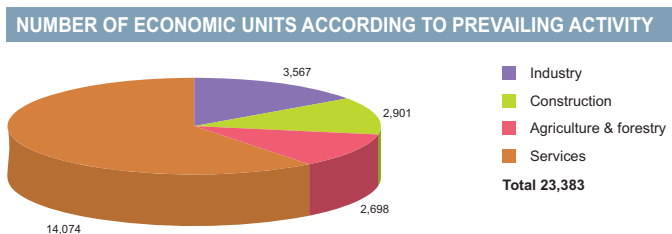
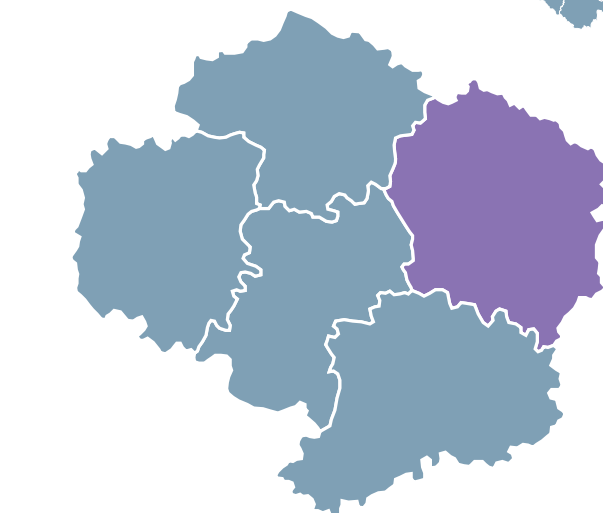
Source: Czech Statistical Office

| ACTUAL SITUATION ON LABOUR MARKET | |
|--|---------|
| Population | 120,001 |
| Percentage in the total population of Czech Republic (%) | 23.3 |
| Population density (person/km ²) | 77.3 |
| Workforce | 61,061 |
| Number of job seekers | 5,005 |
| Unemployment rate (%) | 8.0 |

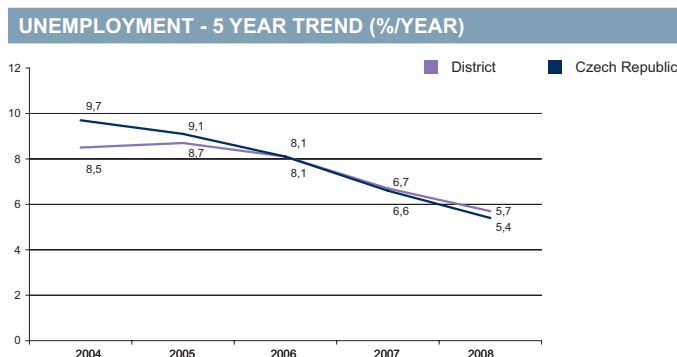
Source: Czech Statistical Office, Ministry of Labour and Social Affairs



Source: Ministry of Labour and Social Affairs



Source: Czech Statistical Office



Source: Czech Statistical Office

FOREIGN DIRECT INVESTMENT

| | FDI (CZK) | FDI (EUR) |
|------------------|---------------|------------|
| Žďár nad Sázavou | 6 707 025 | 251 954 |
| CR (total) | 2 032 111 185 | 76 337 761 |
| Prague | 1 049 062 899 | 39 408 824 |
| Vysocina Average | 12 751 308 | 479 012 |

Source: Czech National Bank

IMPORTANT COMPANIES IN THE DISTRICT ACCORDING TO TURNOVER

| Name of company | Location | Employees | Activity (Sector) | Turnover | www |
|---|--------------------------|-----------|---|--------------------|--------------------|
| Draka Kabely, s.r.o. | Velké Meziříčí | 500 - 999 | Manufacture of insulated wire and cable | 5 988 | www.draka.cz |
| V - Elektra, s.r.o. | Velké Meziříčí | 1 - 5 | Distribution and trade of electricity | 5 102 | www.v-elektra.com |
| Žďas, a.s. | Žďár nad Sázavou 1 | n/a | Manufacture of basic iron and steel and of ferro-alloys | 4 043 | www.zdas.cz |
| ITW Pronovia, s.r.o. | Velká Bíteš | 500 - 999 | Manufacture of plastic components for productive consumption | 3 008 | www.itw-deltar.com |
| nkt cables Velké Meziříčí k.s. | Velké Meziříčí | 250 - 499 | Manufacture of insulated wire and cable | 1500 mil. and more | |
| Hettich ČR, k.s. | Žďár nad Sázavou 1 | 500 - 999 | Manufacture of locks and hinges | 1478 | www.hettich.cz |
| ETC - Energy Trading, s.r.o. | Velké Meziříčí | n/a | Other retail sale in specialized stores | 1288 | |
| První brněnská strojirna Velká Bíteš, | Velká Bíteš | 500 - 999 | Manufacture of pumps and compressors | 1 144 | www.pbsvb.cz |
| Tokoz, a.s. | Žďár nad Sázavou 2 | 500 - 999 | Manufacture of locks and hinges | 881 | www.tokoz.cz |
| Ždar, a.s. | Žďár nad Sázavou 1 | 250 - 499 | Freight transport by road | 835 | www.zdar.cz |
| Titan OIL, s.r.o. | Žďár nad Sázavou 3 | 10 - 19 | Wholesale of solid, liquid and gaseous fuels and related products | 801 | |
| Agro - Měřín, a.s. | Měřín | 500 - 999 | Growing of crops combined with farming of animals (mixed farming) | 691 | www.agro-merin.cz |
| PKS Inpos, a.s. | Žďár nad Sázavou 1 | 250 - 499 | General construction of buildings and civil engineering works | 689 | |
| Labara, s.r.o. | Velká Bíteš - Jindřichov | 50 - 99 | General mechanical engineering | 686 | www.labara.cz |
| Wera Werk, s.r.o. | Bystřice nad Pernštejnem | 250 - 499 | Manufacture of tools | 648 | www.werawerk.cz |
| Jednota, spotřební družstvo Velké | Velké Meziříčí | 250 - 499 | Retail sale in non-specialized stores with food, beverages or tobacco predominating | 521 | www.jednotavelm.cz |
| PBS Turbo, s.r.o. | Velká Bíteš | 100 - 199 | Manufacture of engines and turbines, except aircraft, vehicle and cycle engines | 511 | www.pbsturbo.cz |
| Agro - Měřín, obchodní společnost, s.r. | Měřín | 200 - 249 | Retail sale of automotive fuel | 510 | www.agro-merin.cz |
| NPK Europe Mfg., s.r.o. | Uhřetov | 100 - 199 | Manufacture of metal structures and parts of structures | 500 - 999 mil. | |
| DEL, a.s. | Žďár nad Sázavou 1 | 250 - 499 | Manufacture of electricity distribution and control apparatus | 500 - 999 mil. | www.del.cz |